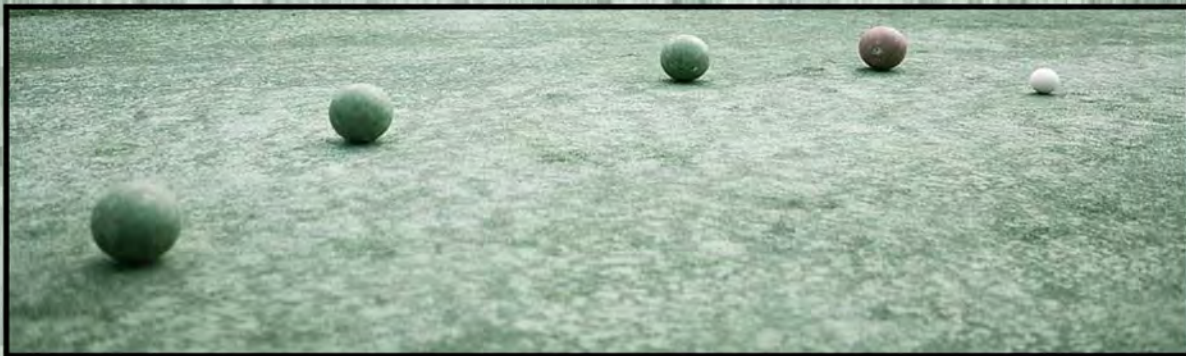
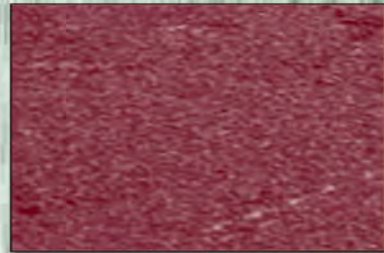
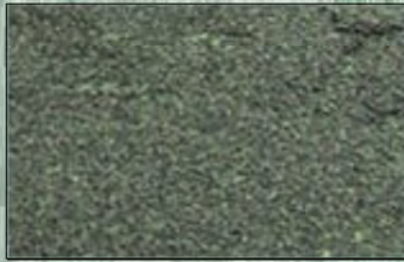


BOCCE COURT SURFACING



YOUR “ONE-STOP” SOURCE FOR AMERICA’S BASEBALL, SOFTBALL & SPORTS SURFACES & SUPPLIES!

PRICES SUBJECT TO CHANGE & AVAILABILITY PLUS SHIPPING | VOLUME DISCOUNTS AVAILABLE | COOPERATIVE PURCHASING CONTRACT PRICING FOR 50 STATES

PARTAC PEAT CORPORATION
ONE KELSEY PARK, GREAT MEADOWS, NEW JERSEY 07838

800-247-BEAM (2326) • (908) 637-4191 • FAX (908) 637-8421
www.beamclay.com • sales@beamclay.com
Bid Term - 5/9/18 - 5/8/20; Extended to 5/8/21; Extended to 5/8/22

BEAM CLAY®

Bocce Courts

Table of Contents

Choosing Your Bocce Court Surface.....3

Constructing & Maintaining a "Fast-Dry" Bocce Court3

Beam Clay® Natural Clay Bocce Court Surfaces4

Bocce Court "Fast-Dry" Clay Surfaces4

Bocce Court Top-Dressings for Natural Clay4

Calcium Chloride4

Magnesium Chloride4

Bocce Court Layout.....5

Constructing & Maintaining a Natural Clay Beam Clay® Bocce Court.....6

Reconditioning or Resurfacing a Natural Clay Beam Clay® Bocce Court.....7

Rubber Curbing8-9

Black "Bounce Board" Rubber.....10

Bocce Court Drag Mats11

Bocce Court Hand Rollers11

Aussie Clean Sweep11

Bocce Court Rakes & Scarifiers12

Bocce Court Brooms13-14

Bocce Court Squeegees15

Litter Pick.....15

Bocce Court Devil.....16

Bocce Court Top-Dresser.....16

Bocce Court Shoe Brushes17

Bocce Turf™ - Synthetic Turf for Bocce Courts18-25

Synthetic Turf—Installing on Concrete26

Synthetic Turf—General Maintenance27

Synthetic Turf—Infill28-31

Synthetic Turf—Cleaners32

Synthetic Turf—Foam Pads32

Synthetic Turf—Tape.....32

Synthetic Turf—Glue32

St.Pierre Bocce Balls.....33-36

YOUR "ONE-STOP" SOURCE FOR AMERICA'S BASEBALL, SOFTBALL & SPORTS SURFACES & SUPPLIES!

PRICES SUBJECT TO CHANGE & AVAILABILITY PLUS SHIPPING | VOLUME DISCOUNTS AVAILABLE | COOPERATIVE PURCHASING CONTRACT PRICING FOR 50 STATES

BEAM CLAY®

Bocce Courts

CHOOSING YOUR BOCCE COURT SURFACE

For very serious bocce players, properly maintained natural clay makes the best playing surface. We make **Beam Clay®** Bocce Court Mix in Red, Orange, Brown, Tan or Grey from natural clays. These install 3" - 4" deep compacted over a firm drainage base. A properly maintained clay court is firm and yet has bounce or "life" to it. However, a clay court takes much work to install and properly maintain.

For those less dedicated to maintaining a bocce court, a stone dust, oyster shell, brick dust or "Fast Dry" court may be preferable as these dry quickly after rain and generally only require a light raking, occasional rolling, and watering. However, stone dust, oyster shell, or brick dust courts are generally softer and indent more easily (and may be too coarse or too dusty) and do not have the "live" feel of a properly maintained clay court.

The option we highly recommend is a "**Fast-Dry**" court. Typically used for tennis court installations, a "**Fast-Dry**" tennis court requires an irrigation system since "**Fast-Dry**" surfaces must be slightly moist to be resilient. However, covering less area, bocce courts can easily be hand watered when needed with a hose. The media refer to these "**Fast-Dry**" courts as "clay" courts; however they are finely crushed green or red aggregates that go thru a heat process with a gypsum binder. When slightly moist, "**Fast-Dry**" surfaces provide a resilient playing surface like natural clay at optimal conditions but are much easier to install and maintain. These install 1" deep compacted over a firm drainage base.

If you want even less maintenance, we also offer **Artificial Turf for Bocce Courts** (pages 16–22) which can be glued to a concrete or asphalt base or loose laid over a compacted aggregate base.

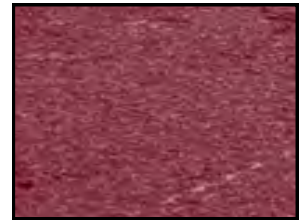
CONSTRUCTING & MAINTAINING A BEAM CLAY® NATURAL CLAY BOCCE COURT

Please see pages 3 - 5.

CONSTRUCTING & MAINTAINING A "FAST-DRY" BOCCE COURT

FAST-DRY BOCCE COURT SURFACING comes in 80 lb. bags in **Green** (Grayish Green) or **Red** (Burgundy Red) and only needs to be installed 1-1/4" thick (which compacts to 1" thick) over a firm drainage base of 3/4" minus or 3/8" minus crushed stone (with fines so that it compacts to a firm base yet drains well) covered by 1/2" of stone screenings. Do not use all one size "clean" stone which will not provide a firm enough base and will allow the playing surface to gradually sink into the voids. If you do use "clean" stone, cover with a geotextile fabric to prevent the surface material from sinking into the voids. With a geotextile fabric you can eliminate the 1/2" of stone dust layer. To install **Fast-Dry Bocce Court Surfacing**: spread, screed or rake level, thoroughly moisten, roll with a hand roller filled with water and broom smooth. Ready for play. Be sure to install "weep holes" in your frame at the court surface to allow excess water to drain off quickly.

To maintain **Fast-Dry Bocce Court Surfacing**: moisten, roll, rake or broom when needed. Each spring (in northern climates) or once a year (in southern climates), lightly scarify surface (1/4" - 1/2" deep) to keep surface well blended. If necessary, add 400 lbs. of Fast-Dry Bocce Court Surfacing per 1,000 s.f. to freshen court surface. Then same as before: screed, drag, or rake level, uniformly moisten, roll with hand roller filled with water and broom smooth. Ready for play.



YOUR "ONE-STOP" SOURCE FOR AMERICA'S BASEBALL, SOFTBALL & SPORTS SURFACES & SUPPLIES!

PRICES SUBJECT TO CHANGE & AVAILABILITY PLUS SHIPPING | VOLUME DISCOUNTS AVAILABLE | COOPERATIVE PURCHASING CONTRACT PRICING FOR 50 STATES

PARTAC PEAT CORPORATION
ONE KELSEY PARK, GREAT MEADOWS, NEW JERSEY 07838

800-247-BEAM (2326) • (908) 637-4191 • FAX (908) 637-8421
www.beamclay.com • sales@beamclay.com
Bid Term - 5/9/18 - 5/8/20; Extended to 5/8/21; Extended to 5/8/22

BEAM CLAY®

WHOLESALE PRICE LIST EFFECTIVE: MAY 24, 2021

Bocce Court Surfaces

BOCCE COURT SURFACES

BEAM CLAY® FOR NATURAL CLAY BOCCE COURTS

New Construction: 4" recommended; approx. 4 tons per 1" compacted 1,000 sq. ft. Up to 50 (50 lb.) bags per pallet. F.O.B. NJ

		<u>BULK PER TON</u>	<u>50 lb. PER BAG</u>
#BC-R-XF-BU/BG	Bocce Court Clay - Red (Extra Firm)	\$135	\$10.50
#BC-0-XF-BU/BG	- Orange (Extra Firm)	\$125	\$9.50
#BC-B-XF-BU/BG	- Brown (Extra Firm)	\$125	\$9.50
#BC-G-MF-BU/BG	- Grey (Medium Firm)	\$115	\$7.50
#BC-T-MF-BU/BG	- Tan (Medium Firm)	\$115	\$7.50
#BC-O-MF-BU/BG	- Orange (Medium Firm)	\$125	\$9.50
#RSTD-BU/BG	Red Slate Top-Dressing	50 (50 lb.) bags/pallet	\$125
#RDBD-BU/BG	Red Brick Dust Top-Dressing	50 (50 lb.) bags/pallet	\$165
#LAVADUST-CYB	Red Lava Dust Top-Dressing	1.5 CY bulk bags, FOB CA	\$250/Bulk Bag
#MAG-FLAKES	Magnesium Chloride Flakes	50 (50 lb. bags)/pallet	—
#MAG-PELLETS	Magnesium Chloride Pellets	48 (50 lb. bags)/pallet	—
#CC-FLAKES	Calcium Chloride Flakes	55 (50 lb. bags)/pallet	—
#CC-PELLETS	Calcium Chloride Pellets	55 (50 lb. bags)/pallet	—

FULL OR PARTIAL PALLETS: PALLET & COVER CHARGES: \$6.50/PALLET

MIDWEST & SOUTH NATURAL BOCCE COURT CLAY

#MW-RB-BB Extra Firm Red/Brown - one ton bulk bags, from regional plants

\$325/Bulk Bag

—

WEST COAST NATURAL BOCCE COURT CLAY

#WC-RB-BB Extra Firm Red- one ton bulk bags, from regional plants

\$265/Bulk Bag

—

POLYMERIZED CLAY—No water used to install or maintain—repels water yet stays firm & resilient Extra Firm Red/Brown, up to 40 (50 lb.) bags/pallet.

#HT-AZ-BG - from AZ
#HT-NJ-BG - from NJ

—

—

\$18.50

\$28.50

POLYMERIZED TOP-DRESSING—one ton bulk bag.

#HT-TD-AZ-BG - from AZ
#HT-TD-NJ-BG - from NJ

—

—

\$365/BB

\$725/BB

BOCCE COURT FAST-DRY CLAY SURFACES

1,000 sq.ft.: 139 (80 lb.) bags or 223 (50 lb.) bags = 1¼" loose per court = 1" compacted per court. Full pallets only from plants; any quantity from NJ.

PLEASE NOTE: Pricing includes cost of pallet and shrink wrap, or pallet and bulk bag. Add \$6.50 for partial pallets from NJ.

		<u>PER BAG F.O.B., PLANT</u>	<u>PER BAG F.O.B., NJ</u>
#TCMHT8014-VA/NJ	HAR-TRU® (VA)- Green 35 (80 lb. bags)/pallet	\$9.50	\$13.45
#TCMHT5014-VA/NJ	- Green 56 (50 lb. bags)/pallet	\$6.44	\$8.95
#TCMHT2000-VA/NJ	- Green 2,000 lb. Bulk Bags	\$279.85	\$385
#TCMHT2500-VA/NJ	- Green 2,500 lb. Bulk Bags	\$332.05	\$455
#TCMHT2800-VA/NJ	- Green 2,800 lb. Bulk Bags	\$353.80	\$495
#SOLMAGTCM	- Magnesium Chloride Flakes - 48 (50 lb. bags)/pallet	\$25	—
#SOLCALTCM	- Calcium Chloride Flakes - 48 (50 lb. bags)/pallet	\$25	—
#NE-G80-VT/NJ	NORTHEAST® (VT) - Green 35 (80 lb. bags)/pallet	\$6.95	\$9.75
#NE-G50-VT/NJ	- Green 48 (50 lb. bags)/pallet	\$4.75	\$6.50
#NE-GBB-VT/NJ	- Green 2,000 lb. Bulk Bags	\$195	\$265
#NE-R80-VT/NJ	- Red 35 (80 lb. bags)/pallet	\$9.25	\$12.05
#NE-RBB-VT/NJ	- Red 2,000 lb. Bulk Bag	\$245/T	\$315/T
#NE-MAGFLK-VT	- Magnesium Chloride Flakes 48 (50 lb. bags)/pallet	\$19.50	—

YOUR "ONE-STOP" SOURCE FOR AMERICA'S BASEBALL, SOFTBALL & SPORTS SURFACES & SUPPLIES!

PRICES SUBJECT TO CHANGE & AVAILABILITY PLUS SHIPPING | VOLUME DISCOUNTS AVAILABLE | COOPERATIVE PURCHASING CONTRACT PRICING FOR 50 STATES

BEAM CLAY®

Bocce Courts

BOCCE BALL COURT LAYOUT

RECOMMENDED AREA

Ground space is 1,824 square feet to 2,816 square feet.

SIZE AND DIMENSION

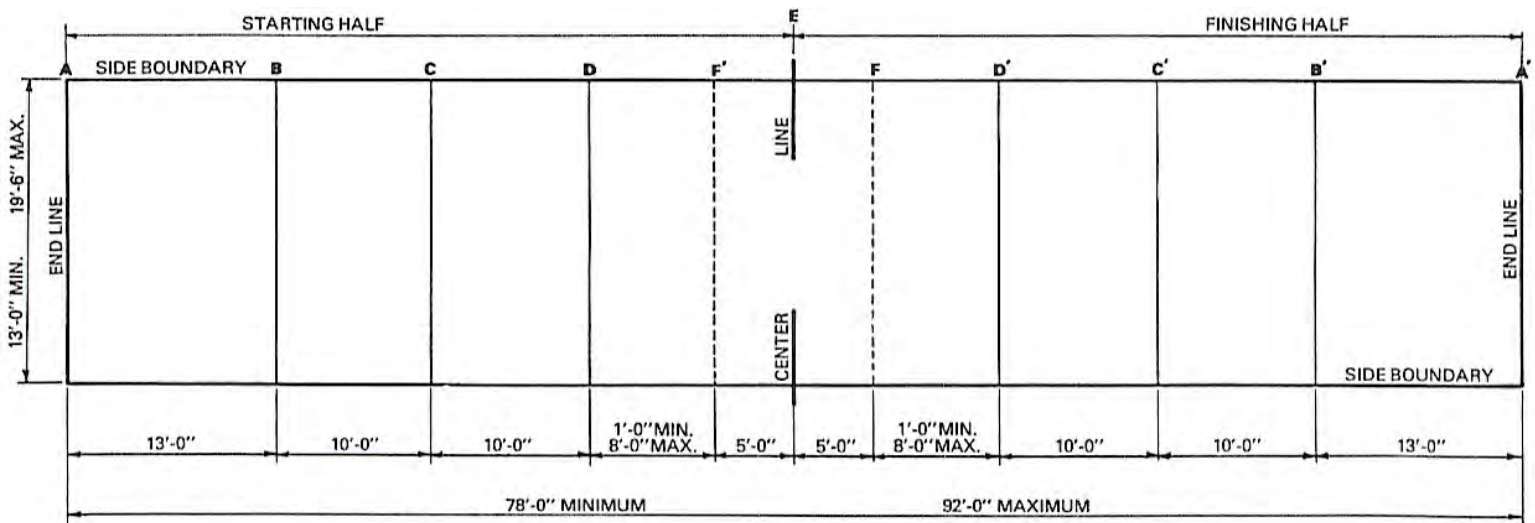
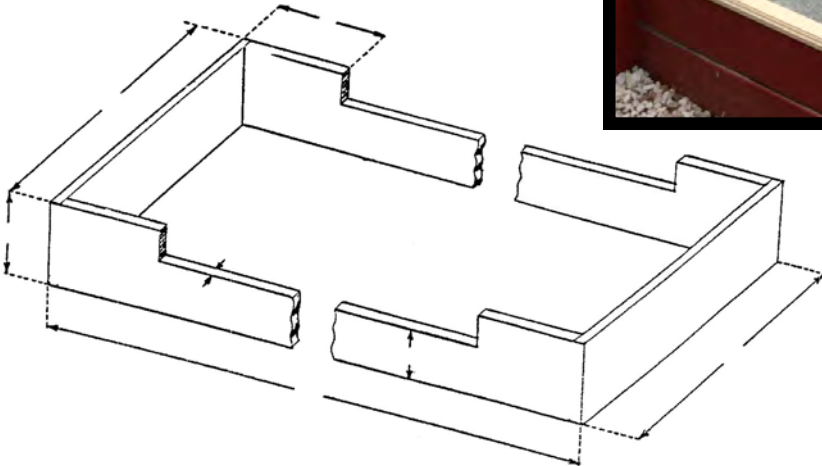
Overall court dimensions are 13'-0" to 19'-6" W by 78'-0" to 92'-0" L, although residential courts are often 10' x 60' or smaller. Additional space of at least 3'-0" on each side and 9'-0" on each end is recommended.

ORIENTATION

Preferred orientation is for the long axis to be north-south although it is of minor importance.

SPECIAL CONSIDERATIONS

Optional low wooden barrier should be provided at each end and/or side of court.



COURT LAYOUT

YOUR "ONE-STOP" SOURCE FOR AMERICA'S BASEBALL, SOFTBALL & SPORTS SURFACES & SUPPLIES!

PRICES SUBJECT TO CHANGE & AVAILABILITY PLUS SHIPPING | VOLUME DISCOUNTS AVAILABLE | COOPERATIVE PURCHASING CONTRACT PRICING FOR 50 STATES

PARTAC PEAT CORPORATION
 ONE KELSEY PARK, GREAT MEADOWS, NEW JERSEY 07838

800-247-BEAM (2326) • (908) 637-4191 • FAX (908) 637-8421
 www.beamclay.com • sales@beamclay.com
 Bid Term - 5/9/18 - 5/8/20; Extended to 5/8/21; Extended to 5/8/22

BEAM CLAY®**Bocce Courts****RECOMMENDATIONS FOR CONSTRUCTING & MAINTAINING
A BEAM CLAY® - NATURAL CLAY BOCCE COURT**

1. Make frame of 2 x 8's on bottom with additional 2 x 6's on ends.
2. Place entire frame on a level drainage bed of 3/8" minus or 3/4" minus stone (with fines so that it compacts firmly yet drains) a minimum of 3" deep compacted depending on site conditions. Drainage bed should be larger than frame by at least one foot all around and have a drainage outlet if native ground drains poorly. **IMPORTANT** - Apply stone first with frame on top.
3. Apply 1/2" layer of stone dust over drainage base within frame.
4. Apply 3-4" of **BEAM CLAY® - Bocce Court Mix** and screed to a uniform grade. It is generally best to construct a wood screed to pull across a level frame to maintain even grade. A Z-shaped screed of 2 x 4's or a rigid metal drag mat are also useful tools for leveling surfaces.
5. After a natural wetting by rain, check for low spots; fill with **BEAM CLAY® - Bocce Court Mix**; thoroughly saturate filled low spots. Remember to drill drainage holes in frame at court surface to allow for surface drainage.
6. When court has dried to sufficient moisture content, compact with water-filled roller, hand tamper or vibratory compactor. After drying further, surface will crack and continue to crack until sufficiently compacted. After another wetting by rain and drying to proper moisture content, rework surface as above.
7. PLEASE NOTE: Clay courts will crack at first and must be rolled and broomed until cracks get smaller and smaller and disappear. A clay court that cracks the first year will in later years have a long useful life; but a court that doesn't crack at first is too sandy, will wear out prematurely, and will require more maintenance in later years.
8. Once cracking becomes sufficiently small (hair-line cracks) apply approximately 200 lbs. of top-dressing and thoroughly broom. If top-dressing is applied too soon, it will fill the cracks but (by working into the clay) shorten the long-term life of the court.
9. After applying and brooming top-dressing, apply 50 lbs. of calcium chloride. After approximately 12 hours, re-broom and roll court. Ready for play.
10. After rain, re-broom and roll court when surface has dried. Reapply top-dressing and calcium chloride as needed.
11. For northern climates, in the fall, we suggest removing top-dressing from court. This will protect your **BEAM CLAY®** surface from being diminished by blending in of top-dressing. In the spring, scarify and smooth court surface, then reapply top-dressing.

RECOMMENDATIONS FOR RESURFACING EXISTING BOCCE COURTS WITH BEAM CLAY®

If resurfacing an existing clay bocce court, remove top-dressing from clay surface, scarify surface approximately 1/2" in depth, and work in 1"+ **BEAM CLAY® - Bocce Court Mix**, then follow above recommendations.

Remember to drill drainage holes in frame at court surface to allow for surface drainage.

YOUR "ONE-STOP" SOURCE FOR AMERICA'S BASEBALL, SOFTBALL & SPORTS SURFACES & SUPPLIES!

PRICES SUBJECT TO CHANGE & AVAILABILITY PLUS SHIPPING | VOLUME DISCOUNTS AVAILABLE | COOPERATIVE PURCHASING CONTRACT PRICING FOR 50 STATES

BEAM CLAY®**Bocce Courts****RECOMMENDATIONS FOR RECONDITIONING NATURAL CLAY
BOCCE COURTS AFTER WINTER SEASON**

1. Sweep or blow top-dressing from court.
2. Scarify court with drag mat. Then thoroughly broom.
3. After natural wetting by rain, check for low spots; fill with **BEAM CLAY® - Bocce Court Mix**, working into the existing surface for good bonding. Thoroughly saturate filled areas.
4. Apply approximately 200 lbs. of top-dressing, while court is still damp. Broom in both directions.
5. Apply 50 lbs. of calcium chloride (flakes). After calcium chloride thoroughly dissolves and court reaches proper moisture content (12 to 24 hours), court should be re-broomed and compacted (rolled). Ready for play.
6. After rain, re-broom and roll court when surface has dried. Apply top-dressing and calcium chloride as need during season. Normally, 3-4 applications are sufficient for season.

RECOMMENDATIONS FOR RESURFACING NATURAL CLAY BOCCE COURTS

1. Sweep or blow top-dressing from court.
2. Scarify court approximately 1/2" in depth.
3. Apply 1"+ of **BEAM CLAY® - Bocce Court Mix**.
4. Re-scarify to blend **BEAM CLAY®** with existing surface. Then drag mat entire court.
5. After a natural wetting by rain, check for low spots; fill with **BEAM CLAY® - Bocce Court Mix**. Thoroughly saturate filled areas.
6. When court has dried to sufficient moisture content, compact with water-filled roller, hand tamper or vibratory compactor.
7. **PLEASE NOTE:** Clay courts will crack at first and must be rolled and broomed until cracks get smaller and smaller and disappear. A clay court that cracks the first year will in later years have a long useful life; but a court that doesn't crack at first is too sandy, will wear out prematurely, and will require more maintenance in later years.
8. Rework surface as above, until cracking becomes sufficiently small (hair-line cracks) apply approximately 200 lbs. of top-dressing and thoroughly broom, If top-dressing is applied too soon, it will fill the cracks but (by working into the clay) shorten the long-term life of the court.
9. After applying and brooming top-dressing, apply 50 lbs. of calcium chloride (flakes). After calcium chloride thoroughly dissolves and court reaches proper moisture content (12 to 24 hours), court should be re-broomed and rolled. Ready for play.
10. After rain, re-broom and roll court when surface has dried. Apply top-dressing and calcium chloride as needed during season. Normally, 3-4 applications are sufficient for season.

YOUR “ONE-STOP” SOURCE FOR AMERICA’S BASEBALL, SOFTBALL & SPORTS SURFACES & SUPPLIES!

PRICES SUBJECT TO CHANGE & AVAILABILITY PLUS SHIPPING | VOLUME DISCOUNTS AVAILABLE | COOPERATIVE PURCHASING CONTRACT PRICING FOR 50 STATES

BEAM CLAY®

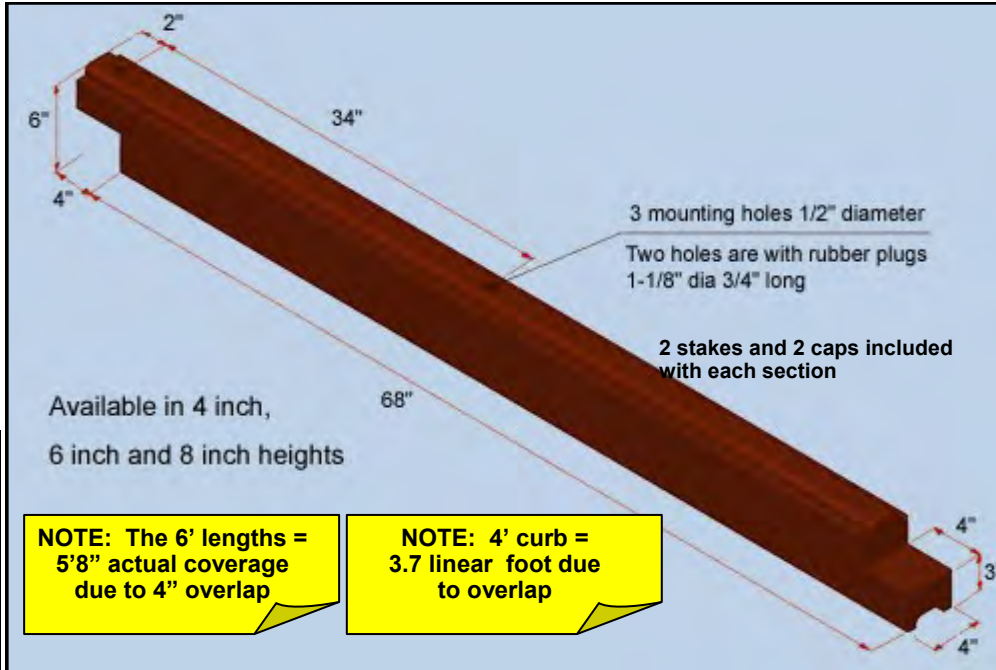
WHOLESALE PRICE LIST
 EFFECTIVE: JANUARY 1, 2021

Bocce Court Surfaces: Rubber Curbing

RUBBER CURBING

		PER PIECE
4" High x 4" Wide x 6' Long (30 lbs./piece, up to 99 pieces/pallet)	#RC-4X4X6	\$35
6" High x 4" Wide x 6' Long (45 lbs./piece, up to 63 pieces/pallet)	#RC-6X4X6	\$65
8" High x 4" Wide x 6' Long (70 lbs./piece, up to 45 pieces/pallet)	#RC-8X4X6	\$80
4" High x 3" Wide x 6' Long (20 lbs./piece, up to 100 pieces/pallet)	#RC-4X3X6	\$30
4" High x 3" Wide x 4' Long (13 lbs./piece, up to 140 pieces/pallet)	#RC-4X3X4	\$20

Please note: The 4" wide sections are grooved and can be stacked to create desired height. However, the 3" W is not stackable. 3" W lengths of curbing are not grooved for stacking.



- More resilient than wood
- No warping or discoloring
- No splinters
- Non toxic
- Will not rot
- Stackable
- Interlocking
- Available in 4 ft lengths and 4" or 6 ft lengths and 4", 6" and 8" heights

- No CCA or other harmful chemicals
- Easy to install with pre drilled holes
- Made from 100% recycled tires
- Flexible with rounded edges
- Will not breed ticks, termites or other insects
- Maintenance free
- Hardware & Caps included
- Neutral brown tone-compatible with any surface color

2 stakes and 2 caps are included with each curb

natural brown bendable stackable interlocking hardware included

YOUR "ONE-STOP" SOURCE FOR AMERICA'S BASEBALL, SOFTBALL & SPORTS SURFACES & SUPPLIES!

PRICES SUBJECT TO CHANGE & AVAILABILITY PLUS SHIPPING | VOLUME DISCOUNTS AVAILABLE | COOPERATIVE PURCHASING CONTRACT PRICING FOR 50 STATES

BEAM CLAY®

Bocce Court Surfaces: Rubber Curbing

**Rubber Curbing
For Bocce Courts****Product Specifications****Product Description:**

1. Material: compression molded composite of the 100% recycled rubber and polyurethane prepolymer
2. Physical properties of the rubber composite:
 - a) Density 0.6 oz/cu in (ASTM C642)
 - b) Durometer Hardness 65A ± 7 (ASTM D2240)
 - c) Tensile Strength* minimum 125 psi (ASTM D412)
(* main structural areas)
 - d) Compression deformation 10% at 70psi, 68°F (ASTM D575)
 - e) Brittleness at Low temperature: -40°F (ASTM D746)
 - f) Freeze and thaw when exposed (ASTM C672)
to deicing chemicals no loss after 50 cycles
 - g) Coefficient of thermal expansion: 8 x10⁻⁵ in/in/°F (ASTM C531)
 - h) Weathering 70 hours at 158°F (ASTM D573)
 - hardness retained 100% (± 5%)
 - compressive strength 100% (± 5%)
 - tensile strength 100% (± 5%)
 - elongation retained 100% (± 5%)
3. Available models:
 - a) 4"W x 4"H x 72"L with weight of 30 lbs.
 - b) 4"W x 6"H x 72"L with weight of 45 lbs.
 - c) 4"W x 8"H x 72"L with weight of 70 lbs.
 - d) 3"W x 4"H x 72"L with weight of 20 lbs.
 - e) 3"W x 4"H x 48"L with weight of 13 lbs.
4. Finishing color: dark brown

Installation methods:

- a) with 2 spikes 18" long x 3/8" diameter provided for each 4" high piece
- b) with 2 spikes 24" long x 3/8" diameter provided for each 6" high or 8" high piece

Note: The mounting holes can be closed after installation with the rubber plugs 1-1/8 diameter and 3/4" long, supplied with the product.

Components:

- a) 100% recycled rubber from car and truck tires (NR, SBR)
- b) polyurethane prepolymer for rubber granules
- c) brown pigment

YOUR "ONE-STOP" SOURCE FOR AMERICA'S BASEBALL, SOFTBALL & SPORTS SURFACES & SUPPLIES!

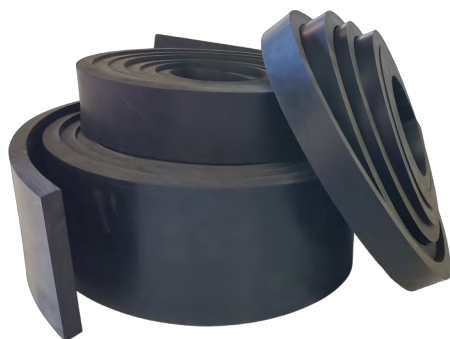
PRICES SUBJECT TO CHANGE & AVAILABILITY PLUS SHIPPING | VOLUME DISCOUNTS AVAILABLE | COOPERATIVE PURCHASING CONTRACT PRICING FOR 50 STATES

BEAM CLAY®

Black Bounce Board Rubber

WHOLESALE PRICE LIST
 EFFECTIVE: MAY 21, 2021

Black "Bounce Board" Rubber



Physical Properties

ASTM D 412	
TENSILE	2400 psi (15.9 MPa) minimum
Modulus @ 100%	500 psi (typical)
Modulus @ 200%	900 psi (typical)
Modulus @ 300%	1200 psi (typical)
Elongation @ Break	450 % minimum
ASTM D2240: Hardness	60 ± 5 Durometer (Shore A)
ASTM D 624: Tear Resistance (Die C)	229 ppi (lbs per inch) minimum
ASTM D 297: Density / Specific Gravity	1.135 typical

	Size	Approx. Weight	Price Per LF
#BB38X4	3/8" x 4"	3 lbs./LF	\$3.15/LF
#BB12X4	1/2" x 4"	4 lbs./LF	\$4.15/LF
#BB38X6	3/8" x 6"	4.5 lbs./LF	\$4.75/LF
#BB12X6	1/2" x 6"	6 lbs./LF	\$6.35/LF
#BB38X8	3/8" x 8"	6 lbs./LF	\$6.35/LF
#BB12X8	1/2" x 8"	8 lbs./LF	\$8.45/LF
#BB38X10	3/8" x 10"	7.5 lbs./LF	\$7.85/LF
#BB12X10	1/2" x 10"	11 lbs./LF	\$10.50/LF
#BB38X12	3/8" x 12"	9 lbs./LF	\$9.50/LF
#BB12X12	1/2" x 12"	12 lbs./LF	\$12.60/LF

YOUR "ONE-STOP" SOURCE FOR AMERICA'S BASEBALL, SOFTBALL & SPORTS SURFACES & SUPPLIES!

PRICES SUBJECT TO CHANGE & AVAILABILITY PLUS SHIPPING | VOLUME DISCOUNTS AVAILABLE | COOPERATIVE PURCHASING CONTRACT PRICING FOR 50 STATES

BEAM CLAY®

WHOLESALE PRICE LIST
 EFFECTIVE: APRIL 23, 2021

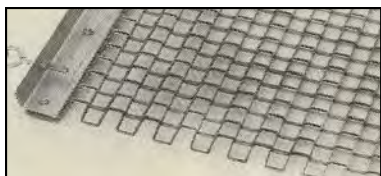
Bocce Court Grooming Tools—Drag Mats, Rollers, Clean Sweep

BOCCE COURT DRAG MATS—FOR NATURAL CLAY COURTS

(Rigid with cutting lip on one side, up for smoothing, down for leveling)

3' Wide x 3½' Long (27 lbs.)	RDM-3X3.5	\$175
4' Wide x 3½' Long (36 lbs.)	RDM-4X3.5	\$205
5' Wide x 3½' Long (45 lbs.)	RDM-5X3.5	\$245
6' Wide x 3½' Long (54 lbs.)	RDM-6X3.5	\$295

See Catalog 103: Infield Grooming Equipment for more details & sizes.

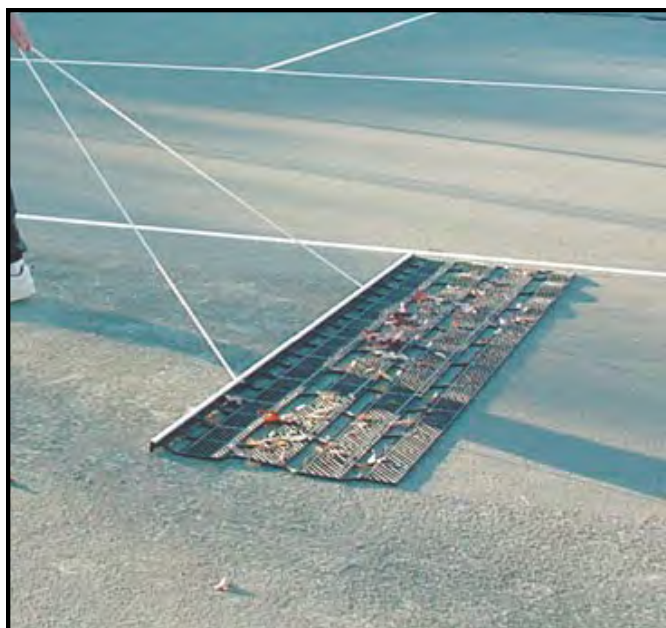


HAND ROLLER

18" Diameter x 24" Wide, 14 gauge (1/12") all steel design, bronze bushings, fill with water to create desired weight. Ships in two pieces, minor assembly required. Wt. 45 lbs. (empty), 200 lbs. (full).

#85750

\$325



AUSSIE CLEAN SWEEP

This unique combination tool from Australia help pick up and remove leaves, pine needles, stones, and other debris found on your court while grooming the court like a drag brush. The PVC tines lift the debris and flip it on top of the unit so it can be carried off the court. Available in 4' and 8' widths.

AUS8	8' Model	\$499
AUS4	4' Model	\$333

YOUR "ONE-STOP" SOURCE FOR AMERICA'S BASEBALL, SOFTBALL & SPORTS SURFACES & SUPPLIES!

PRICES SUBJECT TO CHANGE & AVAILABILITY PLUS SHIPPING | VOLUME DISCOUNTS AVAILABLE | COOPERATIVE PURCHASING CONTRACT PRICING FOR 50 STATES

BEAM CLAY®

WHOLESALE PRICE LIST EFFECTIVE: APRIL 23, 2021

Bocce Court Grooming Tools—Rakes/Scarifiers

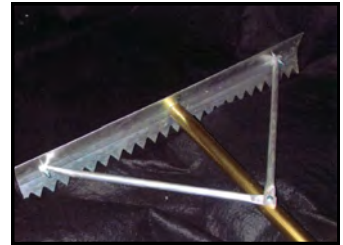
YANKEE®/NEW ENGLAND ALUMINUM RAKES

Light Yet Sturdy With 66" Powder Coated Gold Handles (84" Handles Available with 6" Vinyl Grips). Side Braces Bolt Through Top of Handles. F.O.B. NJ or CT

YANKEE® BOCCE COURT SCARIFIER/T-LUTES

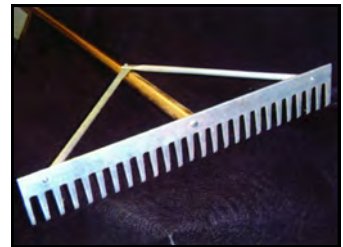
One Side Smooth Edge, One Side Serrated Toothed Edge, especially recommended for Fast-Dry Courts.

0624T	24" Blade (3 lbs.)	\$59.95
0630T	30" Blade (3 lbs.)	\$61.95
0636T	36" Blade (4 lbs.)	\$62.95
0642T	42" Blade (4 lbs.)	\$71.95
0648T	48" Blade (4 lbs.)	\$74.95



YANKEE® STRAIGHT TOOTH RAKES WITH STRAIGHT EDGES

0914	14" Blade (3 lbs.)	\$45.95
0924	24" Blade (3 lbs.)	\$60.95
0930	30" Blade (3 lbs.)	\$63.95
0936	36" Blade (4 lbs.)	\$67.95
0942	42" Blade (5 lbs.)	\$75.95
0948	48" Blade (5 lbs.)	\$79.95



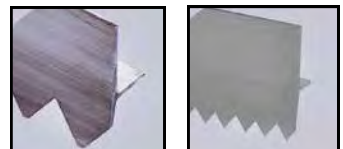
YAN-HANDLE	84" Long Handle for Any Rake	\$9.90
YAN-DB	Double Braces for 42" or 48" Rakes	\$15



MIDWEST™ SPECIALTY TOOLS

BOCCE COURT SCARIFIER/LUTE - One side serrated teeth, one side straight edge - Its saw-tooth design makes this tool an excellent choice. For scarifying and leveling natural clay or fast-dry clay courts. Wrap-around bracing and a 1-1/8" diameter powder-coated aluminum handles with 5" vinyl grip provide maximum strength and comfort.

Larger Teeth, 66" Handle		82" Handle	
56923	24" Blade \$52.95	56924	24" Blade \$57.95
56929	30" Blade \$55.95	56930	30" Blade \$60.95
56935	36" Blade \$58.95	56936	36" Blade \$64.95
Finer Teeth			
52936	36" Blade \$60.95	52037	36" Blade, \$66.95
		52038	36" Blade, 1-3/8" dia. handle \$67.95



BOCCE COURT RAKE

Straight, Rounded Teeth with Extended Straight Edge Specifically Designed for Grading and Leveling.

12024	24" Blade, 5 lbs.	\$64.95
12030	30" Blade, 5 lbs.	\$68.95
12036	36" Blade, 6 lbs.	\$70.95
12042	42" Blade, 6 lbs.	\$77.95
12048	48" Blade, 6 lbs.	\$82.95



LEE™ SCARIFIER/T-LUTES

Two tools in one – made of all-aluminum for scarifying, leveling and removing loose granules. It is strong and sturdy, yet light enough to use all day and excellent for spreading new material during top-dressing. The concave shape of the blade allows the tool to "float" along the surface, without grabbing or digging in.

SCR04	30", 5 lbs.	\$70
SCR05	48", 6 lbs.	\$79



YOUR "ONE-STOP" SOURCE FOR AMERICA'S BASEBALL, SOFTBALL & SPORTS SURFACES & SUPPLIES!

PRICES SUBJECT TO CHANGE & AVAILABILITY PLUS SHIPPING | VOLUME DISCOUNTS AVAILABLE | COOPERATIVE PURCHASING CONTRACT PRICING FOR 50 STATES

BEAM CLAY®

WHOLESALE PRICE LIST
 EFFECTIVE: JANUARY 1, 2021

Bocce Court Grooming Tools—Brooms

7' WIDE MAHOGANY BOCCE COURT BROOM **WITH 3 ROWS OF 7" FIBER BRISTLES & 2 STEEL HANDLES**

This is the traditional court broom made the same way for over 75 years. The solid mahogany block is aesthetically pleasing and unaffected by water and severe temperature changes. Three full rows of 7" long bassine fiber absorb moisture and help dry the court. Two heavy gauge steel handles are included. The handles are reversible to prolong broom life. The broom provides an even sweep 7' wide.

#311-7



\$395

7' WIDE ALUMINUM BOCCE COURT BROOM **WITH 3 ROWS OF 5-1/2" GREEN POLYPRO BRISTLES** **& TWO 4' ALUMINUM HANDLES WITH 20" CROSS PIECE**

This is the ultimate bocce court broom. The aluminum back brush is "dynamically weighted" to provide a one time pass 7' wide. It is the fullest brush on the market with 3 rows stiff polypropylene bristles 5.5" long epoxy set into the aluminum block. Bristles are inert to the elements. The broom is sold complete with two 4' aluminum handles joined by a 20" PVC cross piece. The handles are reversible for added broom life. The broom can be flipped over and used as a scraper. Two hooks are provided for hanging up.

#411-7



\$450

YOUR "ONE-STOP" SOURCE FOR AMERICA'S BASEBALL, SOFTBALL & SPORTS SURFACES & SUPPLIES!

PRICES SUBJECT TO CHANGE & AVAILABILITY PLUS SHIPPING | VOLUME DISCOUNTS AVAILABLE | COOPERATIVE PURCHASING CONTRACT PRICING FOR 50 STATES

BEAM CLAY®

WHOLESALE PRICE LIST EFFECTIVE: APRIL 23, 2021

Bocce Court Grooming Tools - Brooms

MIDWEST™ 7' WIDE MONSTER BROOM

Heavy-duty aluminum construction. Available with two or three rows of 4-1/2" bristles. Bristles are removable for easy replacement or for adjusting the broom's stiffness.

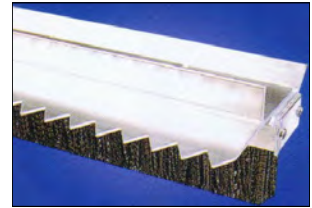
#82084	Monster Drag Broom (Two-Row Bristles)	\$198.95
#83084	Monster Drag Broom (Three-Row Bristles)	\$230.95
#SP50067	7' Replacement Bristles (One Row)	\$42.95



BOCCE COURT SCARIFIER BROOM

Identical to the two-row Monster Broom, except with scarifying edge.

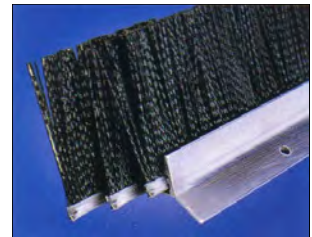
#82384	7' Scarifier Broom (Two-Row Bristles)	\$252.95
#SP50067	7' Replacement Bristles (One Row)	\$42.95



MIDWEST™ 28" MAXIMUM-DUTY BROOM

Made from the same heavy-duty extrusion as the 7' Monster Broom, this broom is one of the heaviest built brooms on the market. By flipping the broom over, you have a scraping edge. The 28" head is available with two-row or three-row bristles. Available with the innovative 60" bent powder-coated aluminum handle, excellent for eliminating back strain. Bristles are removable for easy replacement or for adjusting the broom's stiffness.

#82928	28" Maximum-Duty Broom (Two-Row Bristles)	\$78.95
#83928	28" Maximum-Duty Broom (Three-Row Bristles)	\$88.95
#SP50068	28" Replacement Bristles (One Row)	\$12.95



28" SCARIFIER BROOM

With scarifying edge.

#82328	28" Scarifier Broom (Two-Row Bristles)	\$110.95
#SP50068	28" Replacement Bristles (One Row)	\$12.95



24" GENERAL-PURPOSE BROOM

This 24" general-purpose broom is an excellent choice for the garage or shop, and is also used for base path and infield dressing. Professional grounds keepers flip the broom over for a final dressing of base paths. Available with either a 60" ergonomic bent powder-coated aluminum handle or a 60" straight powder-coated aluminum handle.

#82924	24" General-Purpose Broom, Bent Handle	\$61.95
#82925	24" General-Purpose Broom, Straight Handle	\$61.95



YOUR "ONE-STOP" SOURCE FOR AMERICA'S BASEBALL, SOFTBALL & SPORTS SURFACES & SUPPLIES!

PRICES SUBJECT TO CHANGE & AVAILABILITY PLUS SHIPPING | VOLUME DISCOUNTS AVAILABLE | COOPERATIVE PURCHASING CONTRACT PRICING FOR 50 STATES

BEAM CLAY®

WHOLESALE PRICE LIST
EFFECTIVE: APRIL 23, 2021

Bocce Court Grooming Tools - Squeegees

MIDWEST™ ROLLER SQUEEGEES

These roller squeegees are built to outlast and outperform other brands. The heavy-duty aluminum frame construction and stainless steel axles ensure the roller stays secure. Two roller styles are available: Non-Absorbent—pushes water; and PVA Absorbent—made of superior high-tech polymer designed to soak up incredible amounts of liquid off hard surfaces. Rollers are easily replaceable and interchangeable.

Non-Absorbent Roller Squeegee

54" Powder Coated Curved Aluminum Handle With 6" Vinyl Grip.

70924	24" Wide, 6 lbs.	\$136.95
70936	36" Wide, 8 lbs.	\$155.95
70948	48" Wide, 10 lbs.	\$174.95

Replacement Rollers

SA10047	24" Non Absorbent, 2 lbs.	\$56.95
SA10048	36" Non Absorbent, 3 lbs.	\$70.95
SA10049	48" Non Absorbent, 4 lbs.	\$84.95

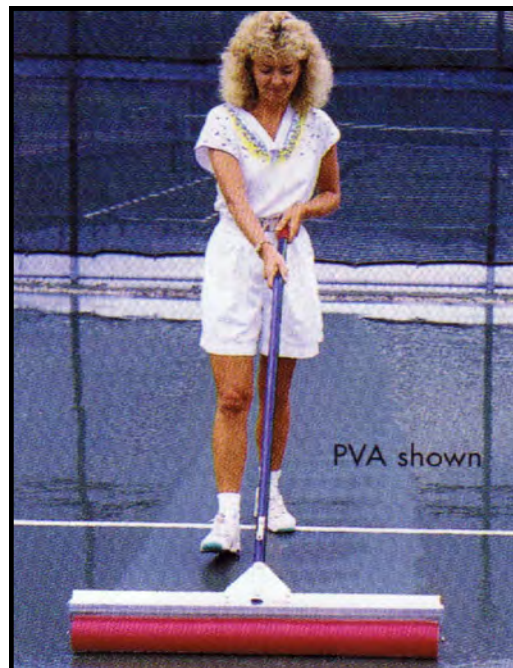
PVA Absorbent

60" Powder Coated Aluminum Handle With Curved Aluminum Handle With 6" Vinyl Grip.

72036	36" Wide, 7 lbs.	\$158.95
--------------	------------------	-----------------

Replacement Rollers

SA10051	36" PVA Absorbent, 3 lbs.	\$75.95
----------------	---------------------------	----------------



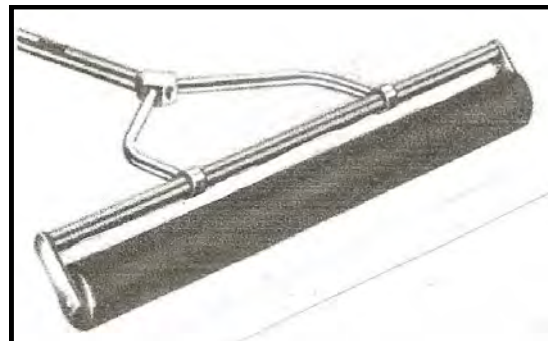
YANKEE® ROLLER SQUEEGEES WITH 48" GOLD ANODIZED HANDLES*

NON-ABSORBANT (BLACK)

0736	36" Wide (6 lbs.)	\$107.50
0748	48" Replacement Roller (3 lbs.)	\$45.00

ABSORBANT (GREY)

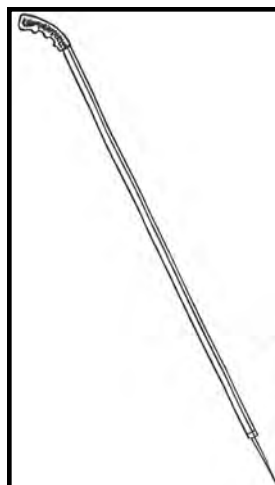
0724A	24" Wide (6 lbs.)	\$104.50
0736A	36" Wide (6 lbs.)	\$114.50
0748A	48" Replacement Roller (3 lbs.)	\$50.00



YANKEE® LITTER PICK

3/4" Tubular Handle with Pistol Grip, 41" Long

0450	\$17.50
Replacement Points for Above	
0402	\$5.95



YOUR "ONE-STOP" SOURCE FOR AMERICA'S BASEBALL, SOFTBALL & SPORTS SURFACES & SUPPLIES!

PRICES SUBJECT TO CHANGE & AVAILABILITY PLUS SHIPPING | VOLUME DISCOUNTS AVAILABLE | COOPERATIVE PURCHASING CONTRACT PRICING FOR 50 STATES

PARTAC PEAT CORPORATION
ONE KELSEY PARK, GREAT MEADOWS, NEW JERSEY 07838

800-247-BEAM (2326) • (908) 637-4191 • FAX (908) 637-8421
www.beamclay.com • sales@beamclay.com
Bid Term - 5/9/18 - 5/8/20; Extended to 5/8/21; Extended to 5/8/22

BEAM CLAY®

Bocce Court Resurfacing/Scarification Tools

WHOLESALE PRICE LIST
 EFFECTIVE: JANUARY 1, 2021

COURT DEVIL SCARIFIERS

Great for loosening & scarifying your bocce court surfaces.

#146-3409 COURT DEVIL —Weight 105 lbs., width 48".

\$1,595

#146-3408 COURT DEVIL JR—Weight 85 lbs., width 16".

\$1,250



TRU-FLOW TOP-DRESSERS

This top-dresser offers unmatched performance in distributing Fast-Dry Bocce Court Surfacing.

Tru-Flow spreaders handle the toughest of conditions. For top-dressing to be effective, it needs to be applied as uniformly as possible. Tru-Flow's unique 8" dispersal drum is encased in expanded metal. Conventional drop spreaders rely on gravity to help release the Fast-Dry from its hopper, but the Tru-Flow pulls the surface out of the hopper and on to the court with unmatched consistency.

24" Hand Spreader holds up to four 80 lb. bags. Simply bolt on the handle and you are ready to start your pre-season renovation.

#124-3069 - 24" Hand Spreader

\$950

#124-3065 - 36" Tow Spreader

\$2,473

#124-3066 - 54" Tow Spreader

\$2,894



YOUR "ONE-STOP" SOURCE FOR AMERICA'S BASEBALL, SOFTBALL & SPORTS SURFACES & SUPPLIES!

PRICES SUBJECT TO CHANGE & AVAILABILITY PLUS SHIPPING | VOLUME DISCOUNTS AVAILABLE | COOPERATIVE PURCHASING CONTRACT PRICING FOR 50 STATES

BEAM CLAY®

Bocce Court Shoe Brushes

WHOLESALE PRICE LIST
EFFECTIVE: JANUARY 1, 2021



BOCCE COURT SHOE BRUSH

Two foam plastic blocks with blue plastic bristles on steel frame with steel scraper bar. Simple & Effective! (6 lbs.)

#4042414

\$69.95

#4042514 - Repl. Brush (two per Cleat Brush) each

\$12.95



THE TREAD BLASTER

The Tread Blaster is uniquely designed to remove dirt and grit from your shoes without getting the tops of your shoes wet. A necessity for all facilities with clay courts. Easy to install, all you need is access to water and a hose with a spigot that provides a pressure of 30 to 60 psi. You'll be happy you made the investment.

147-4000

\$399

TENNIE TWO-STEP

The Tennie Two-Step keeps carpets, players' shoes and walkways cleaner. The Tennie Two-Step is simplicity in itself. It is a UV-resistant polyethylene water-holding basin containing two patented perforated rubber panels designed to force water into the soles of your shoes while you rock back and forth on your feet. The results are noticeable everywhere. Clean shoes mean no more Fast-Dry in the house, on walkways, or in your car. Tennie Two-Step is available in its classic form, or with a newly designed shoe brush attached to the frame for more aggressive cleaning needs. You can also upgrade your existing units by installing a brush. Installation is simple and requires two holes to be drilled and two bolts to be tightened. All the appropriate hardware is included.



SHOTTSWB - Tennie Two-Step with Brush

\$220

SHOTTS - Tennie Two-Step (without Brush)

\$187

SHOTTSBR - Brush attachment

\$50



COURT MAID

Court Maid's powder-coated, all-aluminum frame is designed to be installed at the entrance and exit points of your bocce court for cleaning shoes and trapping clay or Fast-Dry within its collection basin. The brush unit on top lifts off for easy removal of the accumulated Fast-Dry. Simply hose off to clean.

SHOCMJ - Black 14 3/4" x 20" x 4"

\$372.50



HAR-TRU SHOE BRUSH

The Har-Tru "Scrusher" shoe brush can be attached to the sidewalk or left free standing. The softer upper bristles dust off the upper portion of the shoe while the stiffer lower bristles scrape topping from the soles. The base is made of heavy-duty carbon steel. The shoe brush is easily cleaned with a hose or soap and water.

SHOSBR

\$66.50

SHOSBRBB Replacement Bottom Brush

\$7.95

SHOSBRBS Replacement Side Brush (each)

\$20.99

YOUR "ONE-STOP" SOURCE FOR AMERICA'S BASEBALL, SOFTBALL & SPORTS SURFACES & SUPPLIES!

PRICES SUBJECT TO CHANGE & AVAILABILITY PLUS SHIPPING | VOLUME DISCOUNTS AVAILABLE | COOPERATIVE PURCHASING CONTRACT PRICING FOR 50 STATES

BEAM CLAY®

Synthetic Turf for Bocce Courts

WHOLESALE PRICE LIST
EFFECTIVE: JANUARY 1, 2021

BOCCE TURF™ - SYNTHETIC TURF FOR BOCCE COURTS

Can be installed over crushed aggregate base (3/4" minus) or glued to concrete or asphalt. Tape and glue needed for seams, if installing over crushed aggregate. 1/2" of fine stone dust recommended over crushed aggregate base for a smooth compacted surface. Permeable turf not recommended—can cause wash out in base. Perimeter drainage best—weep holes in frame if above ground at surface of turf, perimeter drains if below ground (3/4-1" plastic pipe at both sides of center line or at corners connected to drain will work. Foam backing recommended—helps lessen bounce and helps prevent dimples forming in the aggregate base. Scrim over foam backing recommended for glue down, without scrim over aggregate base (less curling). Turf (over aggregate base) can be nailed to pressure treated 2x4's installed vertically around perimeter and/or a bounce board can be added to frame to hold turf down to prevent edges from curling—up but not so tightly to prevent drainage unless there are weep holes.

Here are some guidelines for choosing turf:

Most Popular - Bocce 25 oz. Nylon and 24 oz. Polypro with shorter and denser fibers and 5mm foam backing are the most popular, followed by 36 oz. Polypro and 36 oz. Nylon.

Bounce - 5mm foam backing gives less bounce. 1mm rubber gives more bounce. Bounce has a lot to do with the face of the turf as well: more turf in the face (greater pile height and density) will cushion the bounce more. Adding round sand will decrease bounce. Adding angular or sub-angular sand will increase bounce.

Speed - 24 oz. Polypro is the fastest surface, followed by 36 oz. Polypro. Speed can be increased by adding either sand and adjusted on any except 24 oz. Polypro, which is too dense and short. Adding up to 2 lbs. sand per square foot allows you to get the speed and bounce you prefer.

Memory - Nylon turf DOES NOT have "memory" Polypropylene does. What this means is if you walk on Polypropylene turf every day for a year or more, eventually it will mat down. It "remembers" being mashed down and eventually doesn't come back up. However, Nylon turf will look the same after each use — it doesn't remember being mashed down and goes back to its original state after each use. However, this come with a price. Nylon is more expensive.

25 oz. NYLON stadium grade artificial turf with 5mm foam backing with or without scrim in Forest Green. No infill. **PL30612W5MM** **\$3.95/sf**
12' Stock Rolls

36 oz. NYLON stadium grade artificial turf with 1mm rubber backing in Forest Green. **PL30815W1MM** **\$3.85/sf**
15' Stock Rolls

48 oz. NYLON stadium grade artificial turf with 1mm rubber backing in Forest Green. **PL30715W1MM** **\$4.35/sf**
15' Stock Rolls

24 oz. POLYPROPYLENE artificial turf with 5mm foam backing with or without scrim - Pine Green. 12' Stock Rolls **PL35712W5MM** **\$3.25/sf**

24 oz. POLYPROPYLENE artificial turf with SilverBack™ Polyurethane, Pine Green. 12' Stock Rolls **PL35712WSB** **\$2.10/sf**

36 oz. POLYPROPYLENE artificial turf. Available in 14 colors.

12' wide, spring green or pine, 5mm foam with scrim **PL70512W5MM** **\$3.75/sf**

12' wide, spring green or pine, SilverBack™ Polyurethane **PL70512WSB** **\$2.75/sf**

15' wide, spring green or pine, 5mm foam with scrim **PL70515W5MM** **\$3.75/sf**

15' wide, spring green, SilverBack™ Polyurethane **PL70515WSB** **\$2.75/sf**

15' wide, pine 1mm rubber **PL70515W1MM** **\$3.25/sf**

12' wide, clay, red, white, blue, orange, yellow, black, or brown, 5mm foam **PL70512WC5MM** **\$4.25/sf**

12' wide, purple, vegas gold, crimson, maroon, or navy, 5mm foam **PL705L12WC5MM** **\$4.25/sf**

12' wide, purple, vegas gold, crimson, maroon, or navy, SilverBack™ Polyurethane **PL705L12WCSB** **\$2.95/sf**

12' wide, clay, red, white, blue, orange, yellow, black, or brown, SilverBack™ Polyurethane **PL70512WCSB** **\$2.95/sf**

42 oz. POLYPROPYLENE artificial turf with 1mm rubber backing. Available in Pine Green or Clay. 15' Stock Rolls **PL70715WC1MM** **\$3.45/sf**

There is no charge to cut the length or reverse rolling, so that each piece will unroll with turf side up. **There is a \$50 per piece cutting charge** to cut the width and/or pre-trimming the scrim & selvage fabric along edge. There is up to 2" extra width per stock roll & typically 6" extra length per cut roll.

Cutting width: There is a 1/4" tolerance. You may be better to cut width on site with a utility knife, especially if there is any variation in width of court.

1 mm rubber backing does not expand or contract as much as other backings and is especially used for loose lay applications. Scrim on foam backing keeps the foam from cracking when stored rolled up in warehouse. Scrim will not curl if gluing down but will curl if installing over crushed aggregate without securing the perimeter. Use foam back with scrim for gluing to concrete or macadam. Use foam without scrim for installing over crushed aggregate unless securing perimeter. If gluing unitary backing, be sure glue is polyurethane compatible. Robert's 6700, NORDOT 34-G, and Turf Claw are polyurethane compatible but always double check the label to be sure.

YOUR "ONE-STOP" SOURCE FOR AMERICA'S BASEBALL, SOFTBALL & SPORTS SURFACES & SUPPLIES!

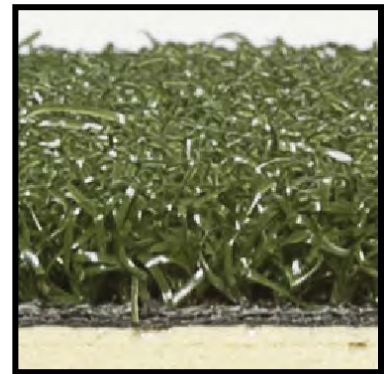
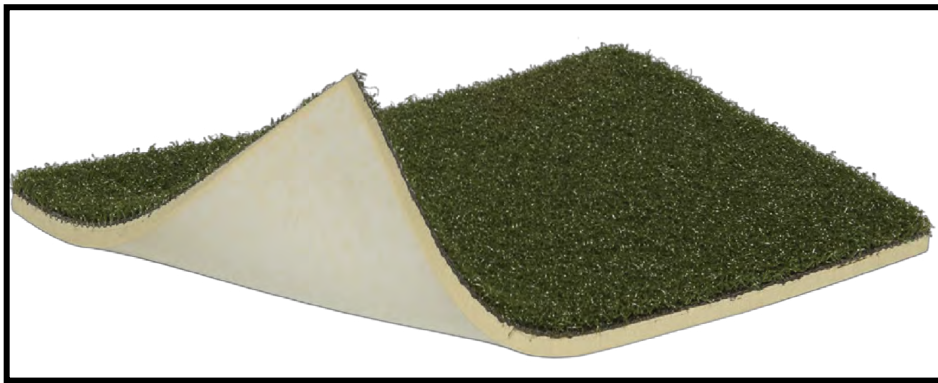
PRICES SUBJECT TO CHANGE & AVAILABILITY PLUS SHIPPING | VOLUME DISCOUNTS AVAILABLE | COOPERATIVE PURCHASING CONTRACT PRICING FOR 50 STATES

BEAM CLAY®

Synthetic Turf for Bocce Courts

WHOLESALE PRICE LIST

BOCCE TURF



25 oz. TEXTURIZED NYLON

Secondary Backing:	5mm Foam (with or without scrim)
Pile Height:	1/4" (+/- 1/8"), overall height approx. 1/2"
Roll Width:	12' Untrimmed
Perforated:	No
Color:	Forest Green
Shipping Weight:	107 oz per square yard

Applications:

Use foam back with scrim for gluing to concrete or macadam, use foam without scrim for installing over crushed aggregate.

These specifications are standard and may vary slightly due to manufacturing tolerances.

YOUR "ONE-STOP" SOURCE FOR AMERICA'S BASEBALL, SOFTBALL & SPORTS SURFACES & SUPPLIES!

PRICES SUBJECT TO CHANGE & AVAILABILITY PLUS SHIPPING | VOLUME DISCOUNTS AVAILABLE | COOPERATIVE PURCHASING CONTRACT PRICING FOR 50 STATES

PARTAC PEAT CORPORATION
ONE KELSEY PARK, GREAT MEADOWS, NEW JERSEY 07838

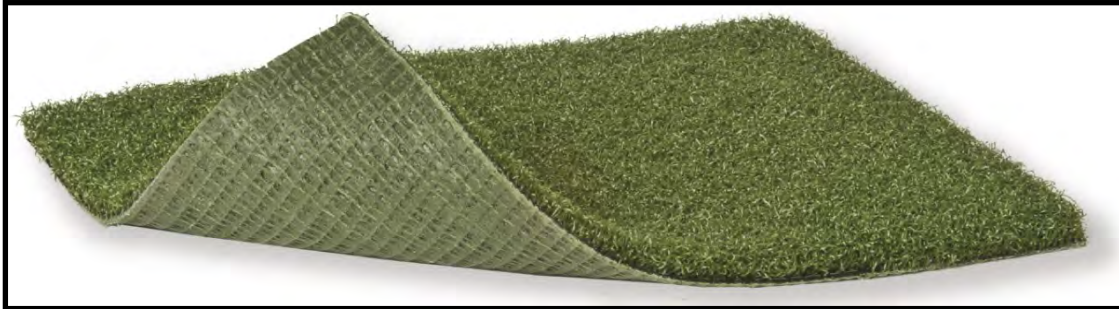
800-247-BEAM (2326) • (908) 637-4191 • FAX (908) 637-8421
www.beamclay.com • sales@beamclay.com
Bid Term - 5/9/18 - 5/8/20; Extended to 5/8/21; Extended to 5/8/22

BEAM CLAY®

Synthetic Turf for Bocce Courts

WHOLESALE PRICE LIST

BOCCE TURF



36 oz. TEXTURIZED NYLON

Secondary Backing:	1mm Rubber
Pile Height:	3/8" (+/- 1/8")
Roll Width:	15' Untrimmed
Perforated:	No
Color:	Forest Green
Shipping Weight:	84 oz per square yard

These specifications are standard and may vary slightly due to manufacturing tolerances.

YOUR "ONE-STOP" SOURCE FOR AMERICA'S BASEBALL, SOFTBALL & SPORTS SURFACES & SUPPLIES!

PRICES SUBJECT TO CHANGE & AVAILABILITY PLUS SHIPPING | VOLUME DISCOUNTS AVAILABLE | COOPERATIVE PURCHASING CONTRACT PRICING FOR 50 STATES

PARTAC PEAT CORPORATION
ONE KELSEY PARK, GREAT MEADOWS, NEW JERSEY 07838

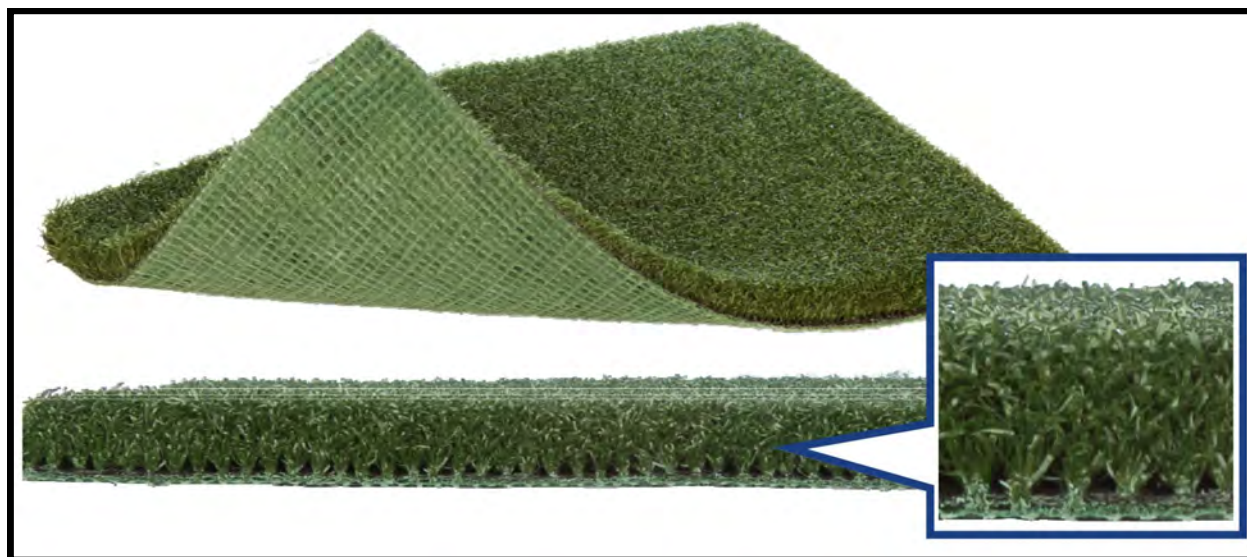
800-247-BEAM (2326) • (908) 637-4191 • FAX (908) 637-8421
www.beamclay.com • sales@beamclay.com
Bid Term - 5/9/18 - 5/8/20; Extended to 5/8/21; Extended to 5/8/22

BEAM CLAY®

Synthetic Turf for Bocce Courts

WHOLESALE PRICE LIST

BOCCE TURF



48 oz. NYLON

- Secondary Backing:** 1mm Rubber
- Pile Height:** 9/16" (+/- 1/8"), overall height approx. 5/8"
- Roll Width:** 15' Untrimmed
- Perforated:** No
- Color:** Forest Green
- Shipping Weight:** 83 oz per square yard

These specifications are standard and may vary slightly due to manufacturing tolerances.

YOUR "ONE-STOP" SOURCE FOR AMERICA'S BASEBALL, SOFTBALL & SPORTS SURFACES & SUPPLIES!

PRICES SUBJECT TO CHANGE & AVAILABILITY PLUS SHIPPING | VOLUME DISCOUNTS AVAILABLE | COOPERATIVE PURCHASING CONTRACT PRICING FOR 50 STATES

PARTAC PEAT CORPORATION
ONE KELSEY PARK, GREAT MEADOWS, NEW JERSEY 07838

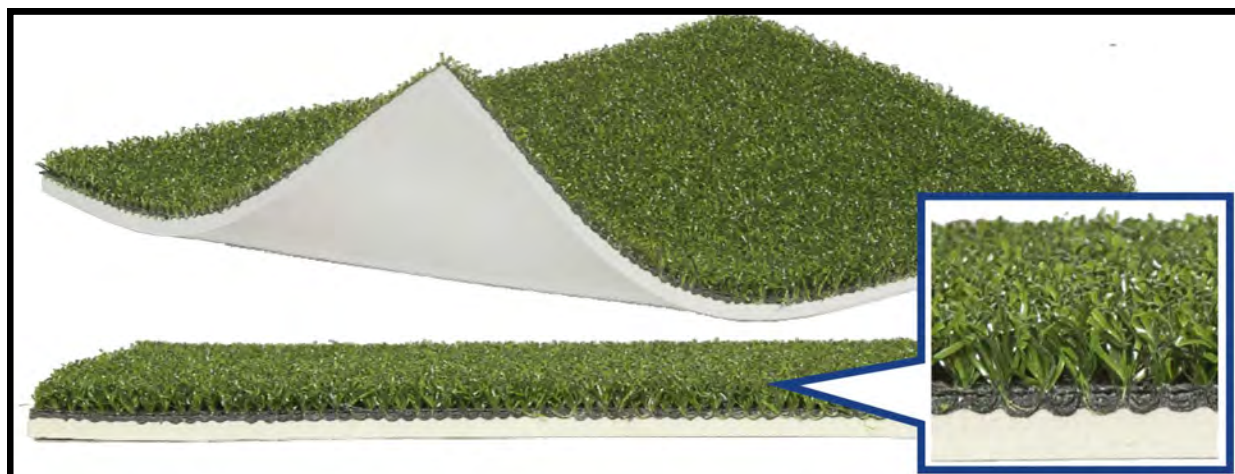
800-247-BEAM (2326) • (908) 637-4191 • FAX (908) 637-8421
www.beamclay.com • sales@beamclay.com
Bid Term - 5/9/18 - 5/8/20; Extended to 5/8/21; Extended to 5/8/22

BEAM CLAY®

Synthetic Turf for Bocce Courts

WHOLESALE PRICE LIST

BOCCE TURF



24 oz. POLYPROPYLENE

Secondary Backing:	5mm Foam with or without scrim
Pile Height:	1/4" (+/- 1/8"), overall height approx. 1/2"
Roll Width:	12' Untrimmed
Perforated:	No
Color:	Pine
Shipping Weight:	108 oz per square yard with scrim

These specifications are standard and may vary slightly due to manufacturing tolerances.

YOUR "ONE-STOP" SOURCE FOR AMERICA'S BASEBALL, SOFTBALL & SPORTS SURFACES & SUPPLIES!

PRICES SUBJECT TO CHANGE & AVAILABILITY PLUS SHIPPING | VOLUME DISCOUNTS AVAILABLE | COOPERATIVE PURCHASING CONTRACT PRICING FOR 50 STATES

PARTAC PEAT CORPORATION
 ONE KELSEY PARK, GREAT MEADOWS, NEW JERSEY 07838

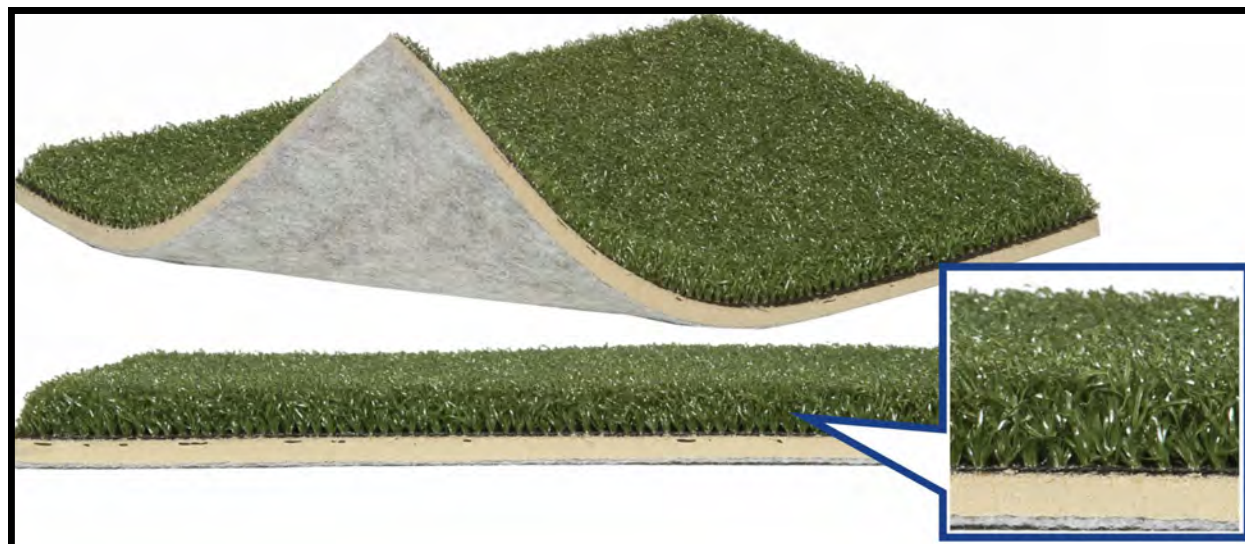
800-247-BEAM (2326) • (908) 637-4191 • FAX (908) 637-8421
 www.beamclay.com • sales@beamclay.com
 Bid Term - 5/9/18 - 5/8/20; Extended to 5/8/21; Extended to 5/8/22

BEAM CLAY®

Synthetic Turf for Bocce Courts

WHOLESALE PRICE LIST

BOCCE TURF



36 oz. POLYPROPYLENE

- Yarn Type:** Polypropylene
- Shipping Weight:** 118 oz per sq yard (with 5mm foam)
71 oz per sq yard (with 1mm rubber)
63 oz per sq yard (with black unitary)
- Pile Height:** 9/16" (+/- 1/8")
- Roll Width:** 12' (All colors Available)
15' (Pine & Spring Green Only)
- Perforated:** No
- Color:** Pine (Darker Solid Green above), Spring Green (Lighter Multi-Shades), Clay, Red, White, Blue, Orange, Yellow, Black, Purple, Crimson, Maroon, Brown, Navy



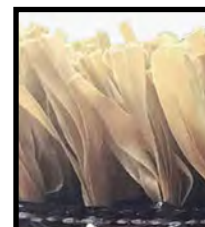
YOUR "ONE-STOP" SOURCE FOR AMERICA'S BASEBALL, SOFTBALL & SPORTS SURFACES & SUPPLIES!

PRICES SUBJECT TO CHANGE & AVAILABILITY PLUS SHIPPING | VOLUME DISCOUNTS AVAILABLE | COOPERATIVE PURCHASING CONTRACT PRICING FOR 50 STATES

PARTAC PEAT CORPORATION
 ONE KELSEY PARK, GREAT MEADOWS, NEW JERSEY 07838

800-247-BEAM (2326) • (908) 637-4191 • FAX (908) 637-8421
 www.beamclay.com • sales@beamclay.com
 Bid Term - 5/9/18 - 5/8/20; Extended to 5/8/21; Extended to 5/8/22

BOCCE TURF



BOCCIE 36L PRODUCT DATA SHEET

Primary Yarn Type:	36 oz. Polyethylene Pile
Yarn Cross Section:	Slitfilm
Standard Colors:	Silver, Vegas Gold, Navy, Purple, Crimson, Maroon, Light Blue, Carolina Blue
Secondary Backing:	5mm Foam Silver Back™ Polyurethane
Perforations:	No
Pile Height:	9/16"
Shipping Weight:	124 oz/sq. yd with 5mm Foam 69 oz/sq. yd with Silver Back™ Polyurethane
Fabric Width:	12 ft.
Application:	This product can be installed outdoors on concrete, asphalt, or a compacted aggregate base or indoors on concrete. These specifications are standard and may vary slightly due to manufacturing tolerances.

YOUR "ONE-STOP" SOURCE FOR AMERICA'S BASEBALL, SOFTBALL & SPORTS SURFACES & SUPPLIES!

PRICES SUBJECT TO CHANGE & AVAILABILITY PLUS SHIPPING | VOLUME DISCOUNTS AVAILABLE | COOPERATIVE PURCHASING CONTRACT PRICING FOR 50 STATES

BEAM CLAY®

Synthetic Turf for Bocce Courts

WHOLESALE PRICE LIST

BOCCE TURF



42 oz. POLYPROPYLENE

Secondary Backing:	1mm Rubber
Pile Height:	9/16" (+/- 1/8")
Roll Width:	15' Untrimmed
Perforated:	No
Color:	Pine, Clay
Shipping Weight:	96 oz per square yard

These specifications are standard and may vary slightly due to manufacturing tolerances.

YOUR "ONE-STOP" SOURCE FOR AMERICA'S BASEBALL, SOFTBALL & SPORTS SURFACES & SUPPLIES!

PRICES SUBJECT TO CHANGE & AVAILABILITY PLUS SHIPPING | VOLUME DISCOUNTS AVAILABLE | COOPERATIVE PURCHASING CONTRACT PRICING FOR 50 STATES

PARTAC PEAT CORPORATION
 ONE KELSEY PARK, GREAT MEADOWS, NEW JERSEY 07838

800-247-BEAM (2326) • (908) 637-4191 • FAX (908) 637-8421
www.beamclay.com • sales@beamclay.com
 Bid Term - 5/9/18 - 5/8/20; Extended to 5/8/21; Extended to 5/8/22

INSTALLING BOCCE TURF™ ON CONCRETE

Floor Preparation

Concrete should be cured, clean and dry. Concrete shall be free of paint, dirt, grease, oil curing or parting agents, and other contaminants, including sealers, that may interfere with the bonding of the adhesive. Whenever a powdery or porous surface is encountered, a primer compatible with the adhesive shall be used to provide a suitable surface for the glue-down installation. Patching of cracks and depressions shall be made with an appropriate and compatible latex or polymer fortified patching compound. Do not exceed manufacturer's recommendations for patch thickness. Large patched areas must be primed.

Recommended Glues

Nordot 34G for 50°F and up. Buy direct from Synthetic Surfaces Inc. at 908-233-6803.

Turf Claw for 55°F and up available shipped with turf.

Robert's 6700 Indoor/Outdoor for over 60°F available at Home Depot or Lowes.

Turf Installation

Unroll in place to be sure fit is correct.

Roll up section at one end and apply glue to concrete. Unroll over glue.

Roll up from other end. Apply glue to concrete. Unroll over glue.

Roll with 100 pound roller. Re-roll 5-6 hours later.

Cure times will vary and will be affected if overnight temperatures drop below 60°F.

Make sure glue has 24 hours to dry by covering with plastic if wet weather is projected within 24 hours.

YOUR “ONE-STOP” SOURCE FOR AMERICA'S BASEBALL, SOFTBALL & SPORTS SURFACES & SUPPLIES!

PRICES SUBJECT TO CHANGE & AVAILABILITY PLUS SHIPPING | VOLUME DISCOUNTS AVAILABLE | COOPERATIVE PURCHASING CONTRACT PRICING FOR 50 STATES

General Maintenance

OUTDOOR USE

Sweep the synthetic turf as needed frequently with a broom to remove surface soil, and hose down occasionally with water. Do not use a rotary brush machine.

INDOOR USE

Vacuum the grass like carpeting as you would any other type of carpeting to pick up surface soil.

STAIN REMOVAL

Synthetic turf is resistant to stains. However, spills do occur, and the resulting stains should be removed as soon as possible. In most cases, they can be removed with either detergent suds or a solvent-based cleaning agent. Follow the **STAIN REMOVAL CHART** for specifics.

Stain Removal Chart

WATER-BORNE AND MISCELLANEOUS STAINS

Acid, Alcohol, Animal Urine, Alkali, Blood, Coffee, Tea, Cola, Soot, Chocolate, Dye, Glue, Fruit Juice, Ice Cream, Latex Paint, Milk, Mustard, Rust, Water Colors

REMEDY

Sponge with detergent suds and cold water. This method will be effective even after 24 hours. Note: It is important to use just enough fluid to irrigate solid particles out of fabric. Too much fluid will leave a "ring." Clean from outside of stain in toward center so as not to leave a ring.

PERSISTANT STAINS

Chewing Gum
Crayon
Nail Polish
Lipstick
Metal Polish
Furniture Stain
Tar
Oil Paints

REMEDY

Spray with Freon Aerosol and Scrape
Sponge with dry cleaning solvent
Sponge with acetone.
Sponge with dry cleaning solvent
Sponge with dry cleaning solvent
Sponge with dry cleaning solvent
Scrape Excess, Sponge with dry Cleaning Solvent
Blot Immediately, Sponge with turpentine or paint remover. Blot with detergent and water. Re-sponge with cold water to remove detergent

EMULSIFIED STAINS

Cosmetics, Ink, Shoe Polish

REMEDY

Sponge with detergent and cold water. Apply solvent. Clean solvent residue with soap and water. Re-sponge with cold water to remove detergent

Note: in some cases it may be necessary to repeat any of the above procedures to insure thorough cleaning

YOUR "ONE-STOP" SOURCE FOR AMERICA'S BASEBALL, SOFTBALL & SPORTS SURFACES & SUPPLIES!

PRICES SUBJECT TO CHANGE & AVAILABILITY PLUS SHIPPING | VOLUME DISCOUNTS AVAILABLE | COOPERATIVE PURCHASING CONTRACT PRICING FOR 50 STATES

BEAM CLAY[®]

WHOLESALE PRICE LIST EFFECTIVE: JANUARY 1, 2021

Synthetic Turf Infill

SYNTHETIC TURF INFILL

ROUNDED GREEN COLORED SAND, F.O.B. GA

	50 LB. BAG	3,000 LB. BAG	BULK
12-20 Sieve, Green	\$25 GA-STI-12-20-G	—	—
16-30 Sieve, Green/Black Blend	\$25 GA-STI-16-30-GBB	—	—
30-50 Sieve, Green/Black Blend	\$25 GA-STI-30-50-GBB	—	—

ROUNDED COLORED SAND - 21 Colors: Green, Red, BCM Blue, 787 Blue, Navy, Yellow, OSHA Yellow, Teak, Teal, Blue/Grey, Black, Grey, White, Light Beige, Buff, Tan, Camel, Chocolate, Walnut, Smoke, Peach, and 7 Premium Colors: (add \$3.25/bag): Burgundy, Fiesta Red, Grape, Hunter Green, Light Rose, Orange, Plum. (See Full Color Chart on next page.) Blends of colors add \$3.50/bag. 10% overage possible. 8 bag minimum. Custom colors and blends available. For UV-resistant color (recommended for artificial turf applications), add \$2.50/bag, F.O.B. IL.

40-100 Sieve	\$21.95 IL-STI-40-100	—	—
30-50 Sieve	\$21.95 IL-STI-30-50	—	—

PALLET & COVER CHARGES - \$8/PALLET FROM IL. UP TO 50 BAGS/PALLET. **IL-PALLET**

SUB-ANGULAR COLORED SAND - Same colors & additional charges as Rounded Colored Sand, F.O.B. IL.

20-40 Sieve	\$24.95 IL-STI-20-40	—	—
16-40 Sieve	\$27.95 IL-STI-16-40	—	—

PALLET & COVER CHARGES - \$8/PALLET FROM IL. UP TO 50 BAGS/PALLET. **IL-PALLET**

WHITE SUB-ANGULAR SAND—WASHED—NOT COLORED—HEAT-TREATED, F.O.B. NJ

40-100** Sieve, Dry	—	\$335 USS-STI-40-100-3000#	\$88 USS-STI-40-100-BULK
30-50** Sieve, Dry	—	\$300 USS-STI-30-50-3000#	\$88 USS-STI-30-50-BULK
20-40** Sieve, Dry	—	\$310 USS-STI-20-40-3000#	\$90 USS-STI-20-40-BULK
16-30** Sieve, Dry	—	\$415 USS-STI-16-30-3000#	\$100 USS-STI-16-30-BULK
18-60** Sieve, Dry	—	\$198 W-STI-18-60-3000#	\$70 W-STI-18-60-BULK
18-100* Sieve, Dry	—	\$175 W-STI-18-100-3000#	\$65 W-STI-18-100-BULK
35-70* Sieve, Dry	—	\$190 W-STI-35-70-3000#	\$70 W-STI-35-70-BULK
35-100* Sieve, Dry	—	\$170 W-STI-35-100-3000#	\$50 W-STI-35-100-BULK

* Minimum Order: 1 Pallet

** Minimum Order: 11 Tons in Bulk or 4 Pallets of Bulk Bags

BULK BAG/PALLET \$10.50 PALLET \$& COVER CHARGE **RP-PALLET**

WHITE SUB-ANGULAR SAND—WASHED—NOT COLORED—Approx. 85% between .25mm and 1mm, 100% passing 2mm, F.O.B. NJ

SAND B, DOUBLE SCREENED, NOT HEAT-TREATED	\$5.25 STI-SANDB-BAG	—	\$48 STI-SANDB-BULK
SAND B, DOUBLE SCREENED, HEAT-TREATED	\$5.50 STI-SANDB-HT-BAG	—	\$69 STI-SANDB-HT-BULK

PALLET & COVER CHARGES - \$6.50/PALLET FROM IL. UP TO 50 BAGS/PALLET. **NJ-PALLET**

BLACK CRUMB RUBBER

	50 LB. BAG	2,000 LB. BAG	BULK
20 Minus Mesh, F.O.B. GA	\$28 STI-BCR-10-20-50		
10 Minus Mesh, F.O.B. NJ	\$10.50 STI-BCR-6-10-40	\$525/T STI-BCR-6-10-BB	—
20 Minus Mesh, F.O.B. NJ	\$11.50 STI-BCR-10-20-40	\$575/T STI-BCR-10-20-BB	—

CLEAN 3/16" RED LAVA (for red synthetic turf warning tracks), F.O.B. NJ

	50 LB. BAG	1-1/2 CY BAGS	
50 LB. BAG (approximately .85 cu.ft.) up to 40 bags/pallet	\$12.50 STI-CLNLAVA-BAG	—	—
One-Ton Bulk Bags	—	\$455/T STI-CLNLAVA-BB	—

YOUR "ONE-STOP" SOURCE FOR AMERICA'S BASEBALL, SOFTBALL & SPORTS SURFACES & SUPPLIES!

PRICES SUBJECT TO CHANGE & AVAILABILITY PLUS SHIPPING | VOLUME DISCOUNTS AVAILABLE | COOPERATIVE PURCHASING CONTRACT PRICING FOR 50 STATES

BEAM CLAY®

WHOLESALE PRICE LIST EFFECTIVE: JANUARY 1, 2021

Synthetic Turf Infill—Colored Sands

PARTAC® COLORED SANDS

Ceramically & Permanently Colored in 21 Colors: Green, Red, BCM Blue, 787 Blue, Navy, Yellow, OSHA Yellow, Teak, Teal, Blue/Grey, Black, Grey, White, Light Beige, Buff, Tan, Camel, Chocolate, Walnut, Smoke, Peach, and 7 Premium Colors: (add \$3.25/bag): Burgundy, Fiesta Red, Grape, Hunter Green, Light Rose, Orange, Plum. (See Full Color Chart on next page.) Blends of colors add \$3.50/bag. 10% overage possible. 8 bag minimum. Custom colors and blends available. For UV-resistant color (recommended for artificial turf applications), add \$2.50/bag. Also available in one-ton bulk bags. Same price per ton as in 50 lb. bags. Premium colors: 120 bag minimum if not in stock.



		IL PLANT
Extra Fine 40/100 mesh (.15-.42mm), predominately 70 mesh (.21mm) 1 Color	IL-R40-100S	\$21.95
Fine 30/50 mesh (.3-.6mm), predominately 40 mesh (.42mm) 1 Color	IL-R30-50S	\$21.95
Medium 20/40 mesh (.42-.84mm), predominately 30 mesh (.59mm) 1 Color	IL-SA20-40-S	\$24.95
Coarse: 9/60 mesh (.25-2mm), predominately 16-30 mesh (.59-1.2mm) Dark Green or Red—NJ Plant	GS-HG-C-NJ-BG GS-R-C-NJ-BG	\$13.75
Medium Plus 16/40 mesh (.42-1.2mm), predominately 20 mesh (.84mm) 1 Color	IL-SA16-40S	\$27.95
Medium Extra 12/30 mesh (.59-1.7mm), predominately 16 mesh (1.2mm) 1 Color	IL-12-30S	Call for Price
Extra-Large (3-4mm) 1 Color	IL-3-4S	\$35.95

PALLET & COVER CHARGES - \$6.50/PALLET FROM NJ. UP TO 50 BAGS/PALLET. #NJ-PALLET
 PALLET & COVER CHARGES - \$8/PALLET FROM IL. UP TO 50 BAGS/PALLET. #IL-PALLET

YOUR “ONE-STOP” SOURCE FOR AMERICA’S BASEBALL, SOFTBALL & SPORTS SURFACES & SUPPLIES!

PRICES SUBJECT TO CHANGE & AVAILABILITY PLUS SHIPPING | VOLUME DISCOUNTS AVAILABLE | COOPERATIVE PURCHASING CONTRACT PRICING FOR 50 STATES

PARTAC PEAT CORPORATION
 ONE KELSEY PARK, GREAT MEADOWS, NEW JERSEY 07838

800-247-BEAM (2326) • (908) 637-4191 • FAX (908) 637-8421
 www.beamclay.com • sales@beamclay.com
 Bid Term - 5/9/18 - 5/8/20; Extended to 5/8/21; Extended to 5/8/22

BEAM CLAY®

Synthetic Turf Infill—Colored Sands



YOUR “ONE-STOP” SOURCE FOR AMERICA’S BASEBALL, SOFTBALL & SPORTS SURFACES & SUPPLIES!

PRICES SUBJECT TO CHANGE & AVAILABILITY PLUS SHIPPING | VOLUME DISCOUNTS AVAILABLE | COOPERATIVE PURCHASING CONTRACT PRICING FOR 50 STATES

PARTAC PEAT CORPORATION
ONE KELSEY PARK, GREAT MEADOWS, NEW JERSEY 07838

800-247-BEAM (2326) • (908) 637-4191 • FAX (908) 637-8421
www.beamclay.com • sales@beamclay.com
Bid Term - 5/9/18 - 5/8/20; Extended to 5/8/21; Extended to 5/8/22

BEAM CLAY[®]

WHOLESALE PRICE LIST EFFECTIVE: JANUARY 1, 2021

Synthetic Turf Infill

	ITEM #	UNIT	EACH
Extra Fine 40/100 mesh			
STANDARD COLORS—Extra Fine 40/100 mesh (.15-.42mm), predominately 70 mesh (.21mm) 1 Color COLORS: Green, Red, BCM Blue, 787 Blue, Navy, Yellow, OSHA Yellow, Teak, Teal, Blue/Grey, Black, Grey, White, Light Beige, Buff, Tan, Camel, Chocolate, Walnut, Smoke, Peach, F.O.B. IL 50 LB.	IL-R40-100S	50 LB BAG	\$21.95
PREMIUM COLORS—Extra Fine 40/100 mesh (.15-.42mm), predominately 70 mesh (.21mm) 1 Color COLORS: Burgundy, Fiesta Red, Grape, Hunter Green, Light Rose, Orange, Plum	IL-R40-100P	50 LB BAG	\$25.20
BLENDS OF STANDARD COLORS—Extra Fine 40/100 mesh (8 bag minimum)	IL-R40-100SB	50 LB BAG	\$25.45
BLENDS OF PREMIUM COLORS—Extra Fine 40/100 (120 bag minimum, if not in stock)	IL-R40-100PB	50 LB BAG	\$28.70
UV RESISTANT COLOR—STANDARD COLORS—Extra Fine 40/100 mesh (8 bag minimum—1 Color)	IL-R40-100SUV	50 LB BAG	\$24.45
UV RESISTANT COLOR—PREMIUM COLORS—Extra Fine 40/100 mesh (120 bag minimum, if not in stock—1 Color)	IL-R40-100PUV	50 LB BAG	\$27.70
UV RESISTANT COLOR—BLENDS OF STANDARD COLORS—Extra Fine 40/100 mesh (8 bag minimum)	IL-R40-100SUVB	50 LB BAG	\$27.95
UV RESISTANT COLOR—BLENDS OF PREMIUM COLORS—Extra Fine 40/100 mesh (120 bag minimum, if not in stock)	IL-R40-100PUVB	50 LB BAG	\$31.20
Fine 30/50 mesh			
STANDARD COLORS—Fine 30/50 mesh (.3-.6mm), predominately 40 mesh (.42mm) 1 Color COLORS: Green, Red, BCM Blue, 787 Blue, Navy, Yellow, OSHA Yellow, Teak, Teal, Blue/Grey, Black, Grey, White, Light Beige, Buff, Tan, Camel, Chocolate, Walnut, Smoke, Peach, F.O.B. IL 50 LB.	IL-R30-50S	50 LB BAG	\$21.95
PREMIUM COLORS—Fine 30/50 mesh (.3-.6mm), predominately 40 mesh (.42mm) 1 Color COLORS: Burgundy, Fiesta Red, Grape, Hunter Green, Light Rose, Orange, Plum	IL-R30-50P	50 LB BAG	\$25.20
BLENDS OF STANDARD COLORS—Fine 30/50 mesh (8 bag minimum)	IL-R30-50SB	50 LB BAG	\$25.45
BLENDS OF PREMIUM COLORS—Fine 30/50 mesh (120 bag minimum, if not in stock)	IL-R30-50PB	50 LB BAG	\$28.70
UV RESISTANT COLOR—STANDARD COLORS—Fine 30/50 mesh (8 bag minimum—1 Color)	IL-R30-50SUV	50 LB BAG	\$24.45
UV RESISTANT COLOR—PREMIUM COLORS—Fine 30/50 mesh (120 bag minimum, if not in stock—1 Color)	IL-R30-50PUV	50 LB BAG	\$27.70
UV RESISTANT COLOR—BLENDS OF STANDARD COLORS—Fine 30/50 mesh (8 bag minimum)	IL-R30-50SUVB	50 LB BAG	\$27.95
UV RESISTANT COLOR—BLENDS OF PREMIUM COLORS—Fine 30/50 mesh (120 bag minimum, if not in stock)	IL-R30-50PUVB	50 LB BAG	\$31.20
Medium 20/40 mesh			
STANDARD COLORS—Medium 20/40 mesh (.42-.84mm), predominately 30 mesh (.59mm) 1 Color COLORS: Green, Red, BCM Blue, 787 Blue, Navy, Yellow, OSHA Yellow, Teak, Teal, Blue/Grey, Black, Grey, White, Light Beige, Buff, Tan, Camel, Chocolate, Walnut, Smoke, Peach, F.O.B. IL 50 LB.	IL-SA20-40-S	50 LB BAG	\$24.95
PREMIUM COLORS—Medium 20/40 mesh (.42-.84mm), predominately 30 mesh (.59mm) 1 Color COLORS: Burgundy, Fiesta Red, Grape, Hunter Green, Light Rose, Orange, Plum	IL-SA20-40-P	50 LB BAG	\$28.20
BLENDS OF STANDARD COLORS—Medium 20/40 mesh (.42-.84mm), predominately 30 mesh (.59mm) (8 bag minimum)	IL-SA20-40SB	50 LB BAG	\$28.45
BLENDS OF PREMIUM COLORS—Medium 20/40 mesh (.42-.84mm), predominately 30 mesh (.59mm) (120 bag minimum, if not in stock)	IL-SA20-40PB	50 LB BAG	\$31.70
UV RESISTANT COLOR—STANDARD COLORS—Medium 20/40 mesh (.42-.84mm), predominately 30 mesh (.59mm) (8 bag minimum—1 Color)	IL-SA20-40SUV	50 LB BAG	\$27.45
UV RESISTANT COLOR—PREMIUM COLORS—Medium 20/40 mesh (.42-.84mm), predominately 30 mesh (.59mm) (120 bag minimum, if not in stock—1 Color)	IL-SA20-40PUV	50 LB BAG	\$30.70
UV RESISTANT COLOR—BLENDS OF STANDARD COLORS—Medium 20/40 mesh (.42-.84mm), predominately 30 mesh (.59mm) (8 bag minimum)	IL-SA20-40SUVB	50 LB BAG	\$30.95
UV RESISTANT COLOR—BLENDS OF PREMIUM COLORS—Medium 20/40 mesh (.42-.84mm), predominately 30 mesh (.59mm) (120 bag minimum, if not in stock)	IL-SA20-40PUVB	50 LB BAG	\$34.20
Coarse 9/60 mesh			
Coarse 9/60 mesh (.25-.2mm), predominately 16-30 mesh (.59-1.2mm) Dark Green or Red—NJ Plant	GA99-60-C	50 LB BAG	\$13.75
Medium Plus 16/40 mesh			
STANDARD COLORS—Medium Plus 16/40 mesh (.42-1.2mm), predominately 20 mesh (.84mm) 1 Color COLORS: Green, Red, BCM Blue, 787 Blue, Navy, Yellow, OSHA Yellow, Teak, Teal, Blue/Grey, Black, Grey, White, Light Beige, Buff, Tan, Camel, Chocolate, Walnut, Smoke, Peach, F.O.B. IL 50 LB.	IL-SA16-40S	50 LB BAG	\$27.95
PREMIUM COLORS—Medium Plus 16/40 mesh (.42-1.2mm), predominately 20 mesh (.84mm) 1 Color COLORS: Burgundy, Fiesta Red, Grape, Hunter Green, Light Rose, Orange, Plum	IL-SA16-40P	50 LB BAG	\$31.20
BLENDS OF STANDARD COLORS—Medium Plus 16/40 mesh (.42-1.2mm), predominately 20 mesh (.84mm) (8 bag minimum)	IL-SA16-40SB	50 LB BAG	\$31.45
BLENDS OF PREMIUM COLORS—Medium Plus 16/40 mesh (.42-1.2mm), predominately 20 mesh (.84mm) (120 bag minimum, if not in stock)	IL-SA16-40PB	50 LB BAG	\$34.70
UV RESISTANT COLOR—STANDARD COLORS—Medium Plus 16/40 mesh (.42-1.2mm), predominately 20 mesh (.84mm) (8 bag minimum—1 Color)	IL-SA16-40SUV	50 LB BAG	\$30.45
UV RESISTANT COLOR—PREMIUM COLORS—Medium Plus 16/40 mesh (.42-1.2mm), predominately 20 mesh (.84mm) (120 bag minimum, if not in stock—1 Color)	IL-SA16-40PUV	50 LB BAG	\$33.70
UV RESISTANT COLOR—BLENDS OF STANDARD COLORS—Medium Plus 16/40 mesh (.42-1.2mm), predominately 20 mesh (.84mm) (8 bag minimum)	IL-SA16-40SUVB	50 LB BAG	\$33.95
UV RESISTANT COLOR—BLENDS OF PREMIUM COLORS—Medium Plus 16/40 mesh (.42-1.2mm), predominately 20 mesh (.84mm) (120 bag minimum, if not in stock)	IL-SA16-40PUVB	50 LB BAG	\$37.20
Medium Extra 12/30 mesh			
STANDARD COLORS—Medium Extra 12/30 mesh (.59-1.7mm), predominately 16 mesh (1.2mm) 1 Color COLORS: Green, Red, BCM Blue, 787 Blue, Navy, Yellow, OSHA Yellow, Teak, Teal, Blue/Grey, Black, Grey, White, Light Beige, Buff, Tan, Camel, Chocolate, Walnut, Smoke, Peach, F.O.B. IL 50 LB.	IL-12-30S	50 LB BAG	Call for Price
PREMIUM COLORS—12/30 mesh (.59-1.7mm), predominately 16 mesh (1.2mm) 1 Color COLORS: Burgundy, Fiesta Red, Grape, Hunter Green, Light Rose, Orange, Plum	IL-12-30P	50 LB BAG	Call for Price
BLENDS OF STANDARD COLORS—12/30 mesh (.59-1.7mm), predominately 16 mesh (1.2mm) (8 bag minimum)	IL-12-30SB	50 LB BAG	Call for Price
BLENDS OF PREMIUM COLORS—12/30 mesh (.59-1.7mm), predominately 16 mesh (1.2mm) (120 bag minimum, if not in stock)	IL-12-30PB	50 LB BAG	Call for Price
UV RESISTANT COLOR—STANDARD COLORS—12/30 mesh (.59-1.7mm), predominately 16 mesh (1.2mm) (8 bag minimum—1 Color)	IL-12-30SUV	50 LB BAG	Call for Price
UV RESISTANT COLOR—PREMIUM COLORS—12/30 mesh (.59-1.7mm), predominately 16 mesh (1.2mm) (120 bag minimum, if not in stock—1 Color)	IL-12-30PUV	50 LB BAG	Call for Price
UV RESISTANT COLOR—BLENDS OF STANDARD COLORS—12/30 mesh (.59-1.7mm), predominately 16 mesh (1.2mm) (8 bag minimum)	IL-12-30SUVB	50 LB BAG	Call for Price
UV RESISTANT COLOR—BLENDS OF PREMIUM COLORS—12/30 mesh (.59-1.7mm), predominately 16 mesh (1.2mm) (120 bag minimum, if not in stock)	IL-12-30PUVB	50 LB BAG	Call for Price
Extra-Large 3-4mm			
STANDARD COLORS—Extra-Large (3-4mm) 1 Color COLORS: Green, Red, BCM Blue, 787 Blue, Navy, Yellow, OSHA Yellow, Teak, Teal, Blue/Grey, Black, Grey, White, Light Beige, Buff, Tan, Camel, Chocolate, Walnut, Smoke, Peach, F.O.B. IL 50 LB.	IL-3-4S	50 LB BAG	\$35.95
PREMIUM COLORS—Extra-Large (3-4mm) 1 Color COLORS: Burgundy, Fiesta Red, Grape, Hunter Green, Light Rose, Orange, Plum	IL-3-4P	50 LB BAG	\$39.20
BLENDS OF STANDARD COLORS—Extra-Large (3-4mm) (8 bag minimum)	IL-3-4SB	50 LB BAG	\$39.45
BLENDS OF PREMIUM COLORS—Extra-Large (3-4mm) (120 bag minimum, if not in stock)	IL-3-4PB	50 LB BAG	\$42.70
UV RESISTANT COLOR—STANDARD COLORS—Extra-Large (3-4mm) (8 bag minimum—1 Color)	IL-3-4SUV	50 LB BAG	\$38.45
UV RESISTANT COLOR—PREMIUM COLORS—Extra-Large (3-4mm) (120 bag minimum, if not in stock—1 Color)	IL-3-4PUV	50 LB BAG	\$41.70
UV RESISTANT COLOR—BLENDS OF STANDARD COLORS—Extra-Large (3-4mm) (8 bag minimum)	IL-3-4SUVB	50 LB BAG	\$41.95
UV RESISTANT COLOR—BLENDS OF PREMIUM COLORS—Extra-Large (3-4mm) (120 bag minimum, if not in stock)	IL-3-4PUVB	50 LB BAG	\$45.20
PALLET & COVER CHARGES FROM IL PLANT	IL-PALLET	EACH	\$8

YOUR "ONE-STOP" SOURCE FOR AMERICA'S BASEBALL, SOFTBALL & SPORTS SURFACES & SUPPLIES!

PRICES SUBJECT TO CHANGE & AVAILABILITY PLUS SHIPPING | VOLUME DISCOUNTS AVAILABLE | COOPERATIVE PURCHASING CONTRACT PRICING FOR 50 STATES

PARTAC PEAT CORPORATION
ONE KELSEY PARK, GREAT MEADOWS, NEW JERSEY 07838

800-247-BEAM (2326) • (908) 637-4191 • FAX (908) 637-8421
www.beamclay.com • sales@beamclay.com
Bid Term - 5/9/18 - 5/8/20; Extended to 5/8/21; Extended to 5/8/22

BEAM CLAY®

WHOLESALE PRICE LIST
 EFFECTIVE: JANUARY 1, 2021

Synthetic Turf Tape, Glue, Cleaners Velcro & Foam Playground Pads

SYNTHETIC TURF CLEANERS

ProVet Turf Care for cleaning turf outdoors, F.O.B. GA

STC-PVTC4	Four 1 gallon containers/case	\$120
STC-PVTCK	Kit (two ½ gallon containers with one pump sprayer)	\$150
STC-PVTCIN	ProGienics for cleaning indoor turf (Four 1 gallon containers/case)	\$135
STC-PVTCIN5G	One 5-gallon container	\$160

Velcro Option, F.O.B. GA

ST-VSO	Velcro going the full length of rolls on both sides—foam backed turf only @ an additional cost to the sf turf cost.	\$.75/LF
---------------	---	-----------------



Foam Pads for Playgrounds, perforated, F.O.B. GA

ST-FP145	1" Thick, 4' x 5'	\$48/each
ST-FP245	2" Thick, 4' x 5'	\$55/each



SYNTHETIC TURF TAPE, F.O.B. GA

ST-TAPELF	Tape for seams, 12" wide	\$1/LF
ST-TAPEROLL	200' Roll	\$145/ROLL

SYNTHETIC TURF GLUE, F.O.B. GA

TURF CLAW ADHESIVE

STG-TCA5PBT	5-Gallon Bucket, for rubber or polyurethane backed turf Coverage 30-35 SF/gallon 28 oz Tube, Coverage 1.5 SF	\$395/EA. \$49/EA.
--------------------	--	-------------------------------------

TURF CLAW FB ADHESIVE

STG-TCA4FBT	4-Gallon Bucket, for foam backed turf Coverage approx. 200sf	\$150/EA.
--------------------	---	------------------



YOUR "ONE-STOP" SOURCE FOR AMERICA'S BASEBALL, SOFTBALL & SPORTS SURFACES & SUPPLIES!

PRICES SUBJECT TO CHANGE & AVAILABILITY PLUS SHIPPING | VOLUME DISCOUNTS AVAILABLE | COOPERATIVE PURCHASING CONTRACT PRICING FOR 50 STATES

BEAM CLAY®

WHOLESALE PRICE LIST
 EFFECTIVE: JANUARY 1, 2021

St.Pierre Bocce Balls

Our Premium Bocce Sets are Made in the USA and are approved for tournament play by the Bocce Federation of America. St.Pierre Bocce sets feature solid, one-piece construction balls crafted with precision roundness and balance. The balls are made of a thermo-set composition resin and are striped for 2 to 4 player competition. This tournament grade set is manufactured to International Bocce specifications and is an Official Ball of the United States Bocce Federation. St.Pierre Sports has been offering customers consistent quality and on-time delivery for more than 75 years.

SPORT BOCCE SET #SB1

Made in the USA, the premium-quality **St.Pierre Sport Bocce Set with Nylon Bag** are an absolute must-own for serious players. These high quality solid resin balls boast one-piece construction and are crafted with precision roundness and balance that's approved for tournament play. Your new nylon carrying tote includes four red and four blue bocce balls measuring 100 mm, a 50 mm yellow pallino, and an official rule booklet for beginners.

Contents:

- Color: Red/Blue
- Size: 100mm
- High-Quality, Solid All-Resin Balls
- Manufactured to Tournament Grade Standards
- Precision Roundness and Balance
- Ideal for Families, Backyards, Beaches, and Serious Competitions
- Sets come with 8 solid 100mm bocce balls (4 red, 4 blue) striped for 2 or 4 players, 50mm pallino, rulebook, and 600D Nylon Carry Bag



SB1

Sport Bocce Outfit (100mm) in 600D Nylon Carry Bag
 4 red balls (2 patterns), 4 blue balls (2 patterns), 50mm
 yellow jack ball, official rulebook in a 600D nylon carry bag.

\$67.95/EA



YOUR "ONE-STOP" SOURCE FOR AMERICA'S BASEBALL, SOFTBALL & SPORTS SURFACES & SUPPLIES!

PRICES SUBJECT TO CHANGE & AVAILABILITY PLUS SHIPPING | VOLUME DISCOUNTS AVAILABLE | COOPERATIVE PURCHASING CONTRACT PRICING FOR 50 STATES

BEAM CLAY®

WHOLESALE PRICE LIST
EFFECTIVE: JANUARY 1, 2021

St.Pierre Bocce Balls

Our Premium Bocce Sets are Made in the USA and are approved for tournament play by the Bocce Federation of America. St.Pierre Bocce sets feature solid, one-piece construction balls crafted with precision roundness and balance. The balls are made of a thermo-set composition resin and are striped for 2 to 4 player competition. This tournament grade set is manufactured to International Bocce specifications and is an Official Ball of the United States Bocce Federation. St.Pierre Sports has been offering customers consistent quality and on-time delivery for more than 75 years.

TOURNAMENT BOCCE SET #PB1

Proudly Made in the USA. Our professional quality **Tournament Bocce Set** features solid, one-piece construction balls crafted with precision roundness and balance. The balls are made of a thermo-set composition resin and are striped for 2 to 4 player competition. This tournament grade set is manufactured to International Bocce specifications and is an Official Ball of the United States Bocce Federation.

The Set includes all the equipment necessary for 2 – 4 person play including 8 107mm thermo-set composite resin balls (4 dark red and 4 dark green), 1 yellow jack ball (57mm).

Great fun for novices or experts.

The outfit comes with a zippered nylon tote bag.



PB1 Professional Bocce Outfit (107mm) in 600D Nylon Carry Bag 4 dark red (2 patterns) and 4 dark green (2 patterns) balls, 60mm yellow jack ball, and official rulebook in a 600D nylon carry bag.

\$87.95/EA



YOUR “ONE-STOP” SOURCE FOR AMERICA’S BASEBALL, SOFTBALL & SPORTS SURFACES & SUPPLIES!

PRICES SUBJECT TO CHANGE & AVAILABILITY PLUS SHIPPING | VOLUME DISCOUNTS AVAILABLE | COOPERATIVE PURCHASING CONTRACT PRICING FOR 50 STATES

BEAM CLAY®

WHOLESALE PRICE LIST
 EFFECTIVE: JANUARY 1, 2021

St.Pierre Bocce Balls

Our Premium Bocce Sets are Made in the USA and are approved for tournament play by the Bocce Federation of America. St.Pierre Bocce sets feature solid, one-piece construction balls crafted with precision roundness and balance. The balls are made of a thermo-set composition resin and are striped for 2 to 4 player competition. This tournament grade set is manufactured to International Bocce specifications and is an Official Ball of the United States Bocce Federation. St.Pierre Sports has been offering customers consistent quality and on-time delivery for more than 75 years.

TOURNAMENT BOCCE SET #TB1

Proudly Made in the USA. Our professional quality **Tournament Bocce Set** features solid, one-piece construction balls crafted with precision roundness and balance. The balls are made of a thermo-set composition resin and are striped for 2 to 4 player competition. This tournament grade set is manufactured to International Bocce specifications and is an Official Ball of the United States Bocce Federation. The Set includes all the equipment necessary for 2 – 4 person play including 8 107mm thermo-set composite resin balls (4 dark red and 4 dark green), 1 yellow jack ball (57mm). Great fun for novices or experts. The outfit comes with a zippered nylon tote bag.

Contents:

- 4 dark red and 4 dark green 107mm thermo-set composite resin balls striped for 2-4 person play
- 1 57mm yellow jack ball
- Rulebook with court layout and dimensions
- Comes with a zippered nylon tote storage bag

Product Dimensions (L x W x H) & Weight (lbs.):
 18 3/8" x 9" x 5" | 20 lbs.



TB1	Tournament Bocce Outfit (107mm) – in Corrugated Box with Nylon Tote Bag 4 dark red (2 patterns) and 4 dark green (2 patterns) balls, 57mm yellow jack ball, and official rulebook in a corrugated box. Comes with a durable Nylon Tote Bag.	\$119.95/EA
-----	---	-------------

YOUR “ONE-STOP” SOURCE FOR AMERICA’S BASEBALL, SOFTBALL & SPORTS SURFACES & SUPPLIES!

PRICES SUBJECT TO CHANGE & AVAILABILITY PLUS SHIPPING | VOLUME DISCOUNTS AVAILABLE | COOPERATIVE PURCHASING CONTRACT PRICING FOR 50 STATES

BEAM CLAY®

WHOLESALE PRICE LIST
 EFFECTIVE: JANUARY 1, 2021

St.Pierre Bocce Balls

Our Premium Bocce Sets are Made in the USA and are approved for tournament play by the Bocce Federation of America. St.Pierre Bocce sets feature solid, one-piece construction balls crafted with precision roundness and balance. The balls are made of a thermo-set composition resin and are striped for 2 to 4 player competition. This tournament grade set is manufactured to International Bocce specifications and is an Official Ball of the United States Bocce Federation. St.Pierre Sports has been offering customers consistent quality and on-time delivery for more than 75 years.

TOURNAMENT BOCCE SET— MAHOGANY CASE #TB2

Proudly Made in the USA. Our professional quality **Tournament Bocce Set** features solid, one-piece construction balls crafted with precision roundness and balance. The balls are made of a thermo-set composition resin and are striped for 2 to 4 player competition. This tournament grade set is manufactured to International Bocce specifications and is an Official Ball of the United States Bocce Federation. The Set includes all the equipment necessary for 2 – 4 person play including 8 107mm thermo-set composite resin balls (4 dark red and 4 dark green), 1 yellow jack ball (57mm). Great fun for novices or experts.

Contents:

- 4 dark red and 4 dark green 107mm thermo-set composite resin balls striped for 2-4 person play
- 1 57mm yellow jack ball
- Rulebook with court layout and dimensions
- Comes in an attractive mahogany stained pine carrying case with built in handle and burnt in logo.

Product Dimensions (L x W x H) & Weight (lbs.):
 10½" x 9¾" x 11" | 24 lbs.



TB2

Tournament Bocce Set (107mm) – in Wood Box
 4 dark red balls (2 patterns), 4 dark green balls (2 patterns),
 57mm yellow jack ball, and official rulebook in a mahogany
 stained pine box.

\$139.95/EA

YOUR “ONE-STOP” SOURCE FOR AMERICA’S BASEBALL, SOFTBALL & SPORTS SURFACES & SUPPLIES!

PRICES SUBJECT TO CHANGE & AVAILABILITY PLUS SHIPPING | VOLUME DISCOUNTS AVAILABLE | COOPERATIVE PURCHASING CONTRACT PRICING FOR 50 STATES

Partac Peat Corporation – Item Price Schedule
Athletic Equipment & Supplies BID# ESCNJ 17/18-31 Effective 5/9/2018 - 5/8/2022

Bidding Company Name:				Partac Peat Corporation		Catalog Name:		2 - Bocce Court Surfacing					No.
No.	Product Category	Beam Clay Catalog Section #	Page#	Product Description	Manufacturer	Vendor SKU	Unit of Measure	Catalog List Price	Bid Discount Percentage	Discount Amt.	Net Effective Bid Price	Comments	No.
1	Other: Bocce Court Surfacing	2	4	Bocce Court Clay - Red (Extra Firm) - Bulk - F.O.B. NJ - BC-R-XF-BU	Partac Peat Corporation	BC-R-XF-BU	TON	\$ 135.000	5.0%	\$ 6.750	\$ 128.250	+ shipping - see freight notes	1
2	Other: Bocce Court Surfacing	2	4	Bocce Court Clay - Red (Extra Firm) - up to 50 (50 lb.) bags/pallet - F.O.B. NJ - BC-R-XF-BG	Partac Peat Corporation	BC-R-XF-BG	50 LB BAG	\$ 10.500	5.0%	\$ 0.525	\$ 9.975	+ shipping - see freight notes	2
3	Other: Bocce Court Surfacing	2	4	Bocce Court Clay - Orange (Extra Firm) - Bulk - F.O.B. NJ - BC-O-XF-BU	Partac Peat Corporation	BC-O-XF-BU	TON	\$ 125.000	5.0%	\$ 6.250	\$ 118.750	+ shipping - see freight notes	3
4	Other: Bocce Court Surfacing	2	4	Bocce Court Clay - Orange (Extra Firm) - up to 50 (50 lb.) bags/pallet - F.O.B. NJ - BC-O-XF-BG	Partac Peat Corporation	BC-O-XF-BG	50 LB BAG	\$ 9.500	5.0%	\$ 0.475	\$ 9.025	+ shipping - see freight notes	4
5	Other: Bocce Court Surfacing	2	4	Bocce Court Clay - Brown (Extra Firm) - Bulk - F.O.B. NJ - BC-B-XF-BU	Partac Peat Corporation	BC-B-XF-BU	TON	\$ 125.000	5.0%	\$ 6.250	\$ 118.750	+ shipping - see freight notes	5
6	Other: Bocce Court Surfacing	2	4	Bocce Court Clay - Brown (Extra Firm) - up to 50 (50 lb.) bags/pallet - F.O.B. NJ - BC-B-XF-BG	Partac Peat Corporation	BC-B-XF-BG	50 LB BAG	\$ 9.500	5.0%	\$ 0.475	\$ 9.025	+ shipping - see freight notes	6
7	Other: Bocce Court Surfacing	2	4	Bocce Court Clay - Grey (Medium Firm) - Bulk - F.O.B. NJ - BC-G-MF-BU	Partac Peat Corporation	BC-G-MF-BU	TON	\$ 115.000	5.0%	\$ 5.750	\$ 109.250	+ shipping - see freight notes	7
8	Other: Bocce Court Surfacing	2	4	Bocce Court Clay - Grey (Medium Firm) - up to 50 (50 lb.) bags/pallet - F.O.B. NJ - BC-G-MF-BG	Partac Peat Corporation	BC-G-MF-BG	50 LB BAG	\$ 7.500	5.0%	\$ 0.375	\$ 7.125	+ shipping - see freight notes	8
9	Other: Bocce Court Surfacing	2	4	Bocce Court Clay - Tan (Medium Firm) - Bulk - F.O.B. NJ - BC-T-MF-BU	Partac Peat Corporation	BC-T-MF-BU	TON	\$ 115.000	5.0%	\$ 5.750	\$ 109.250	+ shipping - see freight notes	9
10	Other: Bocce Court Surfacing	2	4	Bocce Court Clay - Tan (Medium Firm) - up to 50 (50 lb.) bags/pallet - F.O.B. NJ - BC-T-MF-BG	Partac Peat Corporation	BC-T-MF-BG	50 LB BAG	\$ 7.500	5.0%	\$ 0.375	\$ 7.125	+ shipping - see freight notes	10
11	Other: Bocce Court Surfacing	2	4	Bocce Court Clay - Orange (Medium Firm) - Bulk - F.O.B. NJ - BC-O-MF-BU	Partac Peat Corporation	BC-O-MF-BU	TON	\$ 125.000	5.0%	\$ 6.250	\$ 118.750	+ shipping - see freight notes	11
12	Other: Bocce Court Surfacing	2	4	Bocce Court Clay - Orange (Medium Firm) - up to 50 (50 lb.) bags/pallet - F.O.B. NJ - BC-O-MF-BG	Partac Peat Corporation	BC-O-MF-BG	50 LB BAG	\$ 9.500	5.0%	\$ 0.475	\$ 9.025	+ shipping - see freight notes	12
13	Other: Bocce Court Surfacing	2	4	Red Slate Top-Dressing - Bulk - F.O.B. NJ - RSTD-BU	Regional Plant	RSTD-BU	TON	\$ 125.000	5.0%	\$ 6.250	\$ 118.750	+ shipping - see freight notes	13
14	Other: Bocce Court Surfacing	2	4	Red Slate Top-Dressing - up to 50 (50 lb.) bags/pallet - F.O.B. NJ - RSTD-BG	Regional Plant	RSTD-BG	50 LB BAG	\$ 8.750	5.0%	\$ 0.438	\$ 8.313	+ shipping - see freight notes	14
15	Other: Bocce Court Surfacing	2	4	Red Brick Dust Top-Dressing - Bulk - F.O.B. NJ - RDBD-BU	Regional Plant	RDBD-BU	TON	\$ 165.000	5.0%	\$ 8.250	\$ 156.750	+ shipping - see freight notes	15
16	Other: Bocce Court Surfacing	2	4	Red Brick Dust Top-Dressing - up to 50 (50 lb.) bags/pallet - F.O.B. NJ - RDBD-BG	Regional Plant	RDBD-BG	50 LB BAG	\$ 8.950	5.0%	\$ 0.448	\$ 8.503	+ shipping - see freight notes	16
17	Other: Bocce Court Surfacing	2	4	Magnesium Chloride Flakes 50 (50 lb. bags)/pallet - F.O.B. NJ - MAG-FLAKES	Schoenburg	MAG-FLAKES	50 LB BAG	\$ 22.950	5.0%	\$ 1.148	\$ 21.803	+ shipping - see freight notes	17
18	Other: Bocce Court Surfacing	2	4	Magnesium Chloride Pellets 48 (50 lb. bags)/pallet - F.O.B. NJ - MAG-PELLETS	Schoenburg	MAG-PELLETS	50 LB BAG	\$ 31.950	5.0%	\$ 1.598	\$ 30.353	+ shipping - see freight notes	18
19	Other: Bocce Court Surfacing	2	4	Calcium Chloride Flakes 55 (50 lb. bags)/pallet - F.O.B. NJ - CC-FLAKES	Schoenburg	CC-FLAKES	50 LB BAG	\$ 20.950	5.0%	\$ 1.048	\$ 19.903	+ shipping - see freight notes	19
20	Other: Bocce Court Surfacing	2	4	Calcium Chloride Pellets 55 (50 lb. bags)/pallet - F.O.B. NJ - CC-PELLETS	Schoenburg	CC-PELLETS	50 LB BAG	\$ 22.950	5.0%	\$ 1.148	\$ 21.803	+ shipping - see freight notes	20
21	Other: Bocce Court Surfacing	2	4	FULL OR PARTIAL PALLETS: PALLET & COVER CHARGES FROM NJ - NJ-PALLET	Partac Peat Corporation	NJ-PALLET	EACH	\$ 6.500	5.0%	\$ 0.325	\$ 6.175	+ shipping - see freight notes	21
22	Other: Bocce Court Surfacing	2	4	MIDWEST & SOUTH NATURAL BOCCÉ COURT CLAY - Extra Firm Red/Brown - one ton bulk bags - F.O.B. Regional Plant - MW-RB-BB	Regional Plant	MW-RB-BB	2000 LB BAG	\$ 325.000	5.0%	\$ 16.250	\$ 308.750	+ shipping - see freight notes	22
23	Other: Bocce Court Surfacing	2	4	WEST COAST NATURAL BOCCÉ COURT CLAY - Extra Firm Red on-ton bulk bags - F.O.B. Regional Plant - WC-RB-BB	Regional Plant	WC-RB-BB	2000 LB BAG	\$ 265.000	5.0%	\$ 13.250	\$ 251.750	+ shipping - see freight notes	23
24	Other: Bocce Court Surfacing	2	4	RED LAVA DUST TOP-DRESSING - 1.5 CY bulk bags - F.O.B. Regional Plant - LAVADUST-CYB	Regional Plant	LAVADUST-CYB	1.5 CY BAG	\$ 250.000	5.0%	\$ 12.500	\$ 237.500	+ shipping - see freight notes	24
25	Other: Bocce Court Surfacing	2	4	POLYMERIZED CLAY - No water used to install or maintain - repels water yet stays firm & resilient Extra Firm Red/Brown, up to 40 (50 lb.) bags/pallet #HT-AZ-BG	Regional Plant	HT-AZ-BG	50 LB BAG	\$ 18.500	5.0%	\$ 0.925	\$ 17.575	+ shipping - see freight notes	25
26	Other: Bocce Court Surfacing	2	4	POLYMERIZED CLAY - No water used to install or maintain - repels water yet stays firm & resilient Extra Firm Red/Brown, up to 40 (50 lb.) bags/pallet #HT-NJ-BG	Regional Plant	HT-NJ-BG	50 LB BAG	\$ 28.500	5.0%	\$ 1.425	\$ 27.075	+ shipping - see freight notes	26
27	Other: Bocce Court Surfacing	2	4	POLYMERIZED TOP-DRESSING - One ton bulk bag. #HT-TD-AZ-BG	Regional Plant	HT-TD-AZ-BG	2000 LB BAG	\$ 365.000	5.0%	\$ 18.250	\$ 346.750	+ shipping - see freight notes	27
28	Other: Bocce Court Surfacing	2	4	POLYMERIZED TOP-DRESSING - One ton bulk bag. #HT-TD-NJ-BG	Regional Plant	HT-TD-NJ-BG	2000 LB BAG	\$ 725.000	5.0%	\$ 36.250	\$ 688.750	+ shipping - see freight notes	28
29	Other: Bocce Court Surfacing	2	4	HAR-TRU - Green 35 (80 lb. bags)/pallet - F.O.B. NJ - TCMHT8014-NJ	Hartru	TCMHT8014-NJ	80 LB BAG	\$ 13.450	5.0%	\$ 0.673	\$ 12.778	+ shipping - see freight notes	29
30	Other: Bocce Court Surfacing	2	4	HAR-TRU - Green 35 (80 lb. bags)/pallet - F.O.B. VA - Full Pallets Only - TCMHT8014-VA	Hartru	TCMHT8014-VA	80 LB BAG	\$ 9.500	5.0%	\$ 0.475	\$ 9.025	+ shipping - see freight notes	30
31	Other: Bocce Court Surfacing	2	4	HAR-TRU - Green 56 (50 lb. bags)/pallet - F.O.B. NJ - TCMHT5014-NJ	Hartru	TCMHT5014-NJ	50 LB BAG	\$ 8.950	5.0%	\$ 0.448	\$ 8.503	+ shipping - see freight notes	31
32	Other: Bocce Court Surfacing	2	4	HAR-TRU - Green 56 (50 lb. bags)/pallet - F.O.B. VA - Full Pallets Only - TCMHT5014-VA	Hartru	TCMHT5014-VA	50 LB BAG	\$ 6.440	5.0%	\$ 0.322	\$ 6.118	+ shipping - see freight notes	32

Bidding Company Name:				Partac Peat Corporation		Catalog Name:		2 - Bocce Court Surfacing					No.
No.	Product Category	Beam Clay Catalog #	Page#	Product Description	Manufacturer	Vendor SKU	Unit of Measure	Catalog List Price	Bid Discount Percentage	Discount Amt.	Net Effective Bid Price	Comments	No.
33	Other: Bocce Court Surfacing	2	4	HAR-TRU - Green 2,000 lb. Bulk Bags - F.O.B. NJ - TCMHT2000-NJ	Hartru	TCMHT2000-NJ	2000 LB BAG	\$ 385.000	5.0%	\$ 19.250	\$ 365.750	+ shipping - see freight notes	33
34	Other: Bocce Court Surfacing	2	4	HAR-TRU - Green 2,000 lb. Bulk Bags - F.O.B. VA - Full Pallets Only - TCMHT2000-VA	Hartru	TCMHT2000-VA	2000 LB BAG	\$ 270.850	5.0%	\$ 13.543	\$ 257.308	+ shipping - see freight notes	34
35	Other: Bocce Court Surfacing	2	4	HAR-TRU - Green 2,500 lb. Bulk Bags - F.O.B. NJ - TCMHT2500-NJ	Hartru	TCMHT2500-NJ	2500 LB BAG	\$ 455.000	5.0%	\$ 22.750	\$ 432.250	+ shipping - see freight notes	35
36	Other: Bocce Court Surfacing	2	4	HAR-TRU - Green 2,500 lb. Bulk Bags - F.O.B. VA - Full Pallets Only - TCMHT2500-VA	Hartru	TCMHT2500-VA	2500 LB BAG	\$ 332.050	5.0%	\$ 16.603	\$ 315.448	+ shipping - see freight notes	36
37	Other: Bocce Court Surfacing	2	4	HAR-TRU - Green 2,800 lb. Bulk Bags - F.O.B. NJ - TCMHT2800-NJ	Hartru	TCMHT2800-NJ	2800 LB BAG	\$ 496.000	5.0%	\$ 24.800	\$ 471.200	+ shipping - see freight notes	37
38	Other: Bocce Court Surfacing	2	4	HAR-TRU - Green 2,800 lb. Bulk Bags - F.O.B. VA - Full Pallets Only - TCMHT2800-VA	Hartru	TCMHT2800-VA	2800 LB BAG	\$ 353.800	5.0%	\$ 17.690	\$ 336.110	+ shipping - see freight notes	38
39	Other: Bocce Court Surfacing	2	4	Magnesium Chloride Flakes - 48 (55 lb. bags)/pallet - F.O.B. VA - Full Pallets Only - SOLMAGTCM	Hartru	SOLMAGTCM	55 LB BAG	\$ 25.000	5.0%	\$ 1.250	\$ 23.750	+ shipping - see freight notes	39
40	Other: Bocce Court Surfacing	2	4	Calcium Chloride Flakes - 48 (55 lb. bags)/pallet - F.O.B. VA - Full Pallets Only - SOLCALTCM	Hartru	SOLCALTCM	55 LB BAG	\$ 25.000	5.0%	\$ 1.250	\$ 23.750	+ shipping - see freight notes	40
41	Other: Bocce Court Surfacing	2	4	NORTHEAST - Green 35 (80 lb. bags)/pallet - F.O.B. NJ - NE-G80-NJ	Hadeka	NE-G80-NJ	80 LB BAG	\$ 9.750	5.0%	\$ 0.488	\$ 9.263	+ shipping - see freight notes	41
42	Other: Bocce Court Surfacing	2	4	NORTHEAST - Green 35 (80 lb. bags)/pallet - F.O.B. VT - Full Pallets Only - NE-G80-VT	Hadeka	NE-G80-VT	80 LB BAG	\$ 6.950	5.0%	\$ 0.348	\$ 6.603	+ shipping - see freight notes	42
43	Other: Bocce Court Surfacing	2	4	NORTHEAST - Green 48 (50 lb. bags)/pallet - F.O.B. NJ	Hadeka	NE-G50-NJ	50 LB BAG	\$ 6.500	5.0%	\$ 0.325	\$ 6.175	+ shipping - see freight notes	43
44	Other: Bocce Court Surfacing	2	4	NORTHEAST - Green 48 (50 lb. bags)/pallet - F.O.B. VT - Full Pallets Only - NE-G50-NJ	Hadeka	NE-G50-VT	50 LB BAG	\$ 4.750	5.0%	\$ 0.238	\$ 4.513	+ shipping - see freight notes	44
45	Other: Bocce Court Surfacing	2	4	NORTHEAST - Green 2,000 lb. Bulk Bags - F.O.B. NJ - NE-GBB-NJ	Hadeka	NE-GBB-NJ	2000 LB BAG	\$ 265.000	5.0%	\$ 13.250	\$ 251.750	+ shipping - see freight notes	45
46	Other: Bocce Court Surfacing	2	4	NORTHEAST - Green 2,000 lb. Bulk Bags - F.O.B. VT - NE-GBB-VT	Hadeka	NE-GBB-VT	2000 LB BAG	\$ 195.000	5.0%	\$ 9.750	\$ 185.250	+ shipping - see freight notes	46
47	Other: Bocce Court Surfacing	2	4	NORTHEAST - Red 35 (80 lb. bags)/pallet - F.O.B. NJ - NE-R80-NJ	Hadeka	NE-R80-NJ	80 LB BAG	\$ 12.050	5.0%	\$ 0.603	\$ 11.448	+ shipping - see freight notes	47
48	Other: Bocce Court Surfacing	2	4	NORTHEAST - Red 35 (80 lb. bags)/pallet - F.O.B. VT - Full Pallets Only - NE-R80-VT	Hadeka	NE-R80-VT	80 LB BAG	\$ 9.250	5.0%	\$ 0.463	\$ 8.788	+ shipping - see freight notes	48
49	Other: Bocce Court Surfacing	2	4	NORTHEAST - Red 2,500 lb. Bulk Bag - F.O.B. NJ - NE-RBB-NJ	Hadeka	NE-RBB-NJ	2500 LB BAG	\$ 315.000	5.0%	\$ 15.750	\$ 299.250	+ shipping - see freight notes	49
50	Other: Bocce Court Surfacing	2	4	NORTHEAST - Red 2,500 lb. Bulk Bag - F.O.B. VT - NE-RBB-VT	Hadeka	NE-RBB-VT	2500 LB BAG	\$ 245.000	5.0%	\$ 12.250	\$ 232.750	+ shipping - see freight notes	50
51	Other: Bocce Court Surfacing	2	4	Magnesium Chloride Flakes 48 (50 lb. bags)/pallet - F.O.B. VT - Full Pallets Only - NE-MAGFLK-VT	Hadeka	NE-MAGFLK-VT	50 LB BAG	\$ 19.500	5.0%	\$ 0.975	\$ 18.525	+ shipping - see freight notes	51
52	Other: Bocce Court Surfacing	2	8	Rubber Curbing - 4" High x 4" Wide x 6' Long #RC-4x4x6	RubbeRecycle	RC-4x4x6	PIECE	\$ 35.000	5.0%	\$ 1.750	\$ 33.250	+ shipping - see freight notes	52
53	Other: Bocce Court Surfacing	2	8	Rubber Curbing - 6" High x 4" Wide x 6' Long #RC-6x4x6	RubbeRecycle	RC-6x4x6	PIECE	\$ 65.000	5.0%	\$ 3.250	\$ 61.750	+ shipping - see freight notes	53
54	Other: Bocce Court Surfacing	2	8	Rubber Curbing - 8" High x 4" Wide x 6' Long #RC-8x4x6	RubbeRecycle	RC-8x4x6	PIECE	\$ 80.000	5.0%	\$ 4.000	\$ 76.000	+ shipping - see freight notes	54
55	Other: Bocce Court Surfacing	2	8	Rubber Curbing - 4" High x 3" Wide x 6' Long #RC-4X3X6	RubbeRecycle	RC-4X3X6	PIECE	\$ 30.000	5.0%	\$ 1.500	\$ 28.500	+ shipping - see freight notes	55
56	Other: Bocce Court Surfacing	2	8	Rubber Curbing - 4" High x 3" Wide x 4' Long #RC-4x3x4	RubbeRecycle	RC-4x3x4	PIECE	\$ 20.000	5.0%	\$ 1.000	\$ 19.000	+ shipping - see freight notes	56
57	Other: Bocce Court Surfacing	2	10	BLACK "BOUNCE BOARD" RUBBER - 3/8" x 4" - #BBB38X4	Price Rubber	BBB38X4	LF	\$ 3.150	5.0%	\$ 0.158	\$ 2.993	+ shipping - see freight notes	57
58	Other: Bocce Court Surfacing	2	10	BLACK "BOUNCE BOARD" RUBBER - 1/2 x 4" - #BBB12X4	Price Rubber	BBB12X4	LF	\$ 4.150	5.0%	\$ 0.208	\$ 3.943	+ shipping - see freight notes	58
59	Other: Bocce Court Surfacing	2	10	BLACK "BOUNCE BOARD" RUBBER - 3/8" x 6" - #BBB38X6	Price Rubber	BBB38X6	LF	\$ 4.750	5.0%	\$ 0.238	\$ 4.513	+ shipping - see freight notes	59
60	Other: Bocce Court Surfacing	2	10	BLACK "BOUNCE BOARD" RUBBER - 1/2" x 6" - #BBB12X6	Price Rubber	BBB12X6	LF	\$ 6.350	5.0%	\$ 0.318	\$ 6.033	+ shipping - see freight notes	60
61	Other: Bocce Court Surfacing	2	10	BLACK "BOUNCE BOARD" RUBBER - 3/8" x 8" - #BBB38X8	Price Rubber	BBB38X8	LF	\$ 6.350	5.0%	\$ 0.318	\$ 6.033	+ shipping - see freight notes	61
62	Other: Bocce Court Surfacing	2	10	BLACK "BOUNCE BOARD" RUBBER - 1/2" x 8" - #BBB12X8	Price Rubber	BBB12X8	LF	\$ 8.450	5.0%	\$ 0.423	\$ 8.028	+ shipping - see freight notes	62
63	Other: Bocce Court Surfacing	2	10	BLACK "BOUNCE BOARD" RUBBER - 3/8" x 10" - #BBB38X10	Price Rubber	BBB38X10	LF	\$ 7.850	5.0%	\$ 0.393	\$ 7.458	+ shipping - see freight notes	63
64	Other: Bocce Court Surfacing	2	10	BLACK "BOUNCE BOARD" RUBBER - 1/2" x 10" - #BBB12X10	Price Rubber	BBB12X10	LF	\$ 10.500	5.0%	\$ 0.525	\$ 9.975	+ shipping - see freight notes	64
65	Other: Bocce Court Surfacing	2	10	BLACK "BOUNCE BOARD" RUBBER - 3/8" x 10" - #BBB38X12	Price Rubber	BBB38X12	LF	\$ 9.500	5.0%	\$ 0.475	\$ 9.025	+ shipping - see freight notes	65
66	Other: Bocce Court Surfacing	2	10	BLACK "BOUNCE BOARD" RUBBER - 1/2" x 10" - #BBB12X12	Price Rubber	BBB12X12	LF	\$ 12.600	5.0%	\$ 0.630	\$ 11.970	+ shipping - see freight notes	66
67	Other: Bocce Court Surfacing	2	11	BOCCE COURT - RIGID DRAG MAT - 3' Wide x 3 1/2' Long - RDM-3x3.5	Partac Peat Corporation	RDM-3x3.5	EACH	\$ 175.000	5.0%	\$ 8.750	\$ 166.250	+ shipping - see freight notes	67

Bidding Company Name:				Partac Peat Corporation		Catalog Name:		2 - Bocce Court Surfacing					No.
No.	Product Category	Beam Clay Catalog #	Page#	Product Description	Manufacturer	Vendor SKU	Unit of Measure	Catalog List Price	Bid Discount Percentage	Discount Amt.	Net Effective Bid Price	Comments	No.
68	Other: Bocce Court Surfacing	2	11	BOCCE COURT - RIGID DRAG MAT - 4' Wide x 3 1/2' Long- RDM-4x3.5	Partac Peat Corporation	RDM-4x3.5	EACH	\$ 205.000	5.0%	\$ 10.250	\$ 194.750	+ shipping - see freight notes	68
69	Other: Bocce Court Surfacing	2	11	BOCCE COURT - RIGID DRAG MAT - 5' Wide x 3 1/2' Long- RDM-5x3.5	Partac Peat Corporation	RDM-5x3.5	EACH	\$ 245.000	5.0%	\$ 12.250	\$ 232.750	+ shipping - see freight notes	69
70	Other: Bocce Court Surfacing	2	11	BOCCE COURT - RIGID DRAG MAT - 6' Wide x 3 1/2' Long - RDM-6x3.5	Partac Peat Corporation	RDM-6x3.5	EACH	\$ 295.000	5.0%	\$ 14.750	\$ 280.250	+ shipping - see freight notes	70
71	Other: Bocce Court Surfacing	2	11	HAND ROLLER - 18" Diameter x 24" Wide, 14 gauge (1/12") steel, bronze bushings #85750	Midwest	85750	EACH	\$ 325.000	5.0%	\$ 16.250	\$ 308.750	+ shipping - see freight notes	71
72	Other: Bocce Court Surfacing	2	11	AUSSIE CLEAN SWEEP - AUS8 8' Model	Hartru	AUS8	EACH	\$ 499.000	5.0%	\$ 24.950	\$ 474.050	+ shipping - see freight notes	72
73	Other: Bocce Court Surfacing	2	11	AUSSIE CLEAN SWEEP - AUS4 4' Model	Hartru	AUS4	EACH	\$ 333.000	5.0%	\$ 16.650	\$ 316.350	+ shipping - see freight notes	73
74	Other: Bocce Court Surfacing	2	12	YANKEE BOCCE COURT SCARIFIER/T-LUTES - 0624T 24" Blade	NEW ENGLAND	0624T	EACH	\$ 59.950	5.0%	\$ 2.998	\$ 56.953	+ shipping - see freight notes	74
75	Other: Bocce Court Surfacing	2	12	YANKEE BOCCE COURT SCARIFIER/T-LUTES - 0630T 30" Blade	NEW ENGLAND	0630T	EACH	\$ 61.950	5.0%	\$ 3.098	\$ 58.853	+ shipping - see freight notes	75
76	Other: Bocce Court Surfacing	2	12	YANKEE BOCCE COURT SCARIFIER/T-LUTES - 0636T 36" Blade	NEW ENGLAND	0636T	EACH	\$ 62.950	5.0%	\$ 3.148	\$ 59.803	+ shipping - see freight notes	76
77	Other: Bocce Court Surfacing	2	12	YANKEE BOCCE COURT SCARIFIER/T-LUTES - 0642T 42" Blade	NEW ENGLAND	0642T	EACH	\$ 71.950	5.0%	\$ 3.598	\$ 68.353	+ shipping - see freight notes	77
78	Other: Bocce Court Surfacing	2	12	YANKEE BOCCE COURT SCARIFIER/T-LUTES - 0648T 48" Blade	NEW ENGLAND	0648T	EACH	\$ 74.950	5.0%	\$ 3.748	\$ 71.203	+ shipping - see freight notes	78
79	Other: Bocce Court Surfacing	2	12	YANKEE STRAIGHT TOOTH RAKES WITH STRAIGHT EDGES - 0914 14" Blade	NEW ENGLAND	0914	EACH	\$ 45.950	5.0%	\$ 2.298	\$ 37.952	+ shipping - see freight notes	79
80	Other: Bocce Court Surfacing	2	12	YANKEE STRAIGHT TOOTH RAKES WITH STRAIGHT EDGES - 0924 24" Blade	NEW ENGLAND	0924	EACH	\$ 60.950	5.0%	\$ 3.048	\$ 57.903	+ shipping - see freight notes	80
81	Other: Bocce Court Surfacing	2	12	YANKEE STRAIGHT TOOTH RAKES WITH STRAIGHT EDGES - 0930 30" Blade	NEW ENGLAND	0930	EACH	\$ 63.950	5.0%	\$ 3.198	\$ 60.753	+ shipping - see freight notes	81
82	Other: Bocce Court Surfacing	2	12	YANKEE STRAIGHT TOOTH RAKES WITH STRAIGHT EDGES - 0936 36" Blade	NEW ENGLAND	0936	EACH	\$ 67.950	5.0%	\$ 3.398	\$ 64.553	+ shipping - see freight notes	82
83	Other: Bocce Court Surfacing	2	12	YANKEE STRAIGHT TOOTH RAKES WITH STRAIGHT EDGES - 0942 42" Blade	NEW ENGLAND	0942	EACH	\$ 75.950	5.0%	\$ 3.798	\$ 72.153	+ shipping - see freight notes	83
84	Other: Bocce Court Surfacing	2	12	YANKEE STRAIGHT TOOTH RAKES WITH STRAIGHT EDGES - 0948 48" Blade	NEW ENGLAND	0948	EACH	\$ 79.950	5.0%	\$ 3.998	\$ 75.953	+ shipping - see freight notes	84
85	Other: Bocce Court Surfacing	2	12	YANKEE OPTIONAL 84" Long Handle for Any Rake - YAN-HANDLE	NEW ENGLAND	YAN-HANDLE	EACH	\$ 9.900	5.0%	\$ 0.495	\$ 9.405	+ shipping - see freight notes	85
86	Other: Bocce Court Surfacing	2	12	YANKEE OPTIONAL Double Braces for 42" or 48" Rakes - YAN-DB	NEW ENGLAND	YAN-DB	EACH	\$ 15.000	5.0%	\$ 0.750	\$ 14.250	+ shipping - see freight notes	86
87	Other: Bocce Court Surfacing	2	12	MIDWEST BOCCE COURT SCARIFIER/LUTE - 56923 24" Blade	MIDWEST	56923	EACH	\$ 52.950	5.0%	\$ 2.648	\$ 50.303	+ shipping - see freight notes	87
88	Other: Bocce Court Surfacing	2	12	MIDWEST BOCCE COURT SCARIFIER/LUTE - 56924 24" Blade	MIDWEST	56924	EACH	\$ 57.950	5.0%	\$ 2.898	\$ 55.053	+ shipping - see freight notes	88
89	Other: Bocce Court Surfacing	2	12	MIDWEST BOCCE COURT SCARIFIER/LUTE - 56929 30" Blade	MIDWEST	56929	EACH	\$ 55.950	5.0%	\$ 2.798	\$ 53.153	+ shipping - see freight notes	89
90	Other: Bocce Court Surfacing	2	12	MIDWEST BOCCE COURT SCARIFIER/LUTE - 56930 30" Blade	MIDWEST	56930	EACH	\$ 60.950	5.0%	\$ 3.048	\$ 57.903	+ shipping - see freight notes	90
91	Other: Bocce Court Surfacing	2	12	MIDWEST BOCCE COURT SCARIFIER/LUTE - 56935 36" Blade	MIDWEST	56935	EACH	\$ 58.950	5.0%	\$ 2.948	\$ 56.003	+ shipping - see freight notes	91
92	Other: Bocce Court Surfacing	2	12	MIDWEST BOCCE COURT SCARIFIER/LUTE - 56936 36" Blade	MIDWEST	56936	EACH	\$ 64.950	5.0%	\$ 3.248	\$ 61.703	+ shipping - see freight notes	92
93	Other: Bocce Court Surfacing	2	12	MIDWEST BOCCE COURT SCARIFIER/LUTE - 52936 36" Blade	MIDWEST	52936	EACH	\$ 60.950	5.0%	\$ 3.048	\$ 57.903	+ shipping - see freight notes	93
94	Other: Bocce Court Surfacing	2	12	MIDWEST BOCCE COURT SCARIFIER/LUTE - 52037 36" Blade	MIDWEST	52037	EACH	\$ 66.950	5.0%	\$ 3.348	\$ 63.603	+ shipping - see freight notes	94
95	Other: Bocce Court Surfacing	2	12	MIDWEST BOCCE COURT SCARIFIER/LUTE - 52038 36" Blade	MIDWEST	52038	EACH	\$ 67.950	5.0%	\$ 3.398	\$ 64.553	+ shipping - see freight notes	95
96	Other: Bocce Court Surfacing	2	12	MIDWEST BOCCE COURT RAKE - 12024 24" Blade	MIDWEST	12024	EACH	\$ 64.950	5.0%	\$ 3.248	\$ 61.703	+ shipping - see freight notes	96
97	Other: Bocce Court Surfacing	2	12	MIDWEST BOCCE COURT RAKE - 12030 30" Blade	MIDWEST	12030	EACH	\$ 68.950	5.0%	\$ 3.448	\$ 65.503	+ shipping - see freight notes	97
98	Other: Bocce Court Surfacing	2	12	MIDWEST BOCCE COURT RAKE - 12036 36" Blade	MIDWEST	12036	EACH	\$ 70.950	5.0%	\$ 3.548	\$ 67.403	+ shipping - see freight notes	98
99	Other: Bocce Court Surfacing	2	12	MIDWEST BOCCE COURT RAKE - 12042 42" Blade	MIDWEST	12042	EACH	\$ 77.950	5.0%	\$ 3.898	\$ 74.053	+ shipping - see freight notes	99
100	Other: Bocce Court Surfacing	2	12	MIDWEST BOCCE COURT RAKE - 12048 48" Blade	MIDWEST	12048	EACH	\$ 82.950	5.0%	\$ 4.148	\$ 78.803	+ shipping - see freight notes	100
101	Other: Bocce Court Surfacing	2	12	LEE SCARIFIER/T-LUTES - SCR04 30"	HARTRU	SCR04	EACH	\$ 70.000	5.0%	\$ 3.500	\$ 66.500	+ shipping - see freight notes	101
102	Other: Bocce Court Surfacing	2	12	LEE SCARIFIER/T-LUTES - SCR05 48"	HARTRU	SCR05	EACH	\$ 79.000	5.0%	\$ 3.950	\$ 75.050	+ shipping - see freight notes	102

Bidding Company Name:				Partac Peat Corporation		Catalog Name:		2 - Bocce Court Surfacing					No.
No.	Product Category	Beam Clay Catalog #	Page#	Product Description	Manufacturer	Vendor SKU	Unit of Measure	Catalog List Price	Bid Discount Percentage	Discount Amt.	Net Effective Bid Price	Comments	No.
103	Other: Bocce Court Surfacing	2	13	7' WIDE MAHOGANY BOCCÉ COURT BROOM WITH 3 ROWS OF 7" FIBER BRISTLES & 2 STEEL HANDLES #311-7	BRAUN	311-7	EACH	\$ 395.000	5.0%	\$ 19.750	\$ 375.250	+ shipping - see freight notes	103
104	Other: Bocce Court Surfacing	2	13	7' WIDE ALUMINUM BOCCÉ COURT BROOM WITH 3 ROWS OF 5-1/2" GREEN POLYPRO BRISTLES & TWO 4' ALUMINUM HANDLES WITH 20" CROSS PIECE #411-7	BRAUN	411-7	EACH	\$ 450.000	5.0%	\$ 22.500	\$ 427.500	+ shipping - see freight notes	104
105	Other: Bocce Court Surfacing	2	14	MIDWEST™ 7' WIDE MONSTER BROOM - with 4-1/2" bristles - #82084 Monster Drag Broom (Two-Row Bristles) - 82084	Midwest	82084	EACH	\$ 198.950	5.0%	\$ 9.948	\$ 189.003	+ shipping - see freight notes	105
106	Other: Bocce Court Surfacing	2	14	MIDWEST™ 7' WIDE MONSTER BROOM - with 4-1/2" bristles - #83084 Monster Drag Broom (Three-Row Bristles)	Midwest	83084	EACH	\$ 230.950	5.0%	\$ 11.548	\$ 219.403	+ shipping - see freight notes	106
107	Other: Bocce Court Surfacing	2	14	MIDWEST™ 7' WIDE MONSTER BROOM - #SP50067 7' Replacement Bristles (One Row)	Midwest	SP50067	EACH	\$ 42.950	5.0%	\$ 2.148	\$ 40.803	+ shipping - see freight notes	107
108	Other: Bocce Court Surfacing	2	14	MIDWEST BOCCÉ COURT SCARIFIER BROOM - #82384 7' Scarifier Broom (Two-Row Bristles)	Midwest	82384	EACH	\$ 252.950	5.0%	\$ 12.648	\$ 240.303	+ shipping - see freight notes	108
109	Other: Bocce Court Surfacing	2	14	MIDWEST BOCCÉ COURT SCARIFIER BROOM - #SP50067 7' Replacement Bristles (One Row)	Midwest	SP50067	EACH	\$ 42.950	5.0%	\$ 2.148	\$ 40.803	+ shipping - see freight notes	109
110	Other: Bocce Court Surfacing	2	14	MIDWEST™ 28" MAXIMUM-DUTY BROOM - #82928 28" Maximum-Duty Broom (Two-Row Bristles)	Midwest	82928	EACH	\$ 78.950	5.0%	\$ 3.948	\$ 75.003	+ shipping - see freight notes	110
111	Other: Bocce Court Surfacing	2	14	MIDWEST™ 28" MAXIMUM-DUTY BROOM - #83928 28" Maximum-Duty Broom (Three-Row Bristles)	Midwest	83928	EACH	\$ 88.950	5.0%	\$ 4.448	\$ 84.503	+ shipping - see freight notes	111
112	Other: Bocce Court Surfacing	2	14	MIDWEST™ 28" MAXIMUM-DUTY BROOM - #SP50068 28" Replacement Bristles (One Row)	Midwest	SP50068	EACH	\$ 12.950	5.0%	\$ 0.648	\$ 12.303	+ shipping - see freight notes	112
113	Other: Bocce Court Surfacing	2	14	28" SCARIFIER BROOM - #82328 28" Scarifier Broom (Two-Row Bristles)	Midwest	82328	EACH	\$ 110.950	5.0%	\$ 5.548	\$ 105.403	+ shipping - see freight notes	113
114	Other: Bocce Court Surfacing	2	14	28" SCARIFIER BROOM - #SP50068 28" Replacement Bristles (One Row)	Midwest	SP50068	EACH	\$ 12.950	5.0%	\$ 0.648	\$ 12.303	+ shipping - see freight notes	114
115	Other: Bocce Court Surfacing	2	15	MIDWEST Non-Absorbent Roller Squeegee - 70924 24" Wide	Midwest	70924	EACH	\$ 136.950	5.0%	\$ 6.848	\$ 130.103	+ shipping - see freight notes	115
116	Other: Bocce Court Surfacing	2	15	MIDWEST Non-Absorbent Roller Squeegee - 70936 36" Wide	Midwest	70936	EACH	\$ 155.950	5.0%	\$ 7.798	\$ 148.153	+ shipping - see freight notes	116
117	Other: Bocce Court Surfacing	2	15	MIDWEST Non-Absorbent Roller Squeegee - 70948 48" Wide	Midwest	70948	EACH	\$ 174.950	5.0%	\$ 8.748	\$ 166.203	+ shipping - see freight notes	117
118	Other: Bocce Court Surfacing	2	15	MIDWEST PVA Absorbent - 72036 36" Wide	Midwest	72036	EACH	\$ 158.950	5.0%	\$ 7.948	\$ 151.003	+ shipping - see freight notes	118
119	Other: Bocce Court Surfacing	2	15	MIDWEST Replacement Rollers - SA10047 24" Non Absorbent	Midwest	SA10047	EACH	\$ 56.950	5.0%	\$ 2.848	\$ 54.103	+ shipping - see freight notes	119
120	Other: Bocce Court Surfacing	2	15	MIDWEST Replacement Rollers - SA10048 36" Non Absorbent	Midwest	SA10048	EACH	\$ 70.950	5.0%	\$ 3.548	\$ 67.403	+ shipping - see freight notes	120
121	Other: Bocce Court Surfacing	2	15	MIDWEST Replacement Rollers - SA10049 48" Non Absorbent	Midwest	SA10049	EACH	\$ 84.950	5.0%	\$ 4.248	\$ 80.703	+ shipping - see freight notes	121
122	Other: Bocce Court Surfacing	2	15	MIDWEST Replacement Rollers - SA10051 36" PVA Absorbent	Midwest	SA10051	EACH	\$ 75.950	5.0%	\$ 3.798	\$ 72.153	+ shipping - see freight notes	122
123	Other: Bocce Court Surfacing	2	15	YANKEE® ROLLER SQUEEGEES NON-ABSORBANT (BLACK) - 0748 48" Replacement Roller	NEW ENGLAND	0748	EACH	\$ 45.000	5.0%	\$ 2.250	\$ 42.750	+ shipping - see freight notes	123
124	Other: Bocce Court Surfacing	2	15	YANKEE® ROLLER SQUEEGEES ABSORBANT (GREY) - 0724A 24" Wide	NEW ENGLAND	0724A	EACH	\$ 104.500	5.0%	\$ 5.225	\$ 99.275	+ shipping - see freight notes	124
125	Other: Bocce Court Surfacing	2	15	YANKEE® ROLLER SQUEEGEES ABSORBANT (GREY) - 0736A 36" Wide	NEW ENGLAND	0736A	EACH	\$ 114.500	5.0%	\$ 5.725	\$ 108.775	+ shipping - see freight notes	125
126	Other: Bocce Court Surfacing	2	15	YANKEE® ROLLER SQUEEGEES ABSORBANT (GREY) - 0748A 48" Replacement Roller	NEW ENGLAND	0748A	EACH	\$ 50.000	5.0%	\$ 2.500	\$ 47.500	+ shipping - see freight notes	126
127	Other: Bocce Court Surfacing	2	15	YANKEE® LITTER PICK - 0450	NEW ENGLAND	0450	EACH	\$ 17.500	5.0%	\$ 0.875	\$ 16.625	+ shipping - see freight notes	127
128	Other: Bocce Court Surfacing	2	15	YANKEE® LITTER PICK Replacement Points -0402	NEW ENGLAND	0402	EACH	\$ 5.950	5.0%	\$ 0.298	\$ 5.653	+ shipping - see freight notes	128
129	Other: Bocce Court Surfacing	2	16	COURT DEVIL JR. SCARIFIER - 146-3408	HARTRU	146-3408	EACH	\$ 1,250.000	5.0%	\$ 62.500	\$ 1,187.500	+ shipping - see freight notes	129
130	Other: Bocce Court Surfacing	2	16	COURT DEVIL SCARIFIER - 146-3409	HARTRU	146-3409	EACH	\$ 1,595.000	5.0%	\$ 79.750	\$ 1,515.250	+ shipping - see freight notes	130
131	Other: Bocce Court Surfacing	2	16	TRU-FLOW TOP-DRESSER - 124-3069 - 24" Hand Spreader	HARTRU	124-3069	EACH	\$ 950.000	5.0%	\$ 47.500	\$ 902.500	+ shipping - see freight notes	131
132	Other: Bocce Court Surfacing	2	16	TRU-FLOW TOP-DRESSER - 124-3065 - 36" Tow Spreader	HARTRU	124-3065	EACH	\$ 2,473.000	5.0%	\$ 123.650	\$ 2,349.350	+ shipping - see freight notes	132
133	Other: Bocce Court Surfacing	2	16	TRU-FLOW TOP-DRESSER - 124-3066 - 54" Tow Spreader	HARTRU	124-3066	EACH	\$ 2,894.000	5.0%	\$ 144.700	\$ 2,749.300	+ shipping - see freight notes	133
134	Other: Bocce Court Surfacing	2	17	BOCCÉ COURT SHOE BRUSH - 4042414	SPARTA	4042414	EACH	\$ 69.950	5.0%	\$ 3.498	\$ 66.453	+ shipping - see freight notes	134
135	Other: Bocce Court Surfacing	2	17	BOCCÉ COURT SHOE BRUSH - 4042514 - Repl. Brush - Sold Individually	SPARTA	4042514	EACH	\$ 12.950	5.0%	\$ 0.648	\$ 12.303	+ shipping - see freight notes	135
136	Other: Bocce Court Surfacing	2	17	THE TREAD BLASTER - 147-4000	HARTRU	147-4000	EACH	\$ 399.000	5.0%	\$ 19.950	\$ 379.050	+ shipping - see freight notes	136
137	Other: Bocce Court Surfacing	2	17	TENNIE TWO-STEP - SHOTTSWB - Tennie Two-Step with Brush	HARTRU	SHOTTSWB	EACH	\$ 220.000	5.0%	\$ 11.000	\$ 209.000	+ shipping - see freight notes	137

Bidding Company Name:				Partac Peat Corporation		Catalog Name:		2 - Bocce Court Surfacing					No.
No.	Product Category	Beam Clay Catalog #	Page#	Product Description	Manufacturer	Vendor SKU	Unit of Measure	Catalog List Price	Bid Discount Percentage	Discount Amt.	Net Effective Bid Price	Comments	No.
138	Other: Bocce Court Surfacing	2	17	TENNIE TWO-STEP - SHOTTS - Tennie Two-Step (without Brush)	HARTRU	SHOTTS	EACH	\$ 187.000	5.0%	\$ 9.350	\$ 177.650	+ shipping - see freight notes	138
139	Other: Bocce Court Surfacing	2	17	TENNIE TWO-STEP - SHOTTSBR - Brush attachment	HARTRU	SHOTTSBR	EACH	\$ 50.000	5.0%	\$ 2.500	\$ 47.500	+ shipping - see freight notes	139
140	Other: Bocce Court Surfacing	2	17	COURT MAID - SHOCMJ - Black 14 3/4" x 20" x 4"	HARTRU	SHOCMJ	EACH	\$ 372.500	5.0%	\$ 18.625	\$ 353.875	+ shipping - see freight notes	140
141	Other: Bocce Court Surfacing	2	17	HAR-TRU SHOE BRUSH - SHOSBR	HARTRU	SHOSBR	EACH	\$ 66.500	5.0%	\$ 3.325	\$ 63.175	+ shipping - see freight notes	141
142	Other: Bocce Court Surfacing	2	17	HAR-TRU SHOE BRUSH - SHOSBRBB Replacement Bottom Brush	HARTRU	SHOSBRBB	EACH	\$ 7.950	5.0%	\$ 0.398	\$ 7.553	+ shipping - see freight notes	142
143	Other: Bocce Court Surfacing	2	17	HAR-TRU SHOE BRUSH - SHOSBRBS Replacement Side Brush (set)	HARTRU	SHOSBRBS	SET	\$ 20.990	5.0%	\$ 1.050	\$ 19.941	+ shipping - see freight notes	143
144	Other: Bocce Court Surfacing	2	18	SYNTHETIC TURF FOR BOCCÉ COURTS - 25 oz. NYLON - 12' Stock Rolls - 5mm foam backing - Forest Green - PL30612W5MM	CP TURF	PL30612W5MM	SF	\$ 3.950	5.0%	\$ 0.198	\$ 3.753	+ shipping - see freight notes	144
145	Other: Bocce Court Surfacing	2	18	SYNTHETIC TURF FOR BOCCÉ COURTS - 36 oz. NYLON - 15' Stock Rolls - 1mm rubber backing - Forest Green - PL30815W1MM	CP TURF	PL30815W1MM	SF	\$ 3.850	5.0%	\$ 0.193	\$ 3.658	+ shipping - see freight notes	145
146	Other: Bocce Court Surfacing	2	17	SYNTHETIC TURF FOR BOCCÉ COURTS - 48 oz. NYLON - 15' Stock Rolls - 1mm rubber backing in Forest Green - PL30715W1MM	CP TURF	PL30715W1MM	SF	\$ 4.350	5.0%	\$ 0.218	\$ 4.133	+ shipping - see freight notes	146
147	Other: Bocce Court Surfacing	2	18	SYNTHETIC TURF FOR BOCCÉ COURTS - 24 oz. POLYPROPYLENE - 12' Stock Rolls - 5mm foam backing - Pine Green - PL35712W5MM	CP TURF	PL35712W5MM	SF	\$ 3.250	5.0%	\$ 0.163	\$ 3.088	+ shipping - see freight notes	147
148	Other: Bocce Court Surfacing	2	18	SYNTHETIC TURF FOR BOCCÉ COURTS - 24 oz. POLYPROPYLENE - 12' Stock Rolls - SilverBack Polyurethane, Pine Green - # PL35712WSB	CP TURF	PL35712WSB	SF	\$ 2.100	5.0%	\$ 0.105	\$ 1.995	+ shipping - see freight notes	148
149	Other: Bocce Court Surfacing	2	18	SYNTHETIC TURF FOR BOCCÉ COURTS - 36 oz. POLYPROPYLENE - 12' Stock Rolls - spring green or pine, 5mm foam with scrim - PL70512W5MM	CP TURF	PL70512W5MM	SF	\$ 3.750	5.0%	\$ 0.188	\$ 3.563	+ shipping - see freight notes	149
150	Other: Bocce Court Surfacing	2	18	SYNTHETIC TURF FOR BOCCÉ COURTS - 36 oz. POLYPROPYLENE - 12' Stock Rolls - spring green or pine, SilverBack polyurethane - PL70512WSB	CP TURF	PL70512WSB	SF	\$ 2.750	5.0%	\$ 0.138	\$ 2.613	+ shipping - see freight notes	150
151	Other: Bocce Court Surfacing	2	19	SYNTHETIC TURF FOR BOCCÉ COURTS - 36 oz. POLYPROPYLENE - 15' Stock Rolls - spring green or pine, 5mm foam with scrim - PL70515W5MM	CP TURF	PL70515W5MM	SF	\$ 3.750	5.0%	\$ 0.188	\$ 3.563	+ shipping - see freight notes	151
152	Other: Bocce Court Surfacing	2	18	SYNTHETIC TURF FOR BOCCÉ COURTS - 36 oz. POLYPROPYLENE - 15' Stock Rolls - spring green, SilverBack polyurethane - PL70515WSB	CP TURF	PL70515WSB	SF	\$ 2.750	5.0%	\$ 0.138	\$ 2.613	+ shipping - see freight notes	152
153	Other: Bocce Court Surfacing	2	18	SYNTHETIC TURF FOR BOCCÉ COURTS - 36 oz. POLYPROPYLENE - 15' Stock Rolls - spring green, 1mm rubber - PL70515W1MM	CP TURF	PL70515W1MM	SF	\$ 3.250	5.0%	\$ 0.163	\$ 3.088	+ shipping - see freight notes	153
154	Other: Bocce Court Surfacing	2	18	SYNTHETIC TURF FOR BOCCÉ COURTS - 36 oz. POLYPROPYLENE - 12' Stock Rolls - clay, red, white, blue, orange, yellow, purple, crimson, maroon, brown, navy, 5mm foam with scrim - PL70512WCSMM	CP TURF	PL70512WCSMM	SF	\$ 4.250	5.0%	\$ 0.213	\$ 4.038	+ shipping - see freight notes	154
155	Other: Bocce Court Surfacing	2	18	SYNTHETIC TURF FOR BOCCÉ COURTS - 36 oz. POLYPROPYLENE - 12' Stock Rolls - clay, red, white, blue, orange, yellow, black, purple, crimson, maroon, brown, navy, SilverBack polyurethane - PL70512WCSB	CP TURF	PL70512WCSB	SF	\$ 2.950	5.0%	\$ 0.148	\$ 2.803	+ shipping - see freight notes	155
156	Other: Bocce Court Surfacing	2	18	SYNTHETIC TURF FOR BOCCÉ COURTS 36 oz. POLYPROPYLENE - 12' Stock Rolls - purple, vegas gold, crimson, maroon, or navy 5mm foam #PL70512WCSMM	CP TURF	#PL70512WCSMM	SF	\$ 4.250	5.0%	\$ 0.213	\$ 4.038	+ shipping - see freight notes	156
157	Other: Bocce Court Surfacing	2	18	SYNTHETIC TURF FOR BOCCÉ COURTS 36 oz. POLYPROPYLENE - 12' Stock Rolls - clay, red, white, blue, orange, yellow, black or brown #PL70512WCSB	CP TURF	#PL70512WCSB	SF	\$ 2.900	5.0%	\$ 0.145	\$ 2.755	+ shipping - see freight notes	157
158	Other: Bocce Court Surfacing	2	18	SYNTHETIC TURF FOR BOCCÉ COURTS - 42 oz. POLYPROPYLENE - 15' Stock Rolls - 1mm rubber backing - Pine Green or Clay - PL70715WC1MM	CP TURF	PL70715WC1MM	SF	\$ 3.450	5.0%	\$ 0.173	\$ 3.278	+ shipping - see freight notes	158
159	Other: Bocce Court Surfacing	2	27	SYNTHETIC TURF INFILL - ROUNDED GREEN COLORED SAND - 12-20 Sieve, Green - 50 LB. BAG, F.O.B. GA - GA-STI-12-20-G	REGIONAL PLANT	GA-STI-12-20-G	50 LB BAG	\$ 25.000	5.0%	\$ 1.250	\$ 23.750	+ shipping - see freight notes	159
160	Other: Bocce Court Surfacing	2	27	SYNTHETIC TURF INFILL - ROUNDED GREEN COLORED SAND - 16-30 Sieve, Green/Black Blend - 50 LB. BAG, F.O.B. GA - GA-STI-16-30-GBB	REGIONAL PLANT	GA-STI-16-30-GBB	50 LB BAG	\$ 25.000	5.0%	\$ 1.250	\$ 23.750	+ shipping - see freight notes	160
161	Other: Bocce Court Surfacing	2	27	SYNTHETIC TURF INFILL - ROUNDED GREEN COLORED SAND - 30-50 Sieve, Green/Black Blend - 50 LB. BAG, F.O.B. GA - GA-STI-30-50-GBB	REGIONAL PLANT	GA-STI-30-50-GBB	50 LB BAG	\$ 25.000	5.0%	\$ 1.250	\$ 23.750	+ shipping - see freight notes	161
162	Other: Bocce Court Surfacing	2	27	SYNTHETIC TURF INFILL - ROUNDED COLORED SAND - 40-100 Sieve - 50 LB. BAG (UP TO 50 BAGS/PALLET), F.O.B. IL - IL-STI-40-100	REGIONAL PLANT	IL-STI-40-100	50 LB BAG	\$ 21.950	5.0%	\$ 1.098	\$ 20.853	+ shipping - see freight notes	162
163	Other: Bocce Court Surfacing	2	27	SYNTHETIC TURF INFILL - ROUNDED COLORED SAND - 30-50 Sieve - 50 LB. BAG (UP TO 50 BAGS/PALLET), F.O.B. IL - IL-STI-30-50	REGIONAL PLANT	IL-STI-30-50	50 LB BAG	\$ 21.950	5.0%	\$ 1.098	\$ 20.853	+ shipping - see freight notes	163
164	Other: Bocce Court Surfacing	2	27	PALLET & COVER CHARGES FROM IL PLANT - IL-PALLET	REGIONAL PLANT	IL-PALLET	EACH	\$ 8.000	5.0%	\$ 0.400	\$ 7.600	+ shipping - see freight notes	164
165	Other: Bocce Court Surfacing	2	27	SYNTHETIC TURF INFILL - SUB-ANGULAR COLORED SAND - 20-40 Sieve - 50 LB. BAG (UP TO 50 BAGS/PALLET), F.O.B. IL - IL-STI-20-40	REGIONAL PLANT	IL-STI-20-40	50 LB BAG	\$ 24.950	5.0%	\$ 1.248	\$ 23.703	+ shipping - see freight notes	165
166	Other: Bocce Court Surfacing	2	27	SYNTHETIC TURF INFILL - SUB-ANGULAR COLORED SAND - 16-40 Sieve - 50 LB. BAG (UP TO 50 BAGS/PALLET), F.O.B. IL - IL-STI-16-40	REGIONAL PLANT	IL-STI-16-40	50 LB BAG	\$ 27.950	5.0%	\$ 1.398	\$ 26.553	+ shipping - see freight notes	166
167	Other: Bocce Court Surfacing	2	31	Extra Fine 40/100 mesh									167
168	Other: Bocce Court Surfacing	2	31	STANDARD COLORS—Extra Fine 40/100 mesh (.15-.42mm), predominately 70 mesh (.21mm) 1 Color COLORS: Green, Red, BCM Blue, 787 Blue, Navy, Yellow, OSHA Yellow, Teak, Teal, Blue/Grey, Black, Grey, White, Light Beige, Buff, Tan, Camel, Chocolate, Walnut, Smoke, Peach, F.O.B. IL 50 LB.	REGIONAL PLANT	IL-R40-100S	50 LB BAG	\$ 21.95	5.0%	\$ 1.098	\$ 20.853	+ shipping - see freight notes	168
169	Other: Bocce Court Surfacing	2	31	PREMIUM COLORS—Extra Fine 40/100 mesh (.15-.42mm), predominately 70 mesh (.21mm) 1 Color COLORS: Burgundy, Fiesta Red, Grape, Hunter Green, Light Rose, Orange, Plum	REGIONAL PLANT	IL-R40-100P	50 LB BAG	\$ 25.20	5.0%	\$ 1.260	\$ 23.940	+ shipping - see freight notes	169
170	Other: Bocce Court Surfacing	2	31	BLENDS OF STANDARD COLORS—Extra Fine 40/100 mesh (8 bag minimum)	REGIONAL PLANT	IL-R40-100SB	50 LB BAG	\$ 25.45	5.0%	\$ 1.273	\$ 24.178	+ shipping - see freight notes	170
171	Other: Bocce Court Surfacing	2	31	BLENDS OF PREMIUM COLORS—Extra Fine 40/100 (120 bag minimum, if not in stock)	REGIONAL PLANT	IL-R40-100PB	50 LB BAG	\$ 28.70	5.0%	\$ 1.435	\$ 27.265	+ shipping - see freight notes	171
172	Other: Bocce Court Surfacing	2	31	UV RESISTANT COLOR—STANDARD COLORS—Extra Fine 40/100 mesh (8 bag minimum—1 Color)	REGIONAL PLANT	IL-R40-100SUV	50 LB BAG	\$ 24.45	5.0%	\$ 1.223	\$ 23.228	+ shipping - see freight notes	172

Bidding Company Name:				Partac Peat Corporation		Catalog Name:		2 - Bocce Court Surfacing					No.
No.	Product Category	Beam Clay Catalog Section #	Page#	Product Description	Manufacturer	Vendor SKU	Unit of Measure	Catalog List Price	Bid Discount Percentage	Discount Amt.	Net Effective Bid Price	Comments	No.
173	Other: Bocce Court Surfacing	2	31	UV RESISTANT COLOR—PREMIUM COLORS—Extra Fine 40/100 mesh (120 bag minimum, if not in stock—1 Color)	REGIONAL PLANT	IL-R40-100PUV	50 LB BAG	\$27.70	5.0%	\$ 1.385	\$ 26.315	+ shipping - see freight notes	173
174	Other: Bocce Court Surfacing	2	31	UV RESISTANT COLOR—BLENDS OF STANDARD COLORS—Extra Fine 40/100 mesh (8 bag minimum)	REGIONAL PLANT	IL-R40-100SUVB	50 LB BAG	\$27.95	5.0%	\$ 1.398	\$ 26.553	+ shipping - see freight notes	174
175	Other: Bocce Court Surfacing	2	31	UV RESISTANT COLOR—BLENDS OF PREMIUM COLORS—Extra Fine 40/100 mesh (120 bag minimum, if not in stock)	REGIONAL PLANT	IL-R40-100PUVB	50 LB BAG	\$31.20	5.0%	\$ 1.560	\$ 29.640	+ shipping - see freight notes	175
176	Other: Bocce Court Surfacing	2	31	Fine 30/50 mesh									176
177	Other: Bocce Court Surfacing	2	31	STANDARD COLORS—Fine 30/50 mesh (.3-.6mm), predominately 40 mesh (.42mm) 1 Color COLORS: Green, Red, BCM Blue, 787 Blue, Navy, Yellow, OSHA Yellow, Teak, Teal, Blue/Grey, Black, Grey, White, Light Beige, Buff, Tan, Camel, Chocolate, Walnut, Smoke, Peach, F.O.B. IL 50 LB.	REGIONAL PLANT	IL-R30-50S	50 LB BAG	\$21.95	5.0%	\$ 1.098	\$ 20.853	+ shipping - see freight notes	177
178	Other: Bocce Court Surfacing	2	31	PREMIUM COLORS—Fine 30/50 mesh (.3-.6mm), predominately 40 mesh (.42mm) 1 Color COLORS: Burgundy, Fiesta Red, Grape, Hunter Green, Light Rose, Orange, Plum	REGIONAL PLANT	IL-R30-50P	50 LB BAG	\$25.20	5.0%	\$ 1.260	\$ 23.940	+ shipping - see freight notes	178
179	Other: Bocce Court Surfacing	2	31	BLENDS OF STANDARD COLORS—Fine 30/50 mesh (8 bag minimum)	REGIONAL PLANT	IL-R30-50SB	50 LB BAG	\$25.45	5.0%	\$ 1.273	\$ 24.178	+ shipping - see freight notes	179
180	Other: Bocce Court Surfacing	2	31	BLENDS OF PREMIUM COLORS—Fine 30/50 mesh (120 bag minimum, if not in stock)	REGIONAL PLANT	IL-R30-50PB	50 LB BAG	\$28.70	5.0%	\$ 1.435	\$ 27.265	+ shipping - see freight notes	180
181	Other: Bocce Court Surfacing	2	31	UV RESISTANT COLOR—STANDARD COLORS—Fine 30/50 mesh (8 bag minimum—1 Color)	REGIONAL PLANT	IL-R30-50SUV	50 LB BAG	\$24.45	5.0%	\$ 1.223	\$ 23.228	+ shipping - see freight notes	181
182	Other: Bocce Court Surfacing	2	31	UV RESISTANT COLOR—PREMIUM COLORS—Fine 30/50 mesh (120 bag minimum, if not in stock— 1 Color)	REGIONAL PLANT	IL-R30-50PUV	50 LB BAG	\$27.70	5.0%	\$ 1.385	\$ 26.315	+ shipping - see freight notes	182
183	Other: Bocce Court Surfacing	2	31	UV RESISTANT COLOR—BLENDS OF STANDARD COLORS—Fine 30/50 mesh (8 bag minimum)	REGIONAL PLANT	IL-R30-50SUVB	50 LB BAG	\$27.95	5.0%	\$ 1.398	\$ 26.553	+ shipping - see freight notes	183
184	Other: Bocce Court Surfacing	2	31	UV RESISTANT COLOR—BLENDS OF PREMIUM COLORS—Fine 30/50 mesh (120 bag minimum, if not in stock)	REGIONAL PLANT	IL-R30-50PUVB	50 LB BAG	\$31.20	5.0%	\$ 1.560	\$ 29.640	+ shipping - see freight notes	184
185	Other: Bocce Court Surfacing	2	31	Medium 20/40 mesh									185
186	Other: Bocce Court Surfacing	2	31	STANDARD COLORS—Medium 20/40 mesh (.42-.84mm), predominately 30 mesh (.59mm) 1 Color COLORS: Green, Red, BCM Blue, 787 Blue, Navy, Yellow, OSHA Yellow, Teak, Teal, Blue/Grey, Black, Grey, White, Light Beige, Buff, Tan, Camel, Chocolate, Walnut, Smoke, Peach, F.O.B. IL 50 LB.	REGIONAL PLANT	IL-SA20-40-S	50 LB BAG	\$24.95	5.0%	\$ 1.248	\$ 23.703	+ shipping - see freight notes	186
187	Other: Bocce Court Surfacing	2	31	PREMIUM COLORS—Medium 20/40 mesh (.42-.84mm), predominately 30 mesh (.59mm) 1 Color COLORS: Burgundy, Fiesta Red, Grape, Hunter Green, Light Rose, Orange, Plum	REGIONAL PLANT	IL-SA20-40-P	50 LB BAG	\$28.20	5.0%	\$ 1.410	\$ 26.790	+ shipping - see freight notes	187
188	Other: Bocce Court Surfacing	2	31	BLENDS OF STANDARD COLORS—Medium 20/40 mesh (.42-.84mm), predominately 30 mesh (.59mm) (8 bag minimum)	REGIONAL PLANT	IL-SA20-40SB	50 LB BAG	\$28.45	5.0%	\$ 1.423	\$ 27.028	+ shipping - see freight notes	188
189	Other: Bocce Court Surfacing	2	31	BLENDS OF PREMIUM COLORS—Medium 20/40 mesh (.42-.84mm), predominately 30 mesh (.59mm) (120 bag minimum, if not in stock)	REGIONAL PLANT	IL-SA20-40PB	50 LB BAG	\$31.70	5.0%	\$ 1.585	\$ 30.115	+ shipping - see freight notes	189
190	Other: Bocce Court Surfacing	2	31	UV RESISTANT COLOR—STANDARD COLORS—Medium 20/40 mesh (.42-.84mm), predominately 30 mesh (.59mm) (8 bag minimum—1 Color)	REGIONAL PLANT	IL-SA20-40SUV	50 LB BAG	\$27.45	5.0%	\$ 1.373	\$ 26.078	+ shipping - see freight notes	190
191	Other: Bocce Court Surfacing	2	31	UV RESISTANT COLOR—PREMIUM COLORS—Medium 20/40 mesh (.42-.84mm), predominately 30 mesh (.59mm) (120 bag minimum, if not in stock— 1 Color)	REGIONAL PLANT	IL-SA20-40PUV	50 LB BAG	\$30.70	5.0%	\$ 1.535	\$ 29.165	+ shipping - see freight notes	191
192	Other: Bocce Court Surfacing	2	31	UV RESISTANT COLOR—BLENDS OF STANDARD COLORS—Medium 20/40 mesh (.42-.84mm), predominately 30 mesh (.59mm) (8 bag minimum)	REGIONAL PLANT	IL-SA20-40SUVB	50 LB BAG	\$30.95	5.0%	\$ 1.548	\$ 29.403	+ shipping - see freight notes	192
193	Other: Bocce Court Surfacing	2	31	UV RESISTANT COLOR—BLENDS OF PREMIUM COLORS—Medium 20/40 mesh (.42-.84mm), predominately 30 mesh (.59mm) (120 bag minimum, if not in stock)	REGIONAL PLANT	IL-SA20-40PUVB	50 LB BAG	\$34.20	5.0%	\$ 1.710	\$ 32.490	+ shipping - see freight notes	193
194	Other: Bocce Court Surfacing	2	31	Coarse 9/60 mesh									194
195	Other: Bocce Court Surfacing	2	31	Coarse 9/60 mesh (.25-2mm), predominately 16-30 mesh (.59-1.2mm) Dark Green or Red	REGIONAL PLANT	GAF9-60-C	50 LB BAG	\$13.75	5.0%	\$ 0.688	\$ 13.063	+ shipping - see freight notes	195
196	Other: Bocce Court Surfacing	2	31	Medium Plus 16/40 mesh									196
197	Other: Bocce Court Surfacing	2	31	STANDARD COLORS—Medium Plus 16/40 mesh (.42-1.2mm), predominately 20 mesh (.84mm) 1 Color COLORS: Green, Red, BCM Blue, 787 Blue, Navy, Yellow, OSHA Yellow, Teak, Teal, Blue/Grey, Black, Grey, White, Light Beige, Buff, Tan, Camel, Chocolate, Walnut, Smoke, Peach, F.O.B. IL 50 LB.	REGIONAL PLANT	IL-SA16-40S	50 LB BAG	\$27.95	5.0%	\$ 1.398	\$ 26.553	+ shipping - see freight notes	197
198	Other: Bocce Court Surfacing	2	31	PREMIUM COLORS—Medium Plus 16/40 mesh (.42-1.2mm), predominately 20 mesh (.84mm) 1 Color COLORS: Burgundy, Fiesta Red, Grape, Hunter Green, Light Rose, Orange, Plum	REGIONAL PLANT	IL-SA16-40P	50 LB BAG	\$31.20	5.0%	\$ 1.560	\$ 29.640	+ shipping - see freight notes	198
199	Other: Bocce Court Surfacing	2	31	BLENDS OF STANDARD COLORS—Medium Plus 16/40 mesh (.42-1.2mm), predominately 20 mesh (.84mm) (8 bag minimum)	REGIONAL PLANT	IL-SA16-40SB	50 LB BAG	\$31.45	5.0%	\$ 1.573	\$ 29.878	+ shipping - see freight notes	199
200	Other: Bocce Court Surfacing	2	31	BLENDS OF PREMIUM COLORS—Medium Plus 16/40 mesh (.42-1.2mm), predominately 20 mesh (.84mm) (120 bag minimum, if not in stock)	REGIONAL PLANT	IL-SA16-40PB	50 LB BAG	\$34.70	5.0%	\$ 1.735	\$ 32.965	+ shipping - see freight notes	200
201	Other: Bocce Court Surfacing	2	31	UV RESISTANT COLOR—STANDARD COLORS—Medium Plus 16/40 mesh (.42-1.2mm), predominately 20 mesh (.84mm) (8 bag minimum—1 Color)	REGIONAL PLANT	IL-SA16-40SUV	50 LB BAG	\$30.45	5.0%	\$ 1.523	\$ 28.928	+ shipping - see freight notes	201
202	Other: Bocce Court Surfacing	2	31	UV RESISTANT COLOR—PREMIUM COLORS—Medium Plus 16/40 mesh (.42-1.2mm), predominately 20 mesh (.84mm) (120 bag minimum, if not in stock— 1 Color)	REGIONAL PLANT	IL-SA16-40PUV	50 LB BAG	\$33.70	5.0%	\$ 1.685	\$ 32.015	+ shipping - see freight notes	202
203	Other: Bocce Court Surfacing	2	31	UV RESISTANT COLOR—BLENDS OF STANDARD COLORS—Medium Plus 16/40 mesh (.42-1.2mm), predominately 20 mesh (.84mm) (8 bag minimum)	REGIONAL PLANT	IL-SA16-40SUVB	50 LB BAG	\$33.95	5.0%	\$ 1.698	\$ 32.253	+ shipping - see freight notes	203
204	Other: Bocce Court Surfacing	2	31	UV RESISTANT COLOR—BLENDS OF PREMIUM COLORS—Medium Plus 16/40 mesh (.42-1.2mm), predominately 20 mesh (.84mm) (120 bag minimum, if not in stock)	REGIONAL PLANT	IL-SA16-40PUVB	50 LB BAG	\$37.20	5.0%	\$ 1.860	\$ 35.340	+ shipping - see freight notes	204
205	Other: Bocce Court Surfacing	2	31	Extra-Large 3-4mm									205
206	Other: Bocce Court Surfacing	2	31	STANDARD COLORS—Extra-Large (3-4mm) 1 Color COLORS: Green, Red, BCM Blue, 787 Blue, Navy, Yellow, OSHA Yellow, Teak, Teal, Blue/Grey, Black, Grey, White, Light Beige, Buff, Tan, Camel, Chocolate, Walnut, Smoke, Peach, F.O.B. IL 50 LB.	REGIONAL PLANT	IL-3-4S	50 LB BAG	\$35.95	5.0%	\$ 1.798	\$ 34.153	+ shipping - see freight notes	206
207	Other: Bocce Court Surfacing	2	31	PREMIUM COLORS—Extra-Large (3-4mm) 1 Color COLORS: Burgundy, Fiesta Red, Grape, Hunter Green, Light Rose, Orange, Plum	REGIONAL PLANT	IL-3-4P	50 LB BAG	\$39.20	5.0%	\$ 1.960	\$ 37.240	+ shipping - see freight notes	207

Bidding Company Name:				Partac Peat Corporation	Catalog Name:		2 - Bocce Court Surfacing					No.	
No.	Product Category	Beam Clay Catalog #	Page#	Product Description	Manufacturer	Vendor SKU	Unit of Measure	Catalog List Price	Bid Discount Percentage	Discount Amt.	Net Effective Bid Price	Comments	No.
208	Other: Bocce Court Surfacing	2	31	BLENDS OF STANDARD COLORS—Extra-Large (3-4mm) (8 bag minimum)	REGIONAL PLANT	IL-3-4SB	50 LB BAG	\$39.45	5.0%	\$ 1.973	\$ 37.478	+ shipping - see freight notes	208
209	Other: Bocce Court Surfacing	2	31	BLENDS OF PREMIUM COLORS—Extra-Large (3-4mm) (120 bag minimum, if not in stock)	REGIONAL PLANT	IL-3-4PB	50 LB BAG	\$42.70	5.0%	\$ 2.135	\$ 40.565	+ shipping - see freight notes	209
210	Other: Bocce Court Surfacing	2	31	UV RESISTANT COLOR—STANDARD COLORS—Extra-Large (3-4mm) (8 bag minimum—1 Color)	REGIONAL PLANT	IL-3-4SUV	50 LB BAG	\$38.45	5.0%	\$ 1.923	\$ 36.528	+ shipping - see freight notes	210
211	Other: Bocce Court Surfacing	2	31	UV RESISTANT COLOR—PREMIUM COLORS—Extra-Large (3-4mm) (120 bag minimum, if not in stock—1 Color)	REGIONAL PLANT	IL-3-4PUV	50 LB BAG	\$41.70	5.0%	\$ 2.085	\$ 39.615	+ shipping - see freight notes	211
212	Other: Bocce Court Surfacing	2	31	UV RESISTANT COLOR—BLENDS OF STANDARD COLORS—Extra-Large (3-4mm) (8 bag minimum)	REGIONAL PLANT	IL-3-4SUVB	50 LB BAG	\$41.95	5.0%	\$ 2.098	\$ 39.853	+ shipping - see freight notes	212
213	Other: Bocce Court Surfacing	2	31	UV RESISTANT COLOR—BLENDS OF PREMIUM COLORS—Extra-Large (3-4mm) (120 bag minimum, if not in stock)	REGIONAL PLANT	IL-3-4PUVB	50 LB BAG	\$45.20	5.0%	\$ 2.260	\$ 42.940	+ shipping - see freight notes	213
214	Other: Bocce Court Surfacing	2	31	PALLET & COVER CHARGES FROM IL PLANT - IL-PALLET	REGIONAL PLANT	IL-PALLET	EACH	\$ 8.000	5.0%	\$ 0.400	\$ 7.600	+ shipping - see freight notes	214
215	Other: Bocce Court Surfacing	2	28	SYNTHETIC TURF INFILL - WHITE SUB-ANGULAR SAND - 40-100 Sieve, Dry - 3000 LB. BULK BAG, F.O.B. NJ - R-PLANT - USS-STI-40-100-3000#	REGIONAL PLANT	USS-STI-40-100-3000#	3000 LB BAG	\$ 335.000	5.0%	\$ 16.750	\$ 318.250	+ shipping - see freight notes	215
216	Other: Bocce Court Surfacing	2	28	SYNTHETIC TURF INFILL - WHITE SUB-ANGULAR SAND - 30-50 Sieve, Dry - 3000 LB. BULK BAG, F.O.B. NJ - R-PLANT - USS-STI-30-50-3000#	REGIONAL PLANT	USS-STI-30-50-3000#	3000 LB BAG	\$ 300.000	5.0%	\$ 15.000	\$ 285.000	+ shipping - see freight notes	216
217	Other: Bocce Court Surfacing	2	28	SYNTHETIC TURF INFILL - WHITE SUB-ANGULAR SAND - 18-60 Sieve, Dry - 3000 LB. BULK BAG, F.O.B. NJ - R-PLANT - W-STI18-60-3000#	REGIONAL PLANT	W-STI18-60-3000#	3000 LB BAG	\$ 198.000	5.0%	\$ 9.900	\$ 188.100	+ shipping - see freight notes	217
218	Other: Bocce Court Surfacing	2	28	SYNTHETIC TURF INFILL - WHITE SUB-ANGULAR SAND - 18-100 Sieve, Dry - 3000 LB. BULK BAG, F.O.B. NJ - R-PLANT - W-STI-18-100-3000#	REGIONAL PLANT	W-STI-18-100-3000#	3000 LB BAG	\$ 175.000	5.0%	\$ 8.750	\$ 166.250	+ shipping - see freight notes	218
219	Other: Bocce Court Surfacing	2	28	SYNTHETIC TURF INFILL - WHITE SUB-ANGULAR SAND - 35-70 Sieve, Dry - 3000 LB. BULK BAG, F.O.B. NJ - R-PLANT - W-STI-35-70-3000#	REGIONAL PLANT	W-STI-35-70-3000#	3000 LB BAG	\$ 190.000	5.0%	\$ 9.500	\$ 180.500	+ shipping - see freight notes	219
220	Other: Bocce Court Surfacing	2	28	SYNTHETIC TURF INFILL - WHITE SUB-ANGULAR SAND - 35-100 Sieve, Dry - 3000 LB. BULK BAG, F.O.B. NJ - R-PLANT - W-STI-35-100-3000#	REGIONAL PLANT	W-STI-35-100-3000#	3000 LB BAG	\$ 170.000	5.0%	\$ 8.500	\$ 161.500	+ shipping - see freight notes	220
221	Other: Bocce Court Surfacing	2	28	FROM R-PLANT: 30 (100 LB.) BAGS/PALLET, 60 (50 LB.) BAGS/PALLET, 1 (3,000 LB.) BAG/PALLET - PALLET & COVER CHARGE - RP-PALLET	REGIONAL PLANT	RP-PALLET	EACH	\$ 10.500	5.0%	\$ 0.525	\$ 9.975	+ shipping - see freight notes	221
222	Other: Bocce Court Surfacing	2	28	SYNTHETIC TURF INFILL - WHITE SUB-ANGULAR SAND - 40-100 Sieve, Dry - BULK, F.O.B. NJ - R-PLANT - USS-STI-40-100-BULK	REGIONAL PLANT	USS-STI-40-100-BULK	TON	\$ 88.000	5.0%	\$ 4.400	\$ 83.600	+ shipping - see freight notes	222
223	Other: Bocce Court Surfacing	2	28	SYNTHETIC TURF INFILL - WHITE SUB-ANGULAR SAND - 30-50 Sieve, Dry - BULK, F.O.B. NJ - R-PLANT - USS-STI-30-50-BULK	REGIONAL PLANT	USS-STI-30-50-BULK	TON	\$ 85.000	5.0%	\$ 4.250	\$ 80.750	+ shipping - see freight notes	223
224	Other: Bocce Court Surfacing	2	28	SYNTHETIC TURF INFILL - WHITE SUB-ANGULAR SAND - 20-40 Sieve, Dry - BULK, F.O.B. NJ - R-PLANT - USS-STI-20-40-3000#	REGIONAL PLANT	USS-STI-20-40-3000#	3000 LB. BAG	\$ 310.000	5.0%	\$ 15.500	\$ 294.500	+ shipping - see freight notes	224
225	Other: Bocce Court Surfacing	2	28	SYNTHETIC TURF INFILL - WHITE SUB-ANGULAR SAND - 20-40 Sieve, Dry - BULK, F.O.B. NJ - R-PLANT - USS-STI-20-40-BULK	REGIONAL PLANT	USS-STI-20-40-BULK	TON	\$ 90.000	5.0%	\$ 4.500	\$ 85.500	+ shipping - see freight notes	225
226	Other: Bocce Court Surfacing	2	28	SYNTHETIC TURF INFILL - WHITE SUB-ANGULAR SAND - 16-30 Sieve, Dry - BULK, F.O.B. NJ - R-PLANT - USS-STI-16-30-3000#	REGIONAL PLANT	USS-STI-16-30-3000#	3000 LB. BAG	\$ 415.000	5.0%	\$ 20.750	\$ 394.250	+ shipping - see freight notes	226
227	Other: Bocce Court Surfacing	2	28	SYNTHETIC TURF INFILL - WHITE SUB-ANGULAR SAND - 16-30 Sieve, Dry - BULK, F.O.B. NJ - R-PLANT - USS-STI-16-30-BULK	REGIONAL PLANT	USS-STI-16-30-BULK	TON	\$ 100.000	5.0%	\$ 5.000	\$ 95.000	+ shipping - see freight notes	227
228	Other: Bocce Court Surfacing	2	28	SYNTHETIC TURF INFILL - WHITE SUB-ANGULAR SAND - 18-60 Sieve, Dry - BULK, F.O.B. NJ - R-PLANT - W-STI-18-60 BULK	REGIONAL PLANT	W-STI-18-60 BULK	TON	\$ 70.000	5.0%	\$ 3.500	\$ 66.500	+ shipping - see freight notes	228
229	Other: Bocce Court Surfacing	2	28	SYNTHETIC TURF INFILL - WHITE SUB-ANGULAR SAND - 18-100 Sieve, Dry - BULK, F.O.B. NJ - R-PLANT - W-STI-18-100 BULK	REGIONAL PLANT	W-STI-18-100 BULK	TON	\$ 65.000	5.0%	\$ 3.250	\$ 61.750	+ shipping - see freight notes	229
230	Other: Bocce Court Surfacing	2	28	SYNTHETIC TURF INFILL - WHITE SUB-ANGULAR SAND - 35-70 Sieve, Dry - BULK, F.O.B. NJ - R-PLANT - W-STI-35-70 BULK	REGIONAL PLANT	W-STI-35-70 BULK	TON	\$ 70.000	5.0%	\$ 3.500	\$ 66.500	+ shipping - see freight notes	230
231	Other: Bocce Court Surfacing	2	28	SYNTHETIC TURF INFILL - WHITE SUB-ANGULAR SAND - 35-100 Sieve, Dry - BULK, F.O.B. NJ - R-PLANT - W-STI-35-100 BULK	REGIONAL PLANT	W-STI-35-100 BULK	TON	\$ 50.000	5.0%	\$ 2.500	\$ 47.500	+ shipping - see freight notes	231
232	Other: Bocce Court Surfacing	2	28	SYNTHETIC TURF INFILL - WHITE SUB-ANGULAR SAND—WASHED—NOT COLORED—Approx. 85% between .25mm and 1mm, 100% passing 2mm - SAND B, NOT HEAT-TREATED, 50 LB. BAGS (UP TO 50/PALLET), F.O.B. NJ - STI-SANDB-BAG	REGIONAL PLANT	STI-SANDB-BAG	50 LB BAG	\$ 5.250	5.0%	\$ 0.263	\$ 4.988	+ shipping - see freight notes	232
233	Other: Bocce Court Surfacing	2	28	SYNTHETIC TURF INFILL - WHITE SUB-ANGULAR SAND—WASHED—NOT COLORED—Approx. 85% between .25mm and 1mm, 100% passing 2mm - SAND B, HEAT-TREATED, 50 LB. BAGS (UP TO 50/PALLET), F.O.B. NJ - STI-SANDB-HT-BAG	REGIONAL PLANT	STI-SANDB-HT-BAG	50 LB BAG	\$ 5.500	5.0%	\$ 0.275	\$ 5.225	+ shipping - see freight notes	233
234	Other: Bocce Court Surfacing	2	28	PALLET & COVER CHARGE \$6.50, F.O. B. NJ - NJ-PALLET	REGIONAL PLANT	NJ-PALLET	EACH	\$ 6.500	5.0%	\$ 0.325	\$ 6.175	+ shipping - see freight notes	234
235	Other: Bocce Court Surfacing	2	28	SYNTHETIC TURF INFILL - WHITE SUB-ANGULAR SAND—WASHED—NOT COLORED—Approx. 85% between .25mm and 1mm, 100% passing 2mm - SAND B, NOT HEAT-TREATED - BULK, F.O.B. NJ - STI-SANDB-BULK	REGIONAL PLANT	STI-SANDB-BULK	TON	\$ 48.000	5.0%	\$ 2.400	\$ 45.600	+ shipping - see freight notes	235
236	Other: Bocce Court Surfacing	2	28	SYNTHETIC TURF INFILL - WHITE SUB-ANGULAR SAND—WASHED—NOT COLORED—Approx. 85% between .25mm and 1mm, 100% passing 2mm - SAND B, HEAT-TREATED - BULK, F.O.B. NJ - STI-SANDB-HT-BULK	REGIONAL PLANT	STI-SANDB-HT-BULK	TON	\$ 69.000	5.0%	\$ 3.450	\$ 65.550	+ shipping - see freight notes	236
237	Other: Bocce Court Surfacing	2	28	SYNTHETIC TURF INFILL - BLACK CRUMB RUBBER - 10-20 Mesh, 50 LB. BAG, F.O.B. GA - STI-BCR-10-20-50	REGIONAL PLANT	STI-BCR-10-20-50	50 LB BAG	\$ 28.000	5.0%	\$ 1.400	\$ 26.600	+ shipping - see freight notes	237
238	Other: Bocce Court Surfacing	2	28	SYNTHETIC TURF INFILL - BLACK CRUMB RUBBER - 6-10 Mesh, 40 LB. BAG, F.O.B. NJ - STI-BCR-6-10-40	REGIONAL PLANT	STI-BCR-6-10-40	40 LB BAG	\$ 10.500	5.0%	\$ 0.525	\$ 9.975	+ shipping - see freight notes	238
239	Other: Bocce Court Surfacing	2	28	SYNTHETIC TURF INFILL - BLACK CRUMB RUBBER - 10-20 Mesh, 40 LB. BAG, F.O.B. NJ - STI-BCR-10-20-40	REGIONAL PLANT	STI-BCR-10-20-40	40 LB BAG	\$ 11.500	5.0%	\$ 0.575	\$ 10.925	+ shipping - see freight notes	239
240	Other: Bocce Court Surfacing	2	28	SYNTHETIC TURF INFILL - BLACK CRUMB RUBBER - 6-10 Mesh, 2000 LB. BAG, F.O.B. NJ - STI-BCR-6-10-BB	REGIONAL PLANT	STI-BCR-6-10-BB	2000 LB BAG	\$ 525.000	5.0%	\$ 26.250	\$ 498.750	+ shipping - see freight notes	240
241	Other: Bocce Court Surfacing	2	28	SYNTHETIC TURF INFILL - BLACK CRUMB RUBBER - 10-20 Mesh, 2000 LB. BAG, F.O.B. NJ - STI-BCR-10-20-BB	REGIONAL PLANT	STI-BCR-10-20-BB	2000 LB BAG	\$ 575.000	5.0%	\$ 28.750	\$ 546.250	+ shipping - see freight notes	241
242	Other: Bocce Court Surfacing	2	28	SYNTHETIC TURF INFILL - CLEAN 3/16" RED LAVA (for red synthetic turf), F.O.B. NJ - 50 LB. BAG (approx. .85 cu.ft.) up to 40 bags/pallet - STI-CLNLAVA-BAG	REGIONAL PLANT	STI-CLNLAVA-BAG	50 LB BAG	\$ 12.500	5.0%	\$ 0.625	\$ 11.875	+ shipping - see freight notes	242

Bidding Company Name:				Partac Peat Corporation		Catalog Name:		2 - Bocce Court Surfacing					No.
No.	Product Category	Item Catalog #	Page#	Product Description	Manufacturer	Vendor SKU	Unit of Measure	Catalog List Price	Bid Discount Percentage	Discount Amt.	Net Effective Bid Price	Comments	No.
243	Other: Bocce Court Surfacing	2	28	SYNTHETIC TURF INFILL - CLEAN 3/16" RED LAVA (for red synthetic turf), F.O.B. NJ - One-Ton Bulk Bags - STI-CLNLAVA-BB	REGIONAL PLANT	STI-CLNLAVA-BB	2000 LB BAG	\$ 455.000	5.0%	\$ 22.750	\$ 432.250	+ shipping - see freight notes	243
244	Other: Bocce Court Surfacing	2	32	SYNTHETIC TURF CLEANERS, PvoVet Turf Care for cleaning turf outdoors, F.O.B. GA - four 1 gallon containers/case - STC-PVTC-4	Sporturf	STC-PVTC-4	EACH	\$ 120.000	5.0%	\$ 6.000	\$ 114.000	+ shipping - see freight notes	244
245	Other: Bocce Court Surfacing	2	321	SYNTHETIC TURF CLEANERS, PvoVet Turf Care for cleaning turf outdoors, F.O.B. GA - Kit - two 1/2 gallon containers with one pump sprayer - STC-PVTCK	Sporturf	STC-PVTCK	KIT	\$ 150.000	5.0%	\$ 7.500	\$ 142.500	+ shipping - see freight notes	245
246	Other: Bocce Court Surfacing	2	32	SYNTHETIC TURF CLEANERS, PvoVet Turf Care for cleaning turf outdoors, F.O.B. GA - ProGienics for cleaning indoor turf (four 1 gallon containers/case) - STC-PVTCIN	Sporturf	STC-PVTCIN	EACH	\$ 135.000	5.0%	\$ 6.750	\$ 128.250	+ shipping - see freight notes	246
247		2	32	SYNTHETIC TURF CLEANERS, PvoVet Turf Care for cleaning turf outdoors, F.O.B. GA - One 5-gallon container - STC-PVTCIN5G	Sporturf	STC-PVTCIN5G	EACH	\$ 160.000	5.0%	\$ 8.000	\$ 152.000	+ shipping - see freight notes	247
248	Other: Bocce Court Surfacing	2	32	Velcro Option F.O.B. GA - Velcro going the full length of rows on both sides--foam backed turf only @ an additional cost to the turf cost - ST-VSO	Sporturf	ST-VSO	SF	\$ 0.750	5.0%	\$ 0.038	\$ 0.713	+ shipping - see freight notes	248
249	Other: Bocce Court Surfacing	2	32	Foam Pads for Playgrounds, perforated, F.O.B. GA - 1" thick, 4' x 5' - ST-FP145	Sporturf	ST-FP145	EACH	\$ 0.480	5.0%	\$ 0.024	\$ 0.456	+ shipping - see freight notes	249
250	Other: Bocce Court Surfacing	2	32	Foam Pads for Playgrounds, perforated, F.O.B. GA - 2" thick, 4' x 5' - ST-FP245	Sporturf	ST-FP245	EACH	\$ 55.000	5.0%	\$ 2.750	\$ 52.250	+ shipping - see freight notes	250
251	Other: Bocce Court Surfacing	2	32	SYNTHETIC TURF TAPE, F.O.B. GA - Tape for seams, 12" wide - by the Linear Foot - ST-TAPELF	REGIONAL PLANT	ST-TAPELF	LF	\$ 1.000	5.0%	\$ 0.050	\$ 0.950	+ shipping - see freight notes	251
252	Other: Bocce Court Surfacing	2	32	SYNTHETIC TURF TAPE, F.O.B. GA - Tape for seams, 12" wide - 200' Roll - ST-TAPEROLL	REGIONAL PLANT	ST-TAPEROLL	ROLL	\$ 145.000	5.0%	\$ 7.250	\$ 137.750	+ shipping - see freight notes	252
253	Other: Bocce Court Surfacing	2	32	SYNTHETIC TURF GLUE F.O.B. GA - Turf Claw Adhesive, 5 Gallon Bucket for polyurethane backed turf - STG-TCA5PBT	Sporturf	STG-TCA5PBT	EACH	\$ 395.000	5.0%	\$ 19.750	\$ 375.250	+ shipping - see freight notes	253
254		2	32	SYNTHETIC TURF GLUE F.O.B. GA - Turf Claw Adhesive, 28 oz. tube - STG-TCATUBE	Sporturf	STG-TCATUBE	EACH	\$ 49.000	5.0%	\$ 2.450	\$ 46.550	+ shipping - see freight notes	254
255	Other: Bocce Court Surfacing	2	32	SYNTHETIC TURF GLUE F.O.B. GA - Turf Claw Adhesive, 4 Gallon Bucket for foam backed turf - STG-TCA4FBT	Sporturf	STG-TCA4FBT	EACH	\$ 150.000	5.0%	\$ 7.500	\$ 142.500	+ shipping - see freight notes	255
256	Other: Bocce Court Surfacing	2	33	SPORT BOCCÉ SET #SB1 - Set comes with 8 solid 100mm bocce balls, yellow jack ball, rulebook and nylon carry bag	St.Pierre	SB1	SET	\$ 67.950	5.0%	\$ 3.398	\$ 64.553	+ shipping - see freight notes	256
257	Other: Bocce Court Surfacing	2	33	TOURNAMENT BOCCÉ SET #PB1 - Set includes 8 - 107mm thermo-set composite resin balls, yellow jack ball, official rulebook, nylon carry bag	St.Pierre	PB1	SET	\$ 87.950	5.0%	\$ 4.398	\$ 83.553	+ shipping - see freight notes	257
258	Other: Bocce Court Surfacing	2	33	TOURNAMENT BOCCÉ SET #TB1 - Set includes 8 - 107mm thermo-set composite resin balls, yellow jack ball, rulebook with court layout and dimensions, zippered nylon tote storage bag	St.Pierre	TB1	SET	\$ 119.950	5.0%	\$ 5.998	\$ 113.953	+ shipping - see freight notes	258
259	Other: Bocce Court Surfacing	2	33	TOURNAMENT BOCCÉ SET - MAHOGANY CASE #TB2 - Set includes 8 - 107mm thermo-set composite resin balls, yellow jack ball, rulebook with court layout and dimensions, comes in mahogany stained pine carrying case with built in handle and burnt in logo.	St.Pierre	TB2	SET	\$ 139.950	5.0%	\$ 6.998	\$ 132.953	+ shipping - see freight notes	259